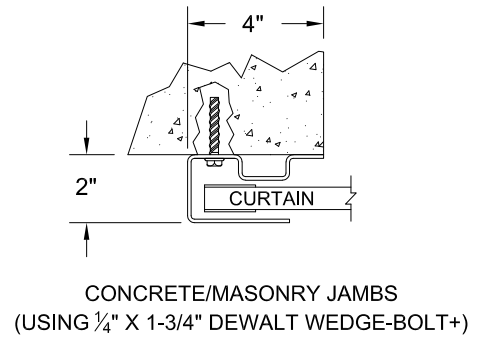
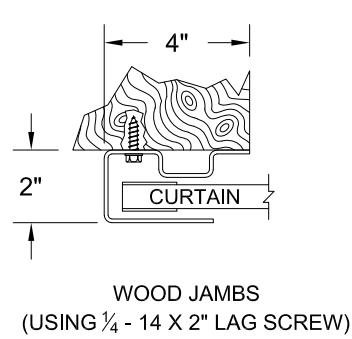
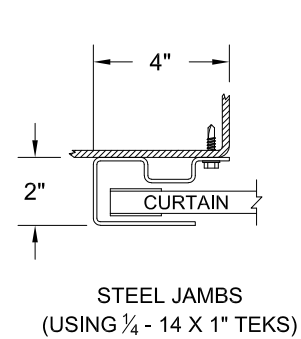
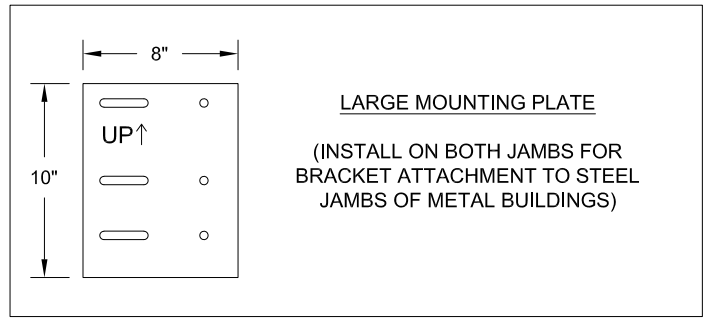
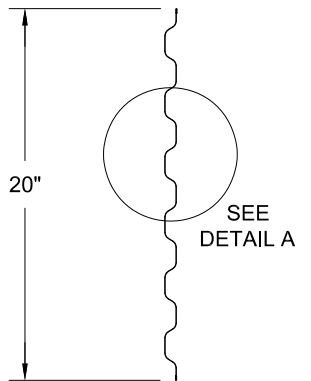
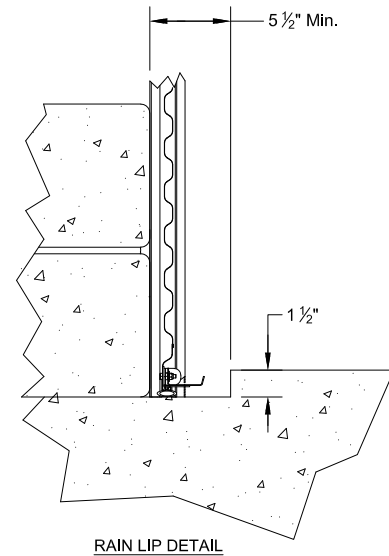


1. OPERATION TYPE MAY BE PUSH-UP, HAND CHAIN OR ELECTRIC.
2. FOR CRITICAL FITS DUE TO REDUCED AVAILABLE HEADROOM OR SIDEROOM CLEARANCES, CONSULT FACTORY.  
  
THE AXLE CAN BE "TRIMMED" TO ACCOMMODATE LOW SIDEROOM.
4. CLEARANCES SHOWN ARE MAXIMUMS. LESSER CLEARANCES MAY BE POSSIBLE.
5. UNLESS OTHERWISE NOTED, DOORS SHALL BE PROVIDED WITH SLIDE LOCKS AT EACH END OF BOTTOM BAR, ENGAGING GUIDES IN THE LOCKED POSITION.
6. ALL OPENING PREPARATION, ELECTRICAL POWER AND FIELD PAINTING SHALL BE PROVIDED BY OTHERS.
7. SERIES 2500I IS AN INSULATED SERIES 2500.
8. CURTAIN FINISH SHALL BE SILICONE POLYESTER PRE-PAINT OVER GALVANIZED GRADE 80 STEEL.
9. GUIDES, BRACKETS, BOTTOM BAR ANGLE AND HEAD STOPS ARE ZINC COATED.
10. VISION PANELS ARE AVAILABLE.
11. MAXIMUM OPENING SIZE: 18'-0" X 18'-0"
12. RAIN LIP CLEARANCE DIMENSION OUTSIDE OF GUIDE = 6" MINIMUM
13. 36" MAX HOLE SPACING.



**DETAIL A**

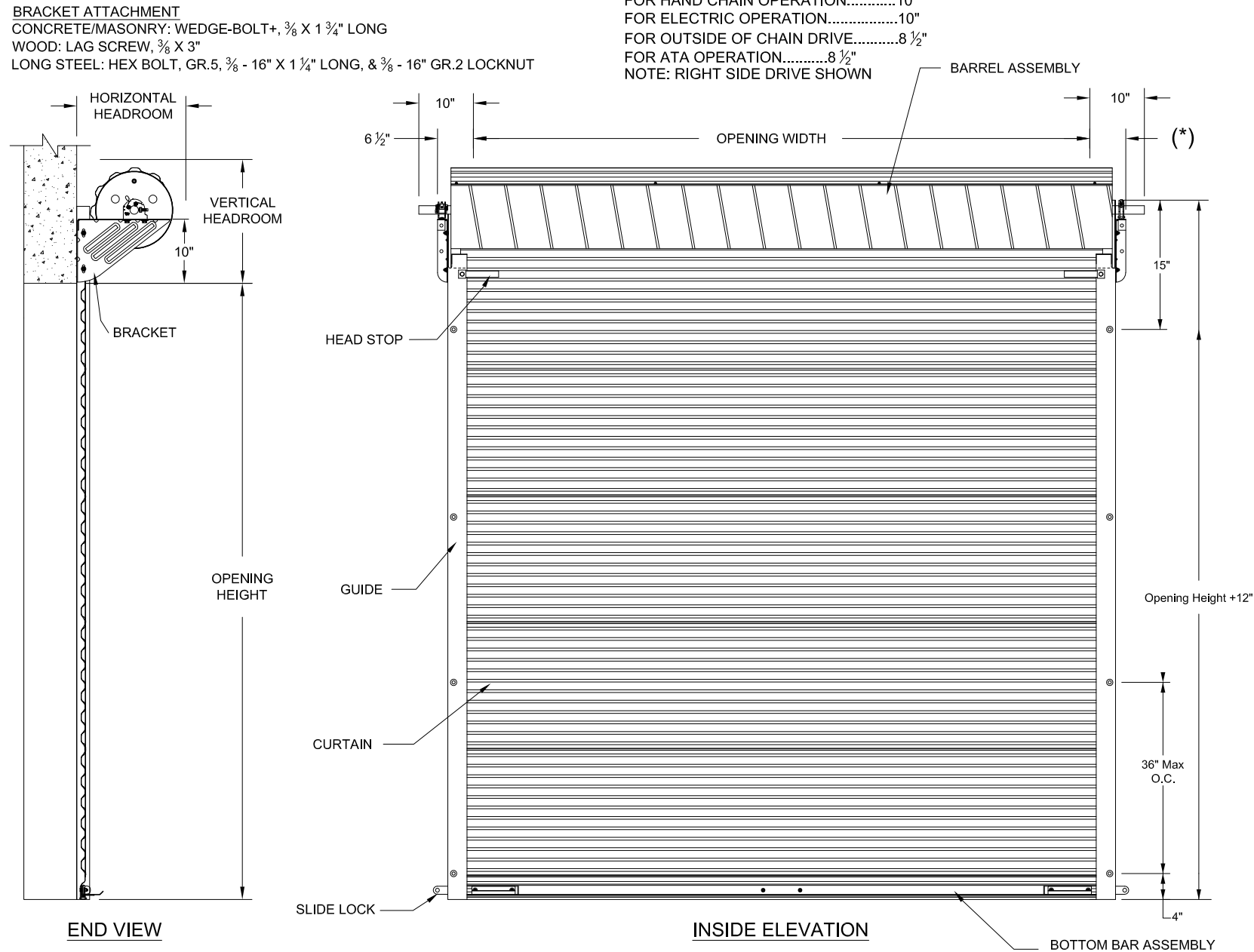
OPENING HEIGHT	VERTICAL HEADROOM	HORIZONTAL HEADROOM
THRU 8'-0"	20"	20"
OVER 8'-0" THRU 10'-0"	21"	21"
OVER 10'-0" THRU 14'-0"	21 ½"	21"
OVER 14'-0" THRU 16'-0"	22"	21"
OVER 16'-0" THRU 18'-0"	22"	22"



**Diagram of the Bottom Bar Assembly:**

- ASTRAGAL:** The vertical component at the bottom of the door frame.
- SLIDE LOCK:** The locking mechanism on the door edge.
- STEP PLATE:** The horizontal plate at the bottom of the door.
- ANGLE:** The L-shaped component supporting the step plate.

**BOTTOM BAR ASSEMBLY**



A.K.12/30/2024

CUSTOMER NUMBER:			DATE:	
CUSTOMER NAME:			CONTACT:	
PROJECT NAME:				
PROJECT LOCATION:				
PLANT:			SALESPERSON:	
DRAWN BY:			DATE:	JANUS INTERNATIONAL GROUP, LLC. 135 JANUS INTERNATIONAL BLVD. TEMPLE, GA 30179-4435 770-562-2850 FAX: 770-562-2264
DRAWING NUMBER:	SHT:	OF:		