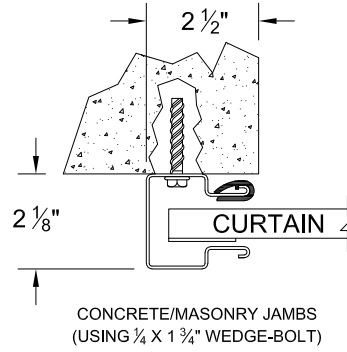
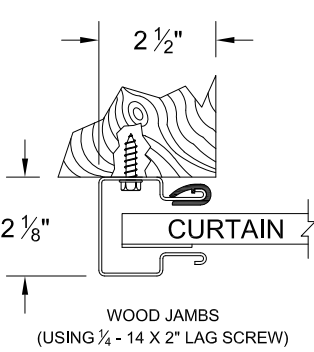
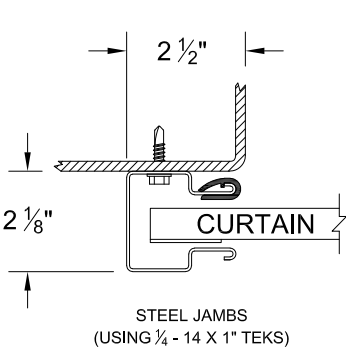
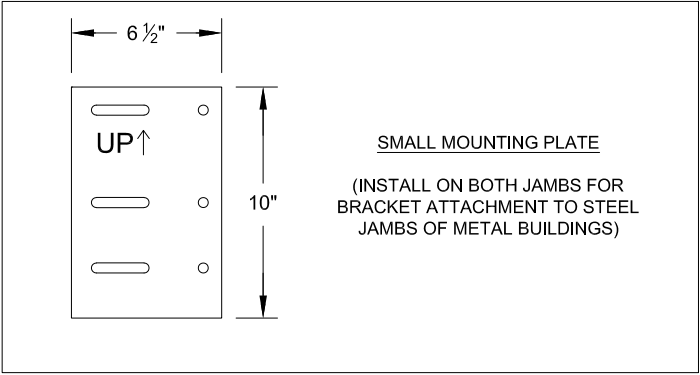


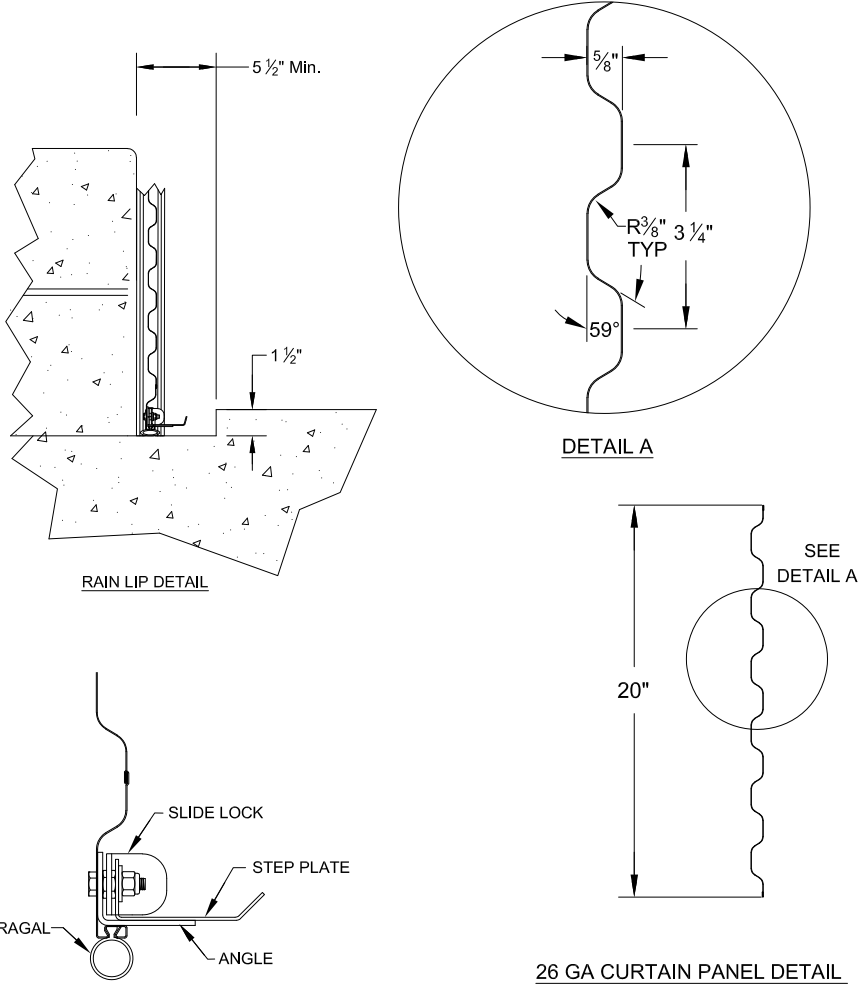
- NOTES:
- 1. OPERATION TYPE MAY BE PUSH-UP, HAND CHAIN OR ELECTRIC.
  - 2. FOR CRITICAL FITS DUE TO REDUCED AVAILABLE HEADROOM OR SIDEROOM CLEARANCES, CONSULT FACTORY.
  - 3. THE AXLE CAN BE "TRIMMED" TO ACCOMMODATE LOW SIDEROOM.
  - 4. CLEARANCES SHOWN ARE MAXIMUMS. LESSER CLEARANCES MAY BE POSSIBLE.
  - 5. UNLESS OTHERWISE NOTED, DOORS SHALL BE PROVIDED WITH SLIDE LOCKS AT EACH END OF BOTTOM BAR, ENGAGING GUIDES IN THE LOCKED POSITION.
  - 6. ALL OPENING PREPARATION, ELECTRICAL POWER AND FIELD PAINTING SHALL BE PROVIDED BY OTHERS.
  - 7. SERIES 2000I IS AN INSULATED SERIES 2000.
  - 8. CURTAIN FINISH SHALL BE SILICONE POLYESTER PRE-PAINT OVER GALVANIZED GRADE 80 STEEL.
  - 9. GUIDES, BRACKETS, BOTTOM BAR ANGLE AND HEAD STOPS ARE ZINC COATED.
  - 10. VISION PANELS ARE AVAILABLE.
  - 11. MAXIMUM OPENING SIZE: 12'-0" X 18'-0".
  - 12. RAIN LIP CLEARANCE DIMENSION OUTSIDE OF GUIDE = 4-1/2" MINIMUM.
  - 13. 36" MAX HOLE SPACING.

BRACKET ATTACHMENT  
CONCRETE/MASONRY: WEDGE-BOLT+, 3/8" X 1 3/4" LONG  
WOOD: LAG SCREW, 3/8" X 3" LONG  
STEEL: HEX BOLT, GR.5, 3/8" - 16 X 1 1/4" LONG, & 3/8" - 16 GR.2 LOCKNUT

(\*) FOR PUSH-UP OPERATION.....4 1/2"  
FOR HAND CHAIN OPERATION.....5"  
FOR ELECTRIC OPERATION.....6"  
FOR OUTSIDE OF CHAIN DRIVE.....6 1/2"  
FOR ATA OPERATION.....6 3/4"  
NOTE: RIGHT SIDE DRIVE SHOWN

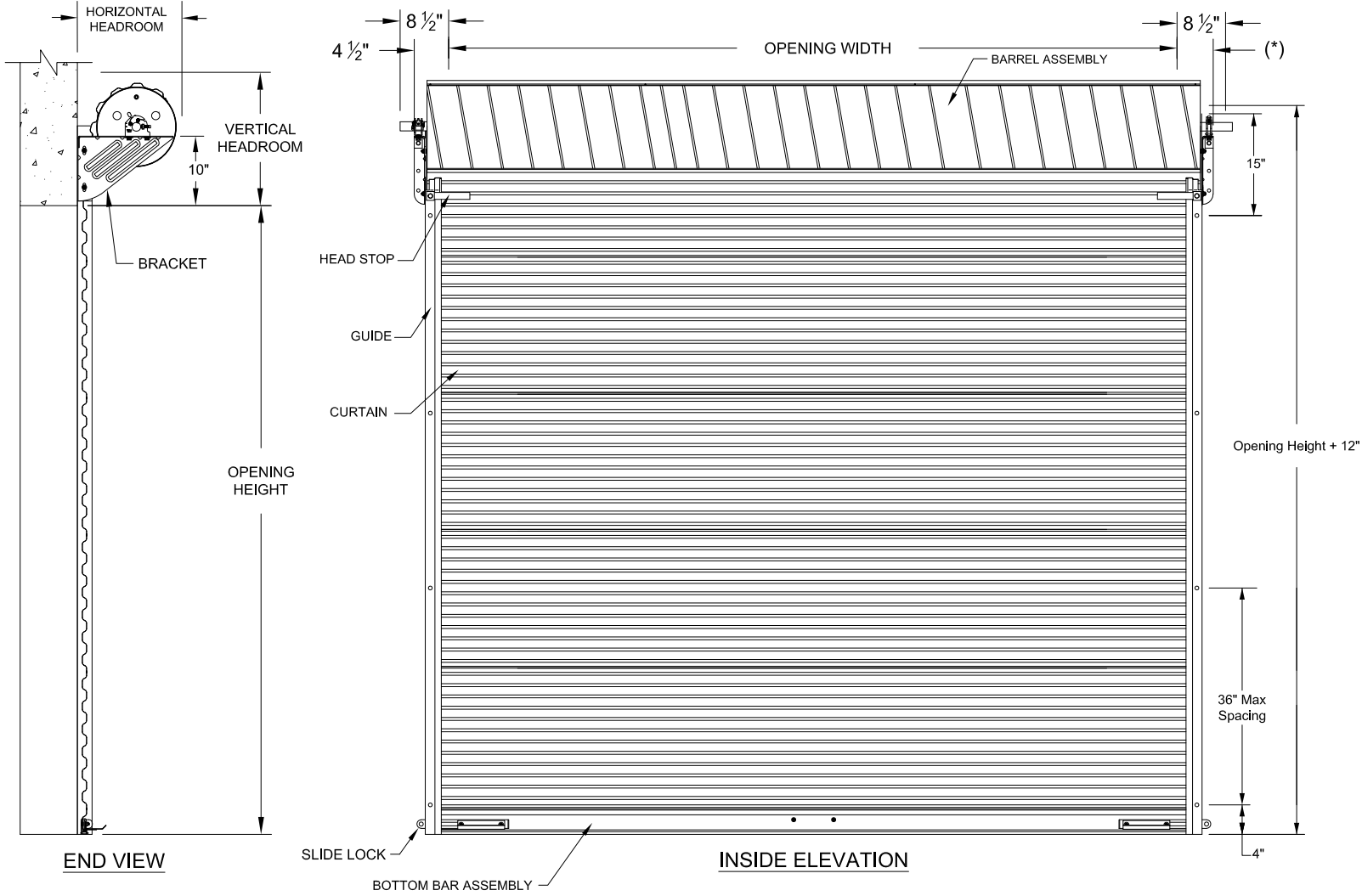


16 GA GUIDE MOUNTING DETAIL



HEADROOM REQUIRED

| OPENING HEIGHT          | VERTICAL HEADROOM | HORIZONTAL HEADROOM |
|-------------------------|-------------------|---------------------|
| THRU 8'-0"              | 20"               | 20"                 |
| OVER 8'-0" THRU 10'-0"  | 21"               | 21"                 |
| OVER 10'-0" THRU 14'-0" | 21 1/2"           | 21"                 |
| OVER 14'-0" THRU 16'-0" | 22"               | 21"                 |
| OVER 16'-0" THRU 18'-0" | 22"               | 22"                 |



| FACTORY ORDER NUMBER | DOOR SERIES |       | QTY | OPENING SIZE |        | JAMB TYPE |           |      | OUTSIDE CURTAIN COLOR | OPERATION |               |          | OPERATION HAND | WEATHERSTRIP |        |      | ADDED OPTIONS |
|----------------------|-------------|-------|-----|--------------|--------|-----------|-----------|------|-----------------------|-----------|---------------|----------|----------------|--------------|--------|------|---------------|
|                      | 2000        | 2000I |     | WIDTH        | HEIGHT | STEEL     | CONC./MAS | WOOD |                       | PUSH UP   | REDUCED CHAIN | ELECTRIC |                | TOP          | HEADER | SIDE |               |
|                      |             |       |     |              |        |           |           |      |                       |           |               |          |                |              |        |      |               |
|                      |             |       |     |              |        |           |           |      |                       |           |               |          |                |              |        |      |               |
|                      |             |       |     |              |        |           |           |      |                       |           |               |          |                |              |        |      |               |

DRAWING #: 814007-0000A.K. 12/18/2024

COMMERCIAL DOOR SERIES: 2000/2000I

|   |  |              |     |
|---|--|--------------|-----|
| CUSTOMER NUMBER:  |  | DATE:        |     |
| CUSTOMER NAME:  |  | CONTACT:     |     |
| PROJECT NAME:   |  |              |     |
| PROJECT LOCATION:   |  |              |     |
| PLANT:  |  | SALESPERSON: |     |
| DRAWN BY:   |  | DATE:        |     |
| DRAWING NUMBER:   |  | SHT:         | OF: |
| JANUS INTERNATIONAL GROUP, LLC.<br>135 JANUS INTERNATIONAL BLVD.<br>TEMPLE, GA 30179-4435<br>770-562-2850 FAX: 770-562-2264 |  |              |     |