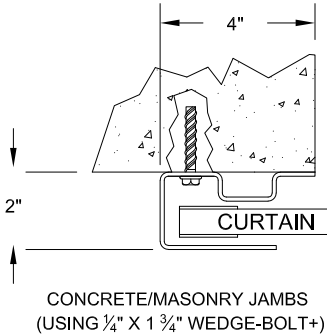
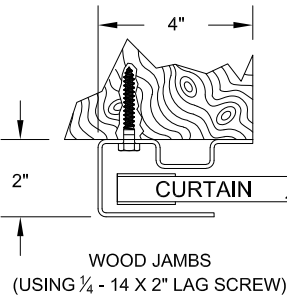
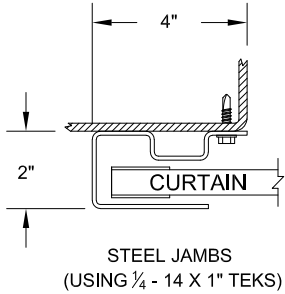
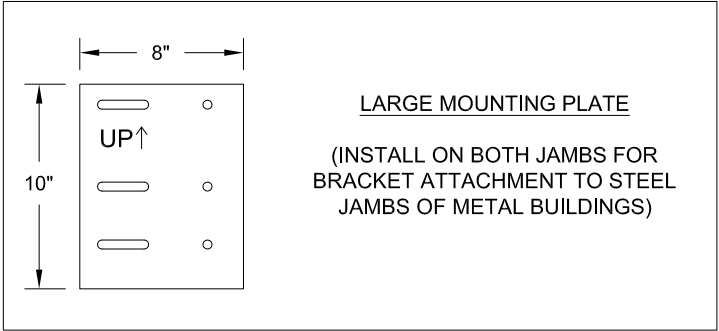


NOTES:

1. OPERATION TYPE MAY BE PUSH-UP, HAND CHAIN OR ELECTRIC.
2. FOR CRITICAL FITS DUE TO REDUCED AVAILABLE HEADROOM OR SIDEROOM CLEARANCES, CONSULT FACTORY.
3. CLEARANCES SHOWN ARE MAXIMUMS. LESSER CLEARANCES MAY BE POSSIBLE.
4. UNLESS OTHERWISE NOTED, DOORS SHALL BE PROVIDED WITH SLIDE LOCKS AT EACH END OF BOTTOM BAR, ENGAGING GUIDES IN THE LOCKED POSITION.
5. ALL OPENING PREPARATION, ELECTRICAL POWER AND FIELD PAINTING SHALL BE PROVIDED BY OTHERS.
6. SERIES 1950HDI IS AN INSULATED SERIES 1950HD.
7. CURTAIN FINISH SHALL BE SILICONE POLYESTER PRE-PAINT OVER GALVANIZED GRADE 80 STEEL.
8. GUIDES, BRACKETS, BOTTOM BAR ANGLE AND HEAD STOPS ARE ZINC COATED.
9. MAXIMUM OPENING SIZE: 12'-0" X 14'-0".
10. RAIN LIP CLEARANCE DIMENSION OUTSIDE OF GUIDE = 6" MINIMUM

BRACKET ATTACHMENT
CONCRETE/MASONRY: WEDGE-BOLT+, 3/8" X 1 3/4" LONG
WOOD: LAG SCREW, 3/8" X 3" LONG
STEEL: HEX BOLT, GR.5, 3/8" - 16 X 1 1/4" LONG, & 3/8" - 16 GR.2 LOCKNUT

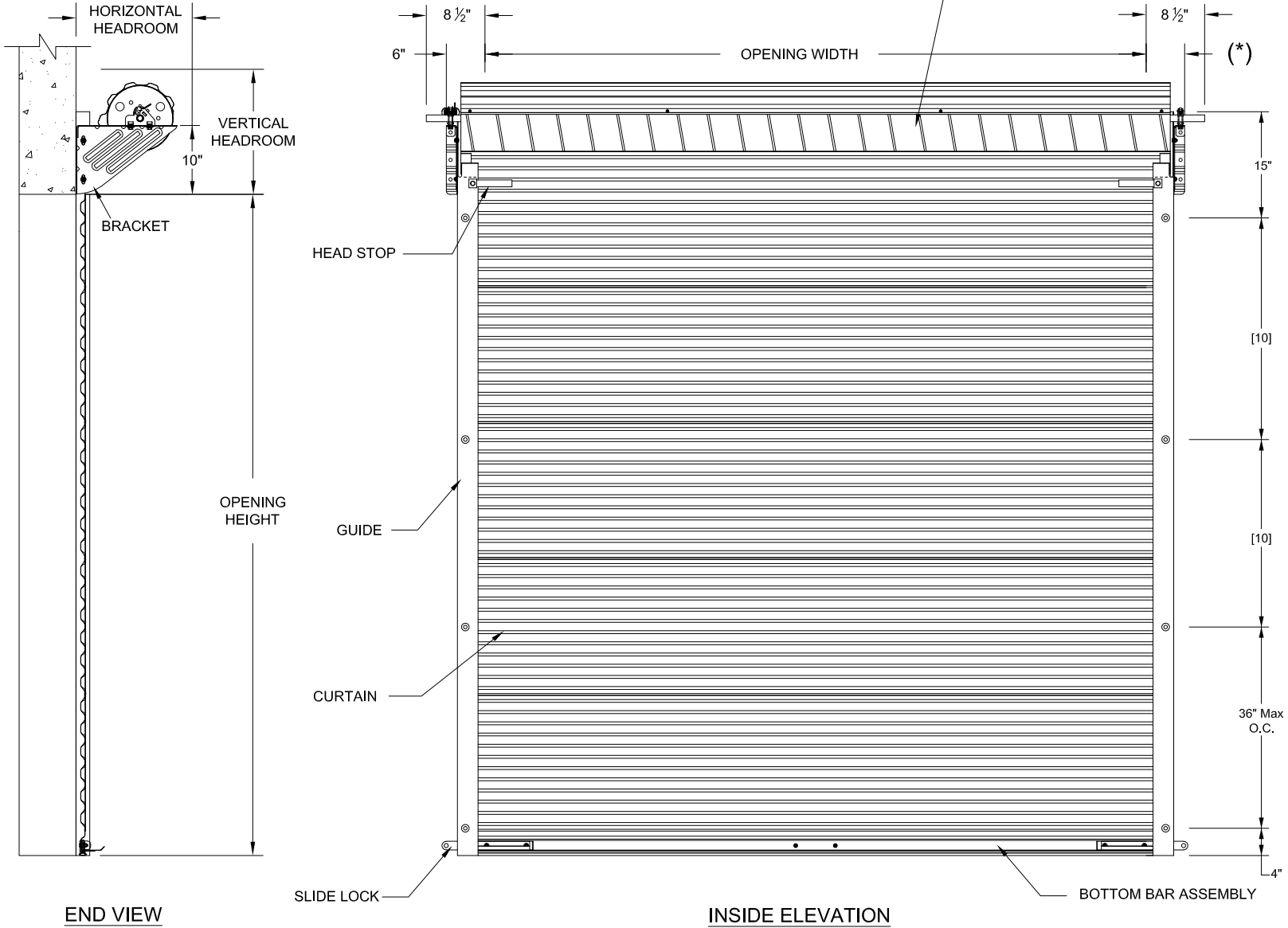
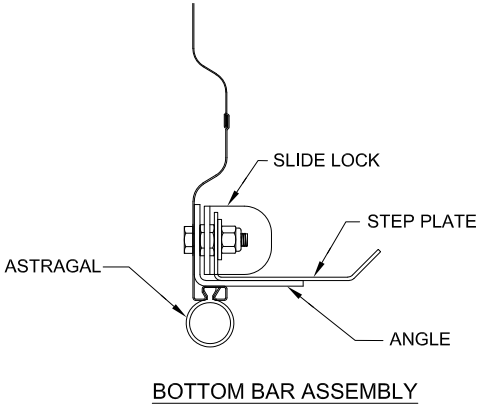
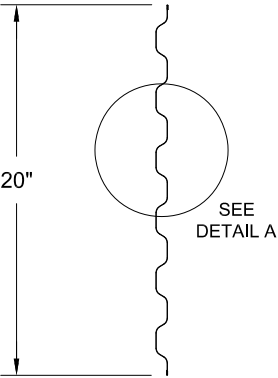
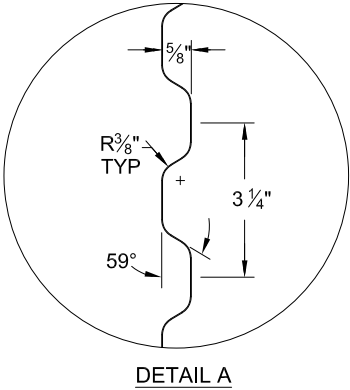
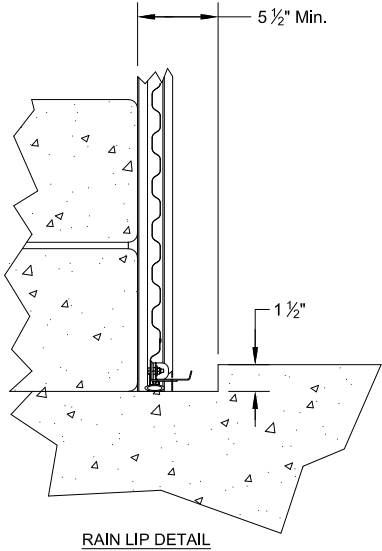
(*) FOR PUSH-UP OPERATION.....6"
FOR HAND CHAIN OPERATION.....7"
FOR ELECTRIC OPERATION.....7 1/2"
FOR OUTSIDE OF CHAIN DRIVE.....8 1/2"
NOTE: RIGHT SIDE DRIVE SHOWN



12 GA GUIDE MOUNTING DETAIL

HEADROOM REQUIRED

| OPENING HEIGHT | VERTICAL HEADROOM | HORIZONTAL HEADROOM |
|-------------------------|-------------------|---------------------|
| THRU 8'-0" | 19" | 19" |
| OVER 8'-0" THRU 10'-0" | 20" | 20" |
| OVER 10'-0" THRU 14'-0" | 20 1/2" | 20" |



END VIEW

INSIDE ELEVATION

| FACTORY ORDER NUMBER | DOOR SERIES | | QTY | OPENING SIZE | | JAMB TYPE | | | OUTSIDE CURTAIN COLOR | OPERATION | | | OPERATION HAND | WEATHERSTRIP | | | ADDED OPTIONS |
|----------------------|-------------|---------|-----|--------------|--------|-----------|------------|------|-----------------------|-----------|---------------|----------|----------------|--------------|--------|------|---------------|
| | 1950HD | 1950HDI | | WIDTH | HEIGHT | STEEL | CONC./MAS. | WOOD | | PUSH UP | REDUCED CHAIN | ELECTRIC | | TOP | HEADER | SIDE | |
| | | | | | | | | | | | | | | | | | |
| | | | | | | | | | | | | | | | | | |
| | | | | | | | | | | | | | | | | | |

COMMERCIAL DOOR SERIES: 1950HD/1950HDI

| | | | |
|---|--|--------------|-----|
| CUSTOMER NUMBER: | | DATE: | |
| CUSTOMER NAME: | | CONTACT: | |
| PROJECT NAME: | | | |
| PROJECT LOCATION: | | | |
| PLANT: | | SALESPERSON: | |
| DRAWN BY: | | DATE: | |
| DRAWING NUMBER: | | SHT: | OF: |
| JANUS INTERNATIONAL GROUP, LLC. 135 JANUS INTERNATIONAL BLVD. TEMPLE, GA 30179-4435 770-562-2850 FAX: 770-562-2264 | | | |