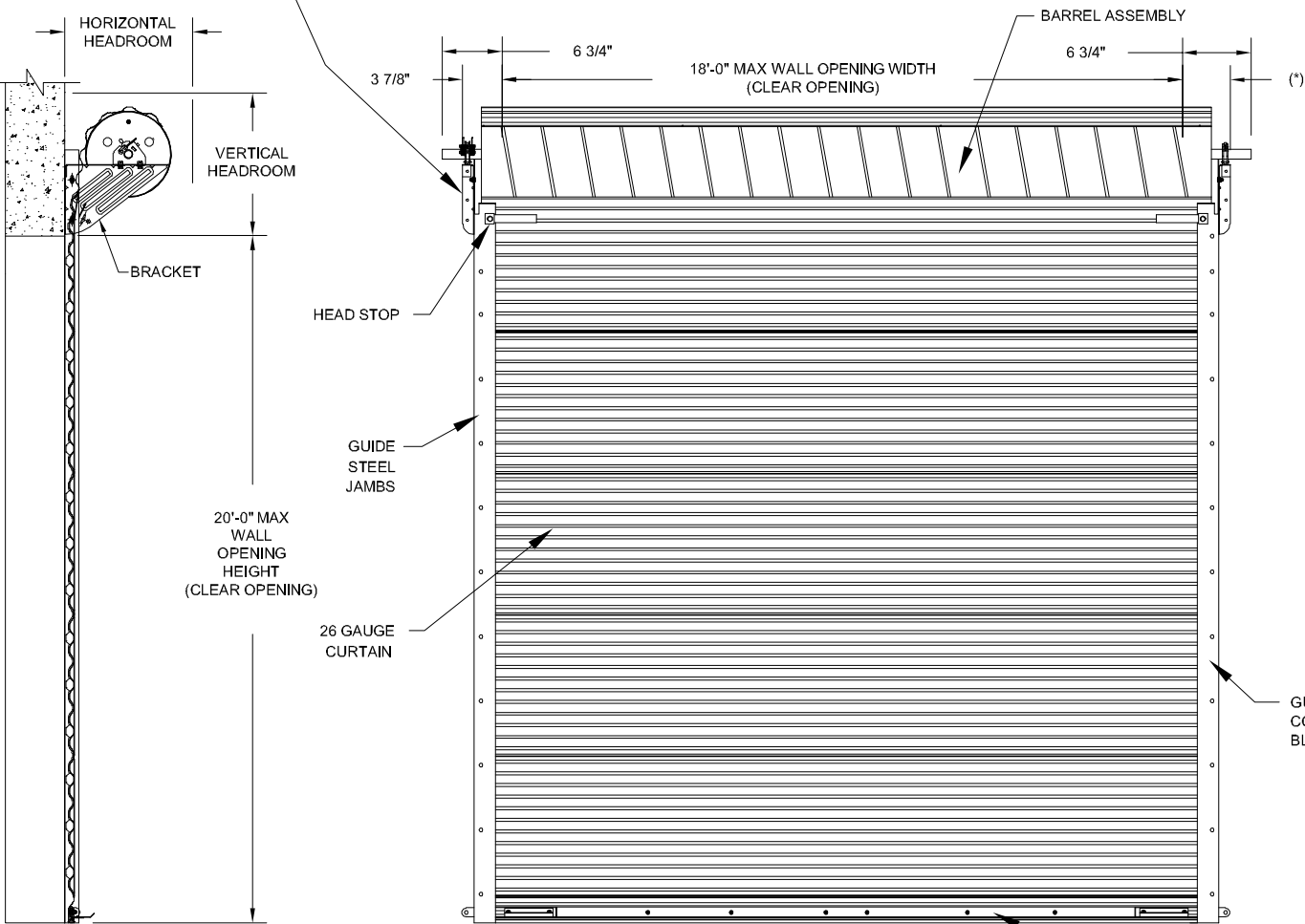


BRACKET ATTACHMENT

CONCRETE/FILLED BLOCK: DEWALT SCREW-BOLT+, 3/8 X 1 3/4" LONG
STEEL: HEX BOLT, GR 5, 3/8-16 X 1 1/4" LONG OR 3/8-16 X 1" HWH
TYPE 23 THREAD-CUTTING SCREW

(*) FOR PUSH-UP OPERATION: 3 7/8"
FOR HAND CHAIN OPERATION: 4 5/8"
FOR ELECTRIC OPERATION: 5 3/8"
FOR OUTSIDE OF CHAIN DRIVE: 6 1/8"
NOTE: RIGHT SIDE DRIVE SHOWN

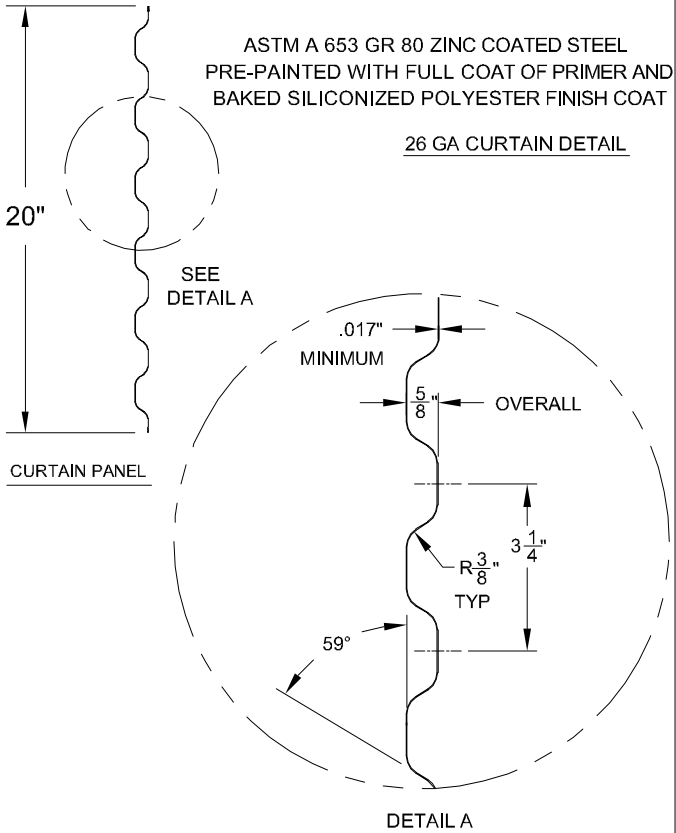


HEADROOM REQUIRED		
OPENING HEIGHT	VERTICAL HEADROOM	HORIZONTAL HEADROOM
THRU 8'-0"	17"	19"
OVER 8'-0" THRU 10'-0"	19"	21"
OVER 10'-0" THRU 14'-0"	20"	22"
OVER 14'-0" THRU 16'-0"	21"	23"
OVER 16'-0" THRU 18'-0"	22"	24"
OVER 18'-0" THRU 20'-0"	23"	25"

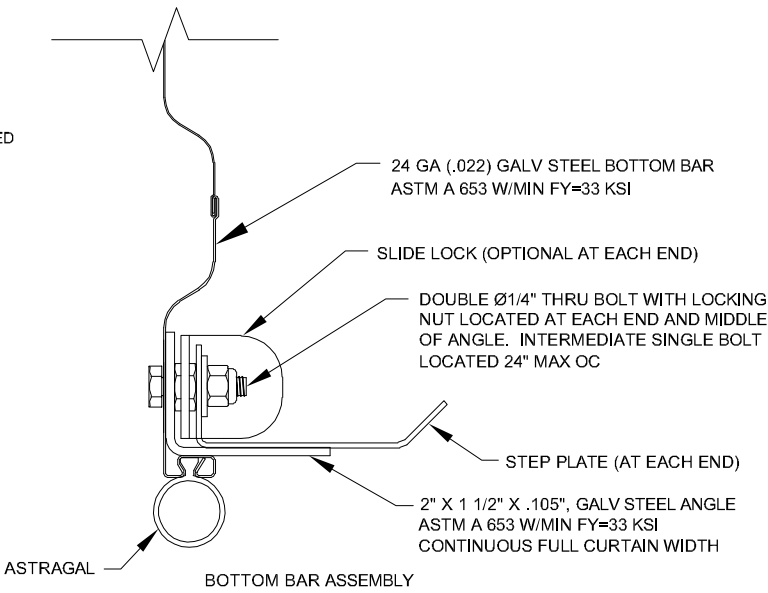
ALLOWABLE TRANSVERSE DESIGN WIND LOADS (PSF)

MAX DOOR WIDTH	MAX DOOR HEIGHT	DESIGN LOAD POSITIVE (PSF)	DESIGN LOAD NEGATIVE (PSF)
6'-0"	20'-0"	71.2	79.1
7'-0"	20'-0"	61.2	68.0
8'-0"	20'-0"	53.6	59.6
9'-0"	20'-0"	47.8	53.1
10'-0"	20'-0"	43.0	47.8
11'-0"	20'-0"	39.2	43.5
12'-0"	20'-0"	36.0	40.0
13'-0"	20'-0"	30.6	34.0
14'-0"	20'-0"	26.6	29.5
15'-0"	20'-0"	23.4	26.0
16'-0"	20'-0"	20.9	23.2
17'-0"	20'-0"	18.8	20.9
18'-0"	20'-0"	16.9	18.8

REVISIONS			
REV	DESCRIPTION	DATE	APPROVAL
—	DRAWING RELEASE	1-31-03	DM
A	ADDED "T" BRACKET OPTION	01-23-12	CS
B	FASTENER CHANGE, 14 GA & 12 GA JAMBS ADDED	06-08-18	CS



GUIDE CONCRETE/FILLED BLOCK JAMBS



John E. Scates, P.E.
2560 King Arthur Blvd,
Ste 124
Lewisville, TX 75056
FL PE 51737

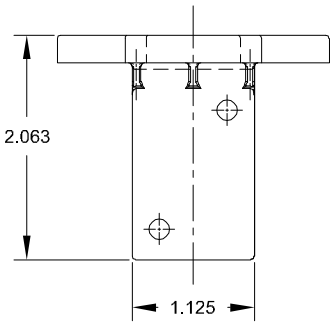
Professional Engineer's seal provided only for
verificaiton of windload construction details.

SIDE VIEW

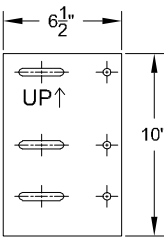
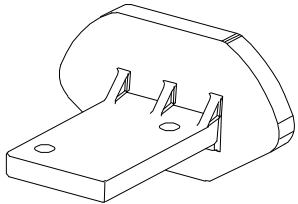
COMMERCIAL WINDLOCK

INSIDE ELEVATION

BOTTOM BAR ASSEMBLY



MATERIAL:
BLACK NYLON
TYPE 6/6



SMALL MOUNTING PLATE

INSTALL ON BOTH JAMBS FOR
BRACKET ATTACHMENT TO STEEL
JAMBS OF METAL BUILDINGS

THESE CONFIDENTIAL DOCUMENTS SUBMITTED BY JANUS CONTAIN INFORMATION OF A PROPRIETARY NATURE AND MAY NOT BE REPRODUCED OR USED TO MANUFACTURE ANYTHING IN PART OR IN WHOLE FOR ANY PURPOSE OTHER THAN THAT WHICH IS NECESSARY FOR PREPARATION OF BIDS OF ENGINEERING WITHOUT THE EXPRESS PERMISSION OF JANUS WHICH MAY RECALL DOCUMENTS AT ANY TIME.

UNLESS OTHERWISE SPECIFIED DIMENSIONS ARE IN INCHES AND TOLERANCES ARE:

DECIMAL	FRACTIONS	ANGLES	HOLE DIAMETERS
.XX ±.03	± 1/16"	± 1°	UNDER .251 +.004 -.003
.XXX ±.005			.251 to .500 +.006 -.003
			OVER .500 +.008 -.003

PART NUMBER:	NA
MATERIAL:	NA
APPLIED FINISH:	NA
UNIT OF MEASURE:	NA
APPROVALS	DATE
DRAWN: BECKY NELSON	2-1-11
CHECKED: DON MILLS	2-21-11
APPROVED: DON MILLS	2-21-11

JANUS INTERNATIONAL GROUP, LLC.

135 JANUS INTERNATIONAL BLVD TEMPLE, GA 30179

770-562-2850/Fax 770-562-2264

© 2018 Janus International Group, LLC. All Rights Reserved

CERTIFIED WIND LOAD RATED
26 GA SERIES 3652 DOOR ASSEMBLY
MAX SIZE 18'-0" X 20'-0"

SIZE B	DRAWING NUMBER: T1014	REV: B
SCALE: NONE	SHEET: 1	OF: 2

SEE SHEET 2 FOR NOTES

"Printed copies of this document are not considered signed and sealed and the signature must be verified on any electronic copies."

2 2