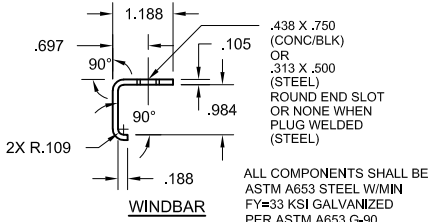


BRACKET ATTACHMENT
CONCRETE/FILLED BLOCK: POWERS WEDGE-BOLT, 3/8 X 1-3/4" LONG
STEEL: HEX BOLT, GR.5, 3/8-16 X 1-1/4" LONG

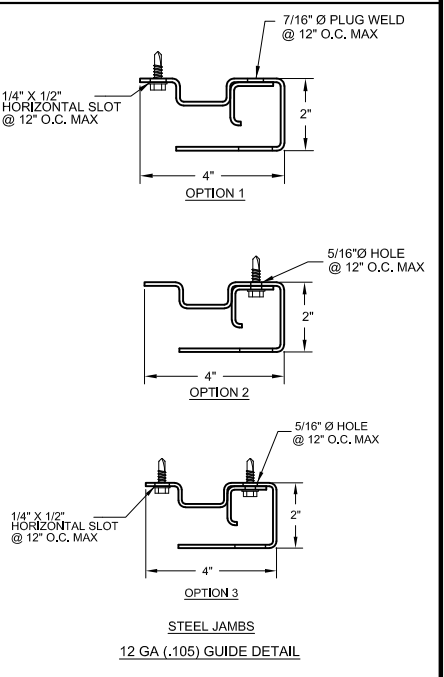
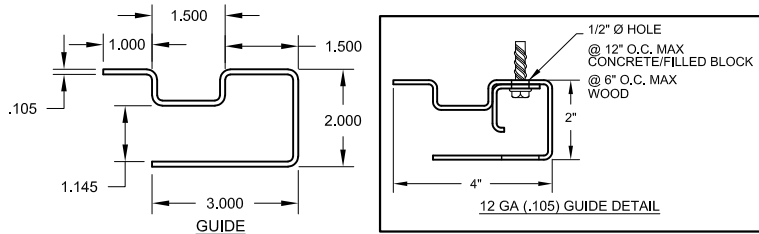
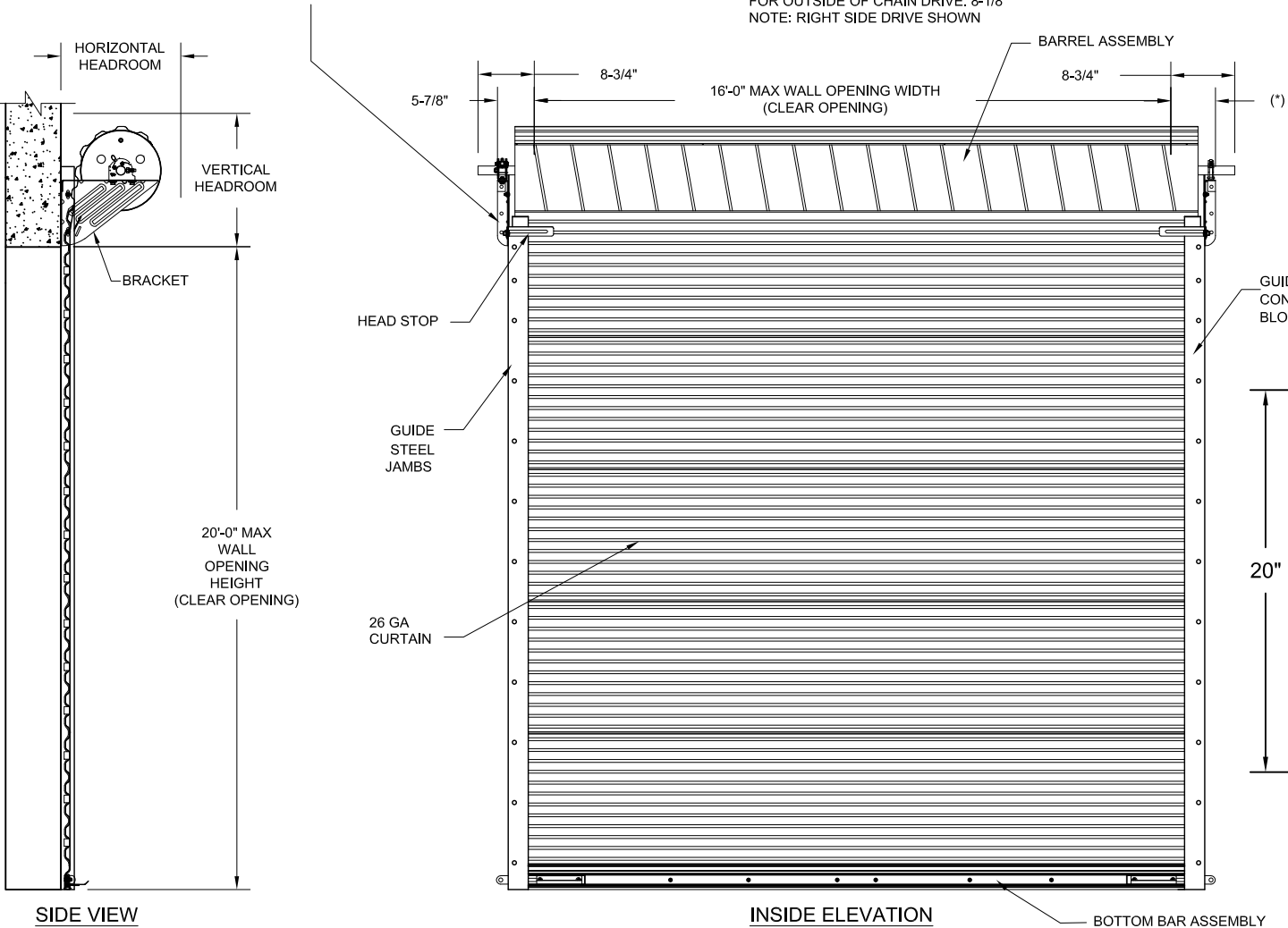
(*) FOR PUSH-UP OPERATION: 5-7/8"
FOR HAND CHAIN OPERATION: 6-5/8"
FOR ELECTRIC OPERATION: 7-3/8"
FOR OUTSIDE OF CHAIN DRIVE: 8-1/8"
NOTE: RIGHT SIDE DRIVE SHOWN

HEADROOM REQUIRED

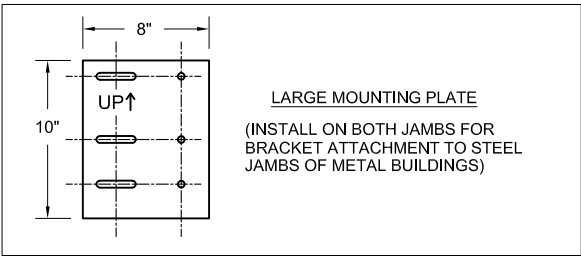
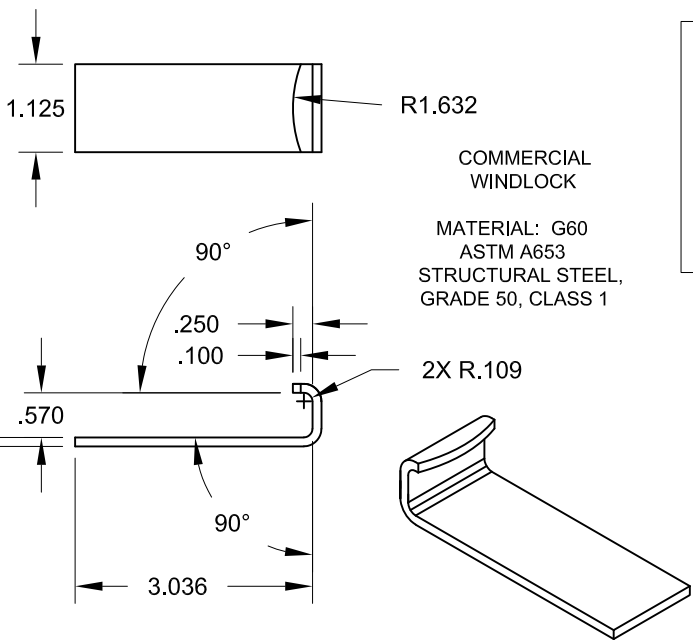
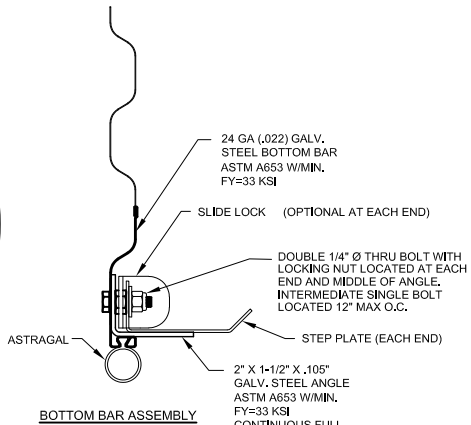
OPENING HEIGHT	VERTICAL HEADROOM	HORIZONTAL HEADROOM
THRU 8'-0"	20"	20"
OVER 8'-0" THRU 10'-0"	21"	21"
OVER 10'-0" THRU 14'-0"	21'-1/2"	21"
OVER 14'-0" THRU 16'-0"	22"	21"
OVER 16'-0" THRU 18'-0"	22"	22"
OVER 18'-0" THRU 20'-0"	22"	22"



REVISIONS			
REV	DESCRIPTION	DATE	APPROVAL
	DRAWING RELEASE	1-31-03	DM
A	GUIDE ATTACH AT TOE	11-13-03	DM
B	ADD GUIDE OPTION 3	4-13-04	DM
C	NOTE REVISION	6-17-09	CS
D	ADDED "T" BRACKET OPTION	1-20-12	CS
E	ADDED CHARTED PSF VALUES	2-28-14	CS
F	JS CHARTED VALUE REVISION	10-12-20	CS
G	WOOD JAMBS ADDED	10-15-21	CS



ASTM A653 GR 80 ZINC COATED STEEL
PRE-PAINTED WITH FULL COAT OF PRIMER AND
BAKED SILICONIZED POLYESTER FINISH COAT



Printed copies of this document are not considered signed and sealed and the signature must be verified on any electronic copies

John E. Scates, P.E.
2560 King Arthur Blvd, Ste 124-54
Lewisville, TX 75056
FL PE 51737

Professional Engineer's seal provided only for
verificaiton of windload construction details.

THESE CONFIDENTIAL DOCUMENTS SUBMITTED BY JANUS CONTAIN INFORMATION OF A PROPRIETARY NATURE AND MAY NOT BE REPRODUCED OR USED TO MANUFACTURE ANYTHING IN PART OR IN WHOLE FOR ANY PURPOSE OTHER THAN THAT WHICH IS NECESSARY FOR PREPARATION OF BIDS OF ENGINEERING WITHOUT THE EXPRESS PERMISSION OF JANUS WHICH MAY RECALL DOCUMENTS AT ANY TIME.

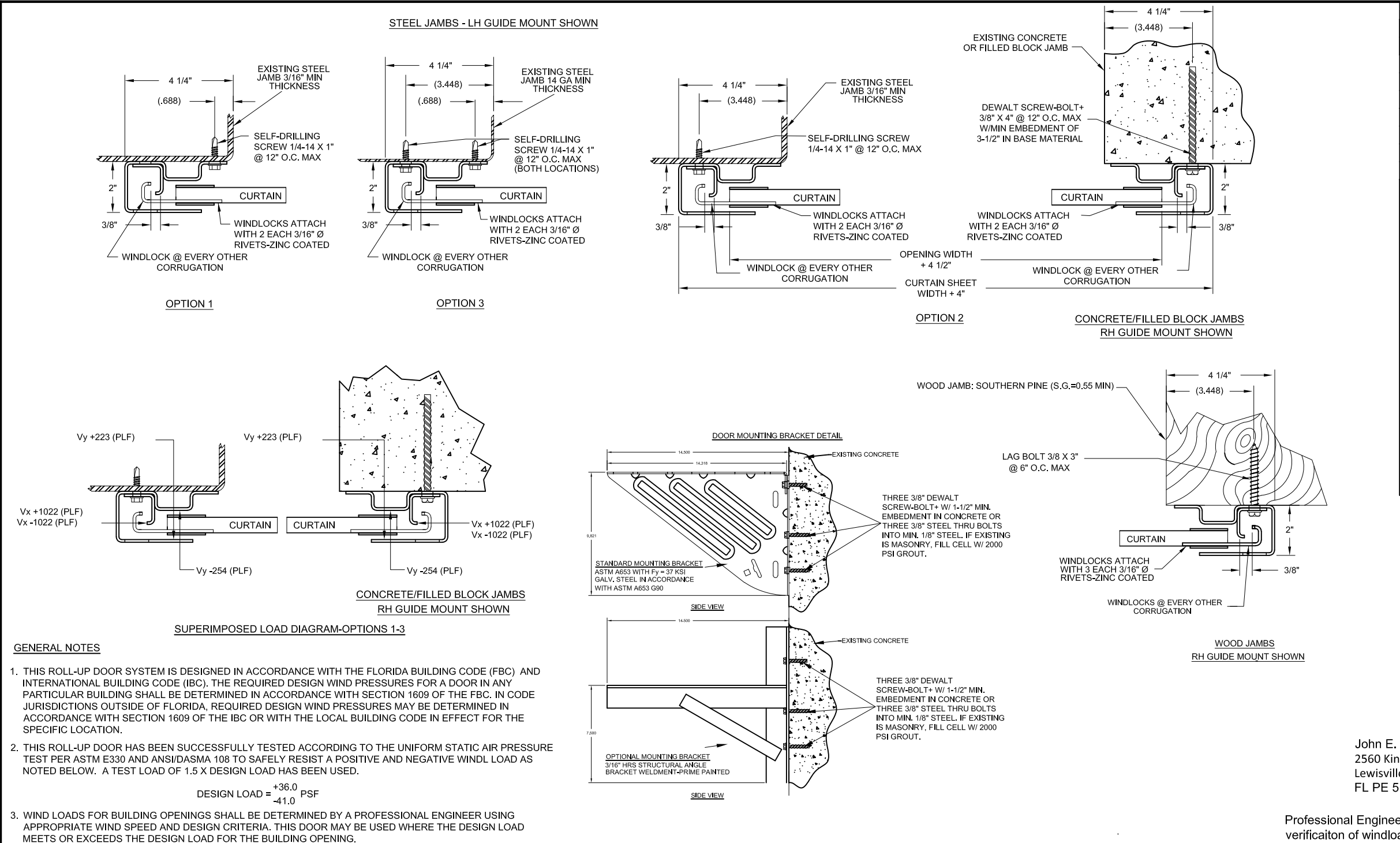
UNLESS OTHERWISE SPECIFIED DIMENSIONS ARE IN INCHES. TOLERANCES LISTED BELOW.

DECIMAL	FRACTIONS	ANGLES	HOLE DIAMETERS
X.XX X.XXX	+/-0.030" +/-0.005"	+/-1/16"	+/- 0° 30'
			UNDER 0.251 + 0.004 - 0.003
			0.251 - 0.500 + 0.006 - 0.003
			OVER 0.500 + 0.008 - 0.003

PART NUMBER:	
MATERIAL:	
APPLIED FINISH:	
UNIT OF MEASURE:	
APPROVALS	DATE
DRAWN: BECKY NELSON	1-31-03
CHECKED: DON MILLS	1-31-03
APPROVED: DON MILLS	1-31-03

JANUS INTERNATIONAL CORPORATION			
135 JANUS INTERNATIONAL BLVD TEMPLE, GA 30179			
770-562-2850/Fax 770-562-2264			
© 2014 Janus International Corporation All Rights Reserved			
CERTIFIED WIND LOAD RATED 26 GA SERIES 3100 DOOR ASSEMBLY MAX. SIZE 16'-0" X 20'-0"			
SIZE B	DRAWING NUMBER: T1004	REV: G	
SCALE: NONE		SHEET: 1	OF: 2

SEE SHEET 2 FOR NOTES



REVISIONS			
REV	DESCRIPTION	DATE	APPROVAL
---	DRAWING RELEASE	1-31-03	DM
A	GUIDE ATTACH AT TOE	11-13-03	DM
B	ADD GUIDE OPTION 3	4-13-04	DM
C	NOTE REVISION	6-17-09	CS
D	ADDED "T" BRACKET OPTION	1-20-12	CS
E	ADDED CHARTED PSF VALUES	2-28-14	CS
F	JS CHARTED VALUE REVISION	10-12-20	CS
G	WOOD JAMBS ADDED	10-15-21	CS

ALLOWABLE TRANSVERSE DESIGN WIND LOADS (PSF)			
MAX DOOR WIDTH	MAX DOOR HEIGHT	DESIGN LOAD POSITIVE (PSF)	DESIGN LOAD NEGATIVE (PSF)
8'-0"	20'-0"	53.1	60.5
9'-0"	20'-0"	47.4	54.0
10'-0"	20'-0"	42.8	48.8
11'-0"	20'-0"	39.0	44.5
12'-0"	20'-0"	36.0	41.0
13'-0"	20'-0"	31.0	35.4
14'-0"	20'-0"	27.3	31.1
15'-0"	20'-0"	24.2	27.6
16'-0"	20'-0"	21.6	24.7

John E. Scates, P.E.
2560 King Arthur Blvd, Ste 124-54
Lewisville, TX 75056
FL PE 51737

Professional Engineer's seal provided only for verification of windload construction details.

THESE CONFIDENTIAL DOCUMENTS SUBMITTED BY JANUS CONTAIN INFORMATION OF A PROPRIETARY NATURE AND MAY NOT BE REPRODUCED OR USED TO MANUFACTURE ANYTHING IN PART OR IN WHOLE FOR ANY PURPOSE OTHER THAN THAT WHICH IS NECESSARY FOR PREPARATION OF BIDS OF ENGINEERING WITHOUT THE EXPRESS PERMISSION OF JANUS WHICH MAY RECALL DOCUMENTS AT ANY TIME.						PART NUMBER:		<div>JANUS INTERNATIONAL CORPORATION</div> <div>135 JANUS INTERNATIONAL BLVD TEMPLE, GA 30179</div> <div>770-562-2850/Fax 770-562-2264</div> <div>© 2014 Janus International Corporation All Rights Reserved</div>					
						MATERIAL:							
						APPLIED FINISH:							
						UNIT OF MEASURE:							
						APPROVALS						DATE	
UNLESS OTHERWISE SPECIFIED DIMENSIONS ARE IN INCHES. TOLERANCES LISTED BELOW.						DRAWN:		1-31-03		<div>CERTIFIED WIND LOAD RATED</div> <div>26 GA SERIES 3100 DOOR ASSEMBLY</div> <div>MAX. SIZE 16'-0" X 20'-0"</div>			
						CHECKED:		1-31-03					
						APPROVED:		1-31-03					
						DRAWING NUMBER:		T1004					
						REV:		G					
						SIZE		B					
						SCALE:		NONE				SHEET: 2 OF: 2	

DECIMAL		FRACTIONS	ANGLES	HOLE DIAMETERS	
X.XX	+/-0.030"	+/-1/16"	+/- 0° 30'	UNDER 0.251	+ 0.004 - 0.003
X.XXX	+/-0.005"			0.251 - 0.500	+ 0.006 - 0.003
				OVER 0.500	+ 0.008 - 0.003