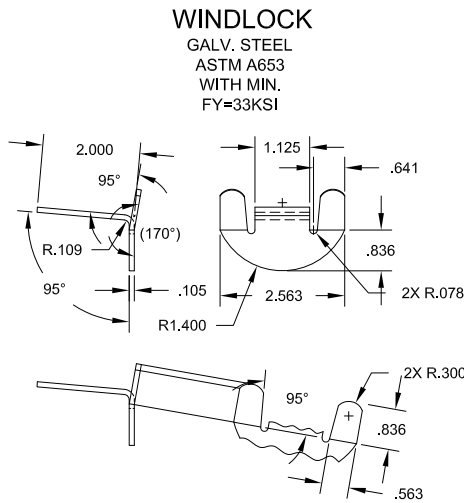


John E. Scates, P.E.
2560 King Arthur, STE 124-54
Lewisville, TX 75056
FL PE 51737_TX PE 56308/F2203

Professional Engineer's seal provided only for
verificaion of windload construction details.



OPENING HEIGHT	VERTICAL HEADROOM	HORIZONTAL HEADROOM
THRU 7'-4"	15-1/2"	17-1/2"
OVER 7'-4" THRU 8'-8"	16"	18"
OVER 8'-8" THRU 10'-0"	17"	18-1/4"

HEADROOM REQUIRED

THESE CONFIDENTIAL DOCUMENTS SUBMITTED BY JANUS CONTAIN INFORMATION OF A PROPRIETARY NATURE AND MAY NOT BE REPRODUCED OR USED TO MANUFACTURE ANYTHING IN PART OR IN WHOLE FOR ANY PURPOSE OTHER THAN THAT WHICH IS NECESSARY FOR PREPARATION OF BIDS OF ENGINEERING WITHOUT THE EXPRESS PERMISSION OF JANUS WHICH MAY RECALL DOCUMENTS AT ANY TIME.

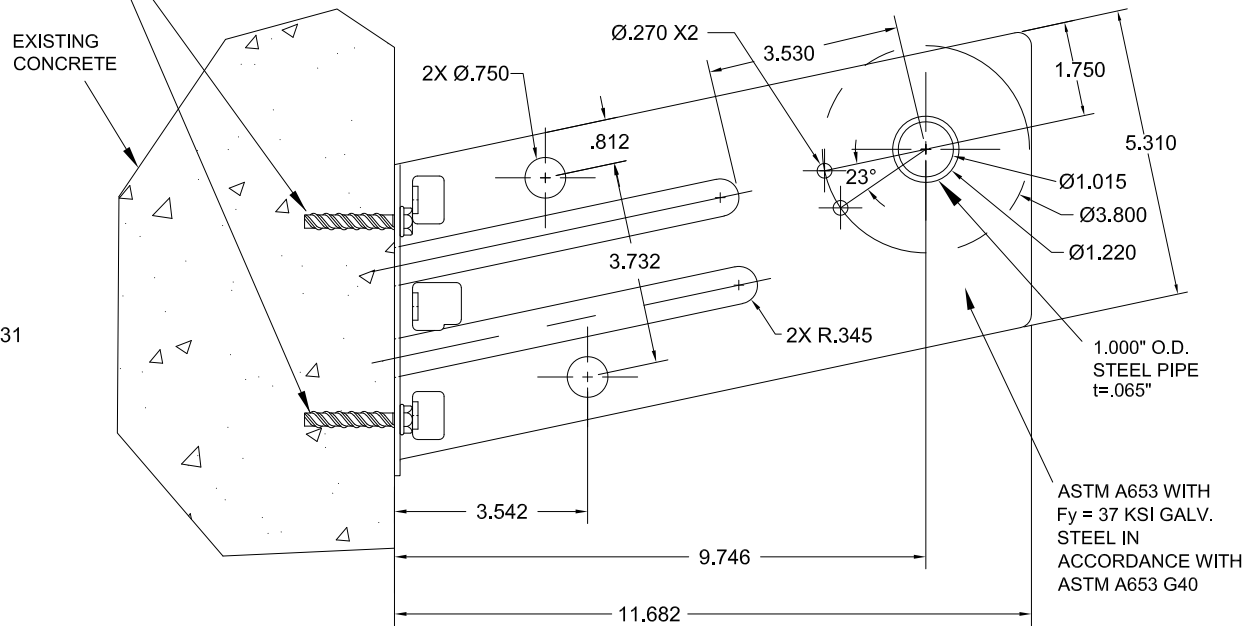
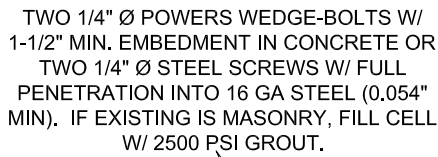
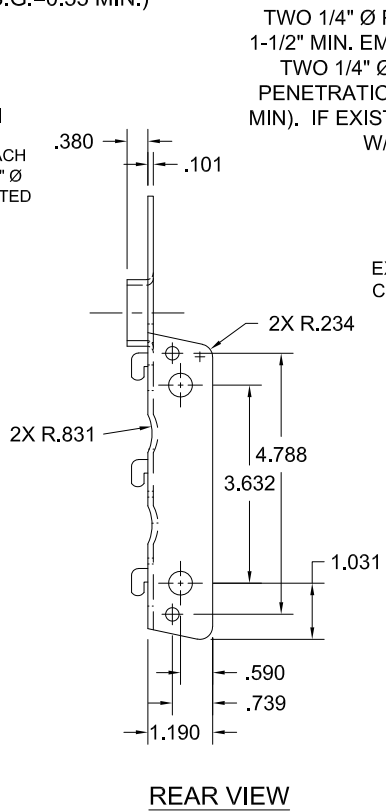
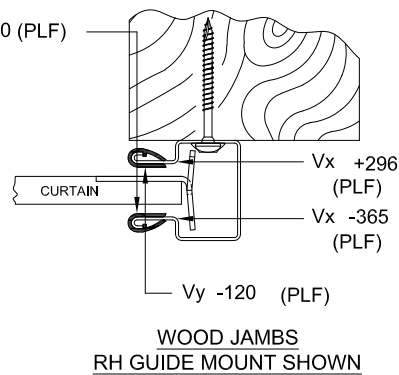
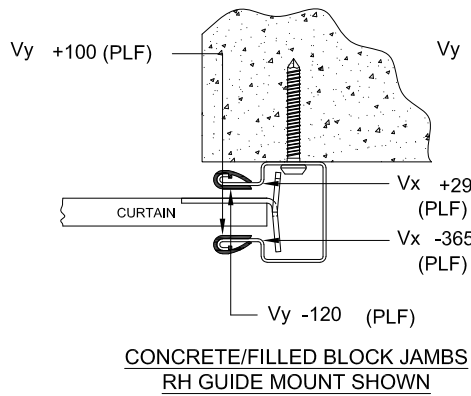
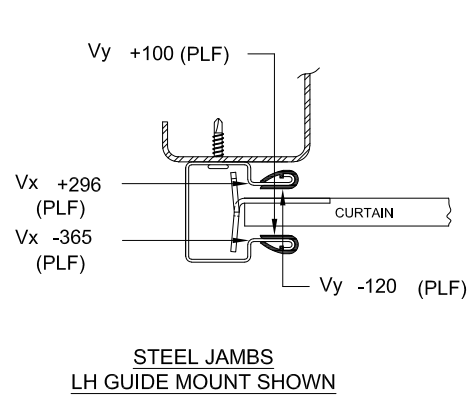
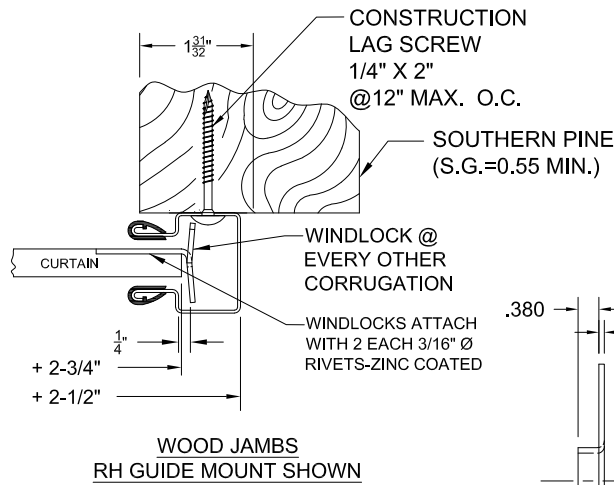
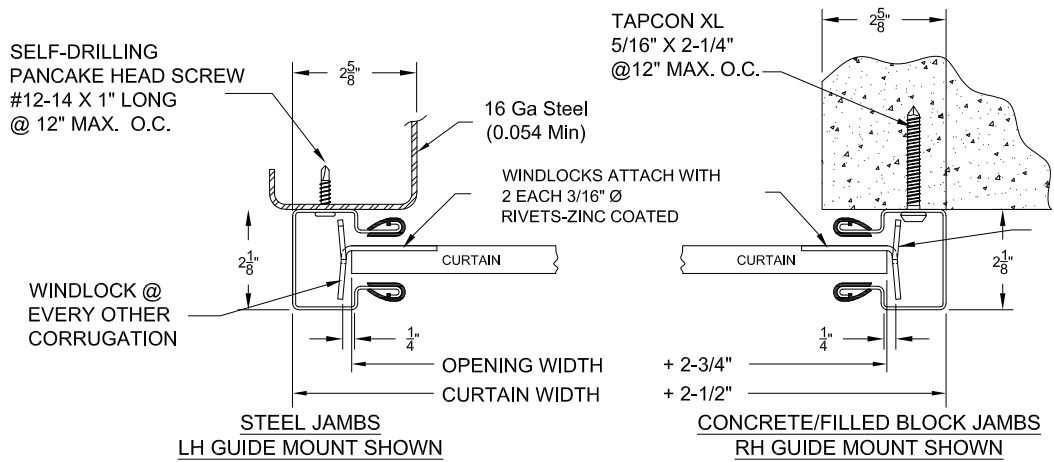
UNLESS OTHERWISE SPECIFIED DIMENSIONS ARE IN INCHES AND TOLERANCES ARE:

DECIMAL	FRACTIONS	ANGLES	HOLE DIAMETERS
.XX ±.03	± 1/16	± 0° 30'	UNDER 0.251 +.004 -.003
.XXX ±.005			0.251 to 0.500 +.006 -.003
			OVER 0.500 +.008 -.003

PART NUMBER:		JANUS INTERNATIONAL GROUP, LLC.			
MATERIAL:		135 JANUS INTERNATIONAL BLVD. TEMPLE, GA 30179-4435			
APPLIED FINISH:		770-562-2850/Fax 770-562-2264			
UNIT OF MEASURE:		© 2017 Janus International Group, LLC. All Rights Reserved			
APPROVALS		DATE		CERTIFIED WIND LOAD RATED 26 GA SERIES 750 DOOR ASSEMBLY MAX. SIZE: 8'-8" X 12'-0"	
DRAWN: BECKY NELSON		11-14-02			
CHECKED: DON MILLS		11-14-02			
APPROVED: DON MILLS		11-14-02			
SIZE B		DRAWING NUMBER: T1002			REV: F
SCALE: NONE				SHEET: 1	OF: 2

"Printed copies of this document are not considered signed and sealed and
the signature must be verified on any electronic copies."

	REVISIONS			
REV	DESCRIPTION	DATE	APPROVAL	
—	DRAWING RELEASE	11-14-02	DM	
A	NOTE REVISIONS	4-16-04	DM	
B	NOTE REVISIONS	6-17-09	CS	
C	RE-TEST 9-26-13	10-24-13	CS	
D	16 GA. STEEL JAMB/1.5X1.5X.072MIN BB	9-19-16	CS	
E	Note: Alternate Concrete/Masonry Fasteners	09/25/17	CS	
F	ADD WOOD JAMB DETAIL & FASTENER	03/02/20	CS	



SUPERIMPOSED LOAD DIAGRAM

GENERAL NOTES

1. THIS ROLL-UP DOOR SYSTEM IS DESIGNED IN ACCORDANCE WITH THE FLORIDA BUILDING CODE.
2. THIS ROLL-UP DOOR HAS BEEN TESTED IN ACCORDANCE WITH ASTM E-330 AND COMPLIES WITH ANSI/DASMA 108.

DESIGN LOAD = $\begin{matrix} +24.4 \\ -27.0 \end{matrix}$ PSF

3. WIND LOADS FOR BUILDING OPENINGS SHALL BE DETERMINED BY A PROFESSIONAL ENGINEER USING APPROPRIATE WIND SPEED AND DESIGN CRITERIA. THIS DOOR MAY BE USED WHERE THE DESIGN LOAD MEETS OR EXCEEDS THE DESIGN LOAD FOR THE BUILDING OPENING.

4. SUPERIMPOSED LOADS ON THE JAMBS FROM THIS DOOR ARE DESIGNED AS V_x AND V_y HEREIN. CONTRACTORS SHALL HAVE BUILDING ENGINEER VERIFY ADEQUACY OF BUILDING STRUCTURE TO RESIST SUPERIMPOSED LOADS V_x , V_y , AND BRACKET LOADS SHOWN.

5. ALL WELDING SHALL BE PERFORMED BY QUALIFIED WELDERS IN ACCORDANCE WITH A.W.S. SPECIFICATIONS, LATEST EDITION. ALL WELDING ELECTRODES SHALL CONFORM TO A.W.S. A5.1 GRADE E-70.

6. DOORS SHALL BE PROVIDED WITH LOCK MECHANISMS AT THE OPTION OF THE OWNER.

7. ALL BOLTS AND WASHERS SHALL BE GALVANIZED OR STAINLESS STEEL WITH A MINIMUM TENSILE STRENGTH OF 60 KSI.

8. ANCHOR NOTES:
- A. EMBEDMENT LENGTH DOES NOT INCLUDE STUCCO FINISH.
 - B. FOR HOLLOW MASONRY, FILL ALL CELLS @ ANCHOR WITH 2500 PSI GROUT.
 - C. ANCHORS SHALL BE INSTALLED IN ACCORDANCE WITH MANUFACTURER'S SPECIFICATIONS.
 - D. ALTERNATE FASTENERS: DEWALT SCREW BOLT+ AND SIMPSON TITEN HD.

9. DOOR OPERATION TYPED TO BE PUSH-UP.
10. GUIDE TO JAMB ATTACHMENT FASTENERS BEGIN 4" FROM FLOOR AND END 3-1/2" BELOW TOP OF WALL OPENING.
11. TEST DOOR WALL OPENING SIZE: 8'-8" X 8'-0"

THESE CONFIDENTIAL DOCUMENTS SUBMITTED BY JANUS CONTAIN INFORMATION OF A PROPRIETARY NATURE AND MAY NOT BE REPRODUCED OR USED TO MANUFACTURE ANYTHING IN PART OR IN WHOLE FOR ANY PURPOSE OTHER THAN THAT WHICH IS NECESSARY FOR PREPARATION OF BIDS OF ENGINEERING WITHOUT THE EXPRESS PERMISSION OF JANUS WHICH MAY RECALL DOCUMENTS AT ANY TIME.

UNLESS OTHERWISE SPECIFIED DIMENSIONS ARE IN INCHES AND TOLERANCES ARE:

DECIMAL	FRACTIONS	ANGLES	HOLE DIAMETERS
.XX ±.03	± 1/16	± 0° 30'	UNDER 0.251 ^{+.004} _{-.003}
.XXX ±.005			0.251 to 0.500 ^{+.006} _{-.003}
			OVER 0.500 ^{+.008} _{-.003}

PART NUMBER:

MATERIAL:

APPLIED FINISH:

UNIT OF MEASURE:

APPROVALS

BECKY NELSON

CHECKED.

APPROVED:

John E. Scates, P.E.
2560 King Arthur, STE 124-54
Lewisville, TX 75056
FL PE 51737_TX PE 56308/F2203

Professional Engineer's seal provided only for
verificaiton of windload construction details.

JANUS INTERNATIONAL GROUP, LLC.

135 JANUS INTERNATIONAL BLVD. TEMPLE, GA 30179-4435

770-562-2850/Fax 770-562-2264

©2017 Janus International Group, LLC. All Rights Reserved

CERTIFIED WIND LOAD RATED
26 GA SERIES 750 DOOR ASSEMBLY
MAX. SIZE: 8'-8" X 12'-0"

SIZE

DRAWING NUMBER:

T1002

SCALE

SHEET:

OF: