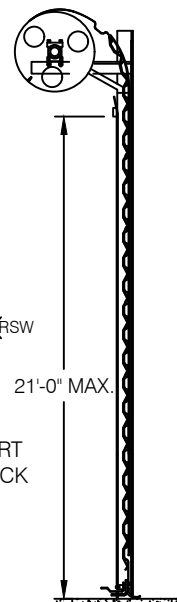
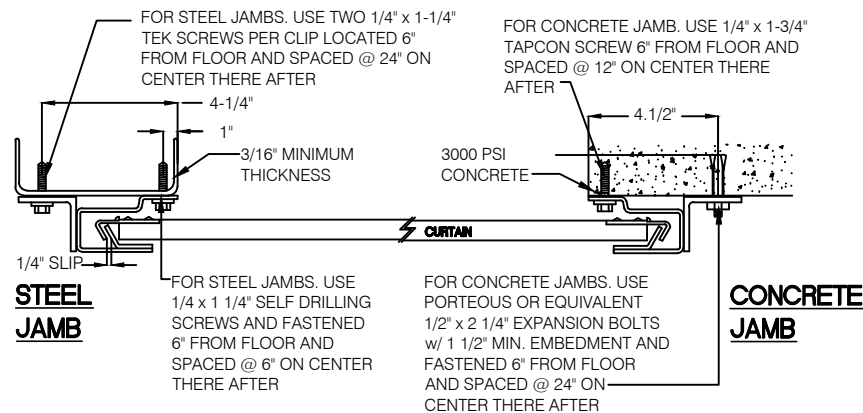


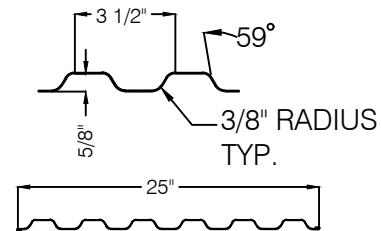
INTERIOR ELEVATION



SIDE ELEVATION

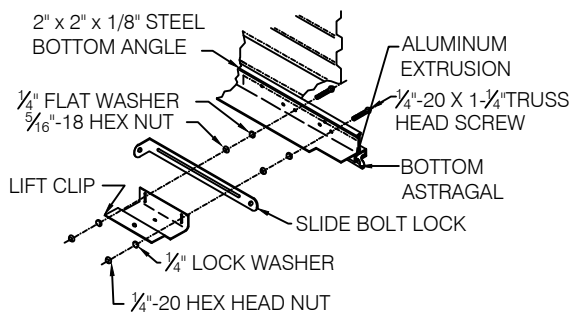


**SEAM
DETAIL**



CORRUGATED SHEET

ONE LOCK LOCATED AT EACH
END OF CURTAIN.



SLIDE BOLT LOCK AND BOTTOM BAR

John E. Scates, P.E.
2560 King Arthur Blvd, Ste
124-54
Lewisville, TX 75056
FL PE 51737

Professional Engineer's seal
provided only for verification
of windload construction
details.


ASTAAMERICA
BY JANUS INTERNATIONAL

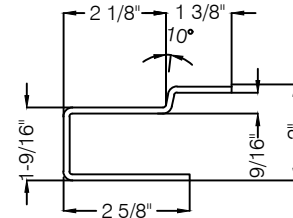
638 Cassville White Rd NW
Cartersville, GA 30121
PH: (770) 924-2600
Fax: (770) 974-1455
www.astaamerica.com

**MODEL 203 IMPACT RATED WINDLOCK
COMMERCIAL SHEET DOOR**

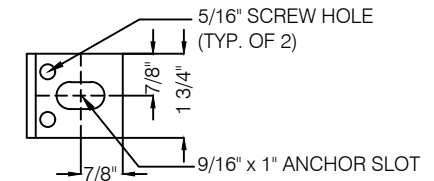
SEAL	TEST SIZE 14'-0"W x 10'H		DESIGN PRESSURE +/- 40.0	TEST PRESSURE +/- 60
SCALE : VARIES (DO NOT SCALE DRAWINGS)	MODELS 203IM 204IM		TEST LOCATION CERTIFIED TESTING LABORATORIES 124 PREMIER ROAD ORLANDO, FL 32822	
TOLERANCES FRACTION = +/- 1/32 .X = +/- .032 .XX = +/- .015 .XXX = +/- .005 < +/- 5	DRAWING #203IM		SHEET 1 OF 2	
DRAWN BY: SR ISSUE: 4-14-21				

GENERAL NOTES:

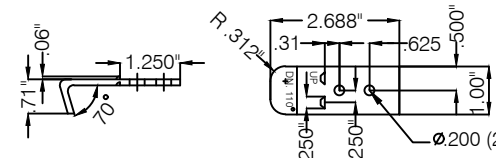
1. STEEL FOR CORRUGATED SHEET ASTM-A653 WITH MINIMUM YIELD STRENGTH OF 80 KSI AND TENSILE STRENGTH OF 82 KSI. (GRADE 80)
2. GUIDES ROLL FORMED (12) GAUGE GALVANIZED STEEL.
3. GUIDE INSERT FORMED (12) GAUGE GALVANIZED STEEL.
4. (10) GAUGED GALVANIZED STEEL WINDLOCK CLIP FASTENED WITH TWO 3/16" x .440" POP RIVETS ON SIX CORRUGATIONS PER SIDE OF EACH SHEET..
5. THIS DOOR HAS BEEN DESIGNED AND TESTED IN ACCORDANCE WITH THE FLORIDA BUILDING CODE AND THE INTERNATIONAL BUILDING CODE. THE DESIGN WIND PRESSURES REQUIRED FOR ANY DOOR SHALL BE DETERMINED USING THE APPROPRIATE SECTION OF THE CODE HAVING JURISDICTION WHERE THE BUILDING IS LOCATED.
6. THIS DOOR HAS BEEN SUCCESSFULLY TESTED TO:
 - THE UNIFORM STATIC AIR PRESSURE TEST PER ASTM E-330 AND ANSI/DASMA 108 TO A DESIGN LOAD OF +/- 40.0PSF
 - THE LARGE MISSILE IMPACT TEST PER TAS 201 AND ANSI/DASMA 115 WITH THE IMPACT DIRECTION TOWARD THE EXTERIOR FACE OF THE SLATS.
 - THE CYCLIC WIND PRESSURE TEST PER TAS 203 AND ANSI/DASMA 115.
7. ALL FASTENERS SHALL BE GALVANIZED OR ZINC COATED WITH A MINIMUM TENSILE STRENGTH OF 60 KSI.
8. BOTTOM BAR ASSEMBLY FASTENED 5 3/4" FROM EACH END AND 12" O.C. FROM CENTER USING 1/4" x 1" CARRIAGE BOLTS.



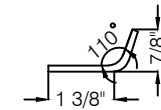
SEE NOTE #2



HEAVY DUTY GUIDE CLIP

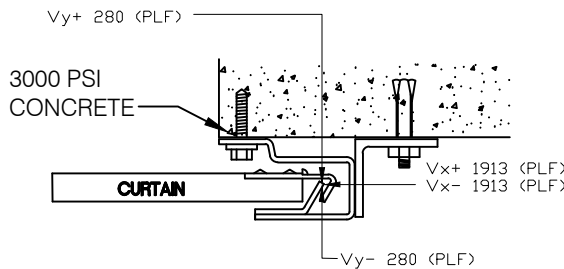


WINDLOCK CLIP
(SEE NOTE #4)



GUIDE INSERT
(SEE NOTE #3)


SUPERIMPOSED LOAD DIAGRAM



RH GUIDE MOUNT SHOWN

John E. Scates, P.E.
2560 King Arthur Blvd, Ste
124-54
Lewisville, TX 75056
FL PE 51737

Professional Engineer's seal
provided only for verification
of windload construction
details.

 ASTAAMERICA BY JANUS INTERNATIONAL		638 Cassville White Rd NW Cartersville, GA 30121 PH: (770) 924-2600 Fax: (770) 974-1455 www.astaamerica.com		
		MODEL 203 IMPACT RATED WINDLOCK COMMERCIAL SHEET DOOR		
SEAL				
SCALE : VARIES (DO NOT SCALE DRAWINGS)				
TOLERANCES				
FRACTION = +/- 1/32				
.X = +/- .032				
.XX = +/- .015				
.XXX = +/- .005 <= /- 5				
DRAWN BY: SR ISSUE: 4-14-21		TEST SIZE 14'-0"W x 10'H	DESIGN PRESSURE +/- 40.0	TEST PRESSURE +/- 60
MODELS 203IM 204IM		TEST LOCATION CERTIFIED TESTING LABORATORIES 124 PREMIER ROAD ORLANDO, FL 32822		
DRAWING #203IM			SHEET 2 OF 2	