

FIVE FINISH OPTIONS:

- White Topcoat
- Gray Topcoat
- Tan Topcoat
- Galvanized
- Stainless Steel

Powder Coat Finish is available in a variety of color options

40-year film integrity and a 35-year no-chalk/no-fade limited paint warranty.

STANDARD FEATURES:

- Enclosed hood
- Reduction gear chain hoist
- 3-piece structural steel guides
- Double angle bottom bar with weather seal
- 2-year limited warranty
- Guides, bottom bars, and headplates are powder coated black at the factory

SUPERIOR QUALITY. DURABILITY.

The **ASTA AMERICA 600 SERIES INSULATED ROLLING SERVICE DOOR** is engineered for exceptional quality, durability, and thermal efficiency. This high-performance door features 24, 22, 20, or 18-gauge slats with a flat profile, paired with a 24-gauge back slat that encases a 5/8-inch thick polyurethane core, delivering an impressive R-value of 7.2. Available in sizes ranging from 40' x 16' to 28' x 26' (size limits vary by model), the **600 Series** offers optional Windload and Miami-Dade certifications, making it ideal for high-wind areas. With its robust construction and thermal insulation, the **600 Series** is the perfect solution for industrial, commercial, and climate-controlled applications.



OPTIONS

Electric Operation: Easy fast motorized operation at a push of a button (motor mounting bracket available on request).

Miami Dade: Miami-Dade Impact certified (80 feet/sec impact speed & +60/-65 PSF) **

Slide Bolt Locks: Dual steel slide bolt locks attached to bottom suitable for padlocks (padlocks by other) (standard for manual/push-up operation).

Vision Panels: 5" x 3/4" cut out spaced approximately 3" apart and covered with clear Lexan.

Windload: Available design to +/- 50 PSF for 16' wide (22-gauge). Windload varies by size and model; for windload availability on large sizes contact customer service.

High Cycle Springs: Available in 50,000 cycles and 100,000 cycles.



**Contact ASTA for size and options, some limitations may apply.

600 SERIES INSULATED ROLLING SERVICE DOOR



SLAT PROFILE: Manufactured from commercial-grade galvanized steel and coated with super durable polyester paint backed by a 40-year film integrity and 25-year no-fade paint warranty. Injected polyurethane foam, effective insulating value to be R=7.2.



ENVIROCROM™ XMR POWDER COAT : Ultradurable polyester powder coat, with excellent chemical resistance, outdoor weathering, and scratch resistance.



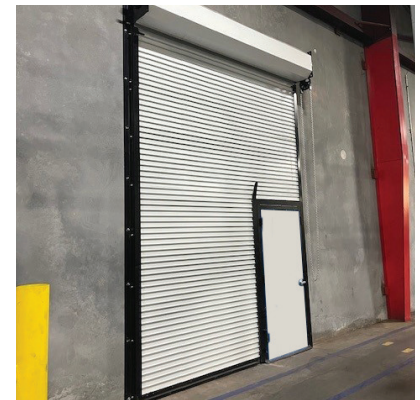
GUIDES: Angles to be 3/16" minimum thickness structural steel with removable head stops and 30" service cut-out. Guide depth to provide slat penetration adequate to satisfy specified windloading.



MIAMI DADE/WINDLOAD: Available in FBC- and TDI-certified windload options, including **Miami-Dade County impact certification** (20' x 30' Max Size, +60/-65 PSF).



STC RATING: ASTA 600 Series carries an STC rating of 24. Includes clip-on vinyl guide seal and 3" brush seal for header.



PASS DOOR-OPTIONAL: Metal pedestrian door integrated into the curtain, with the ability to swing frame open for clear opening.

| MODEL | SLAT PROFILE | SLAT MATERIAL | SLAT SIZES | MAX SIZE | COLORS/FINISHES | GUIDE |
|-----------|--------------|---|--------------------|------------------------|--|-----------------------------|
| 624 | Flat-265 | 24/24-ga Cold Rolled Galvanized Steel - Insulated FIP R=7.2 | Flat-2-5/8" x 5/8" | 26' x 30' or 31' x 20' | White/Gray/Tan/ Galvanized/Powder Coat | Min. 3/16" Structural Steel |
| 622 | Flat-265 | 22/24-ga Cold Rolled Galvanized Steel - Insulated FIP R=7.2 | Flat-2-5/8" x 5/8" | 26' x 30' or 31' x 20' | White/Gray/Tan/ Galvanized/Powder Coat | Min. 3/16" Structural Steel |
| 620 | Flat-265 | 20/24-ga Cold Rolled Galvanized Steel - Insulated FIP R=7.2 | Flat-2-5/8" x 5/8" | 26' x 30' or 31' x 20' | White/Gray/Tan/ Galvanized/Powder Coat | Min. 3/16" Structural Steel |
| 618 | Flat-265 | 18/24-ga Cold Rolled Galvanized Steel - Insulated FIP R=7.2 | Flat 2-5/8" x 5/8" | 26' x 30' or 31' x 20' | White/Gray/Tan/ Powder Coat | Min. 3/16" Structural Steel |
| 622S/620S | Flat-265 | 22/24-ga & 20/24-ga Stainless Steel - Insulated FIP R=7.2 | Flat 2-5/8" x 5/8" | 24' x 24' | Stainless Steel #4 | Min. 3/16" Structural Steel |

Exclusively Distributed by:

2025/03

Georgia / Texas
PH: 866-352-0110

For more information on the **600 Series**, please visit:
ASTAAmerica.com or email us at: marketing@ASTAAmerica.com