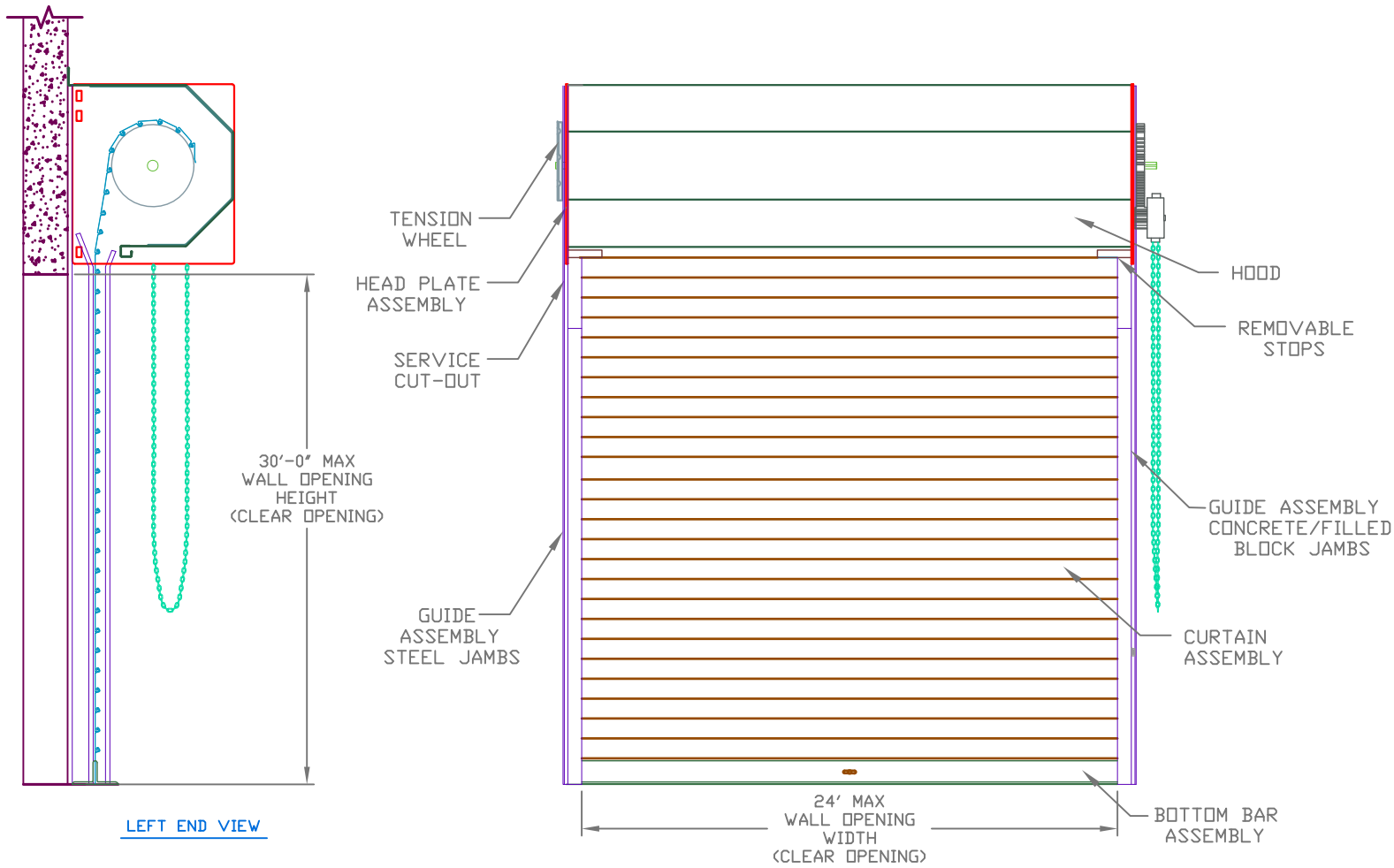


REVISIONS			
REV	DESCRIPTION	DATE	APPROVAL

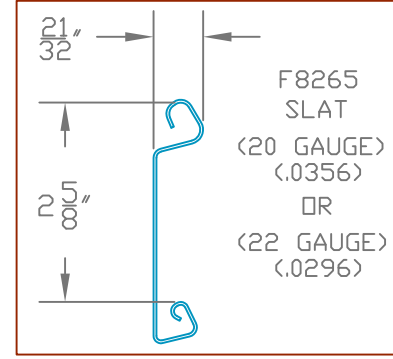
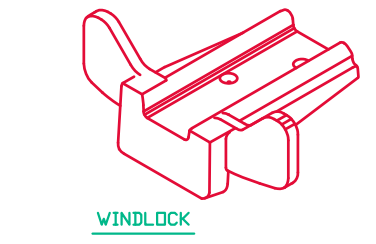
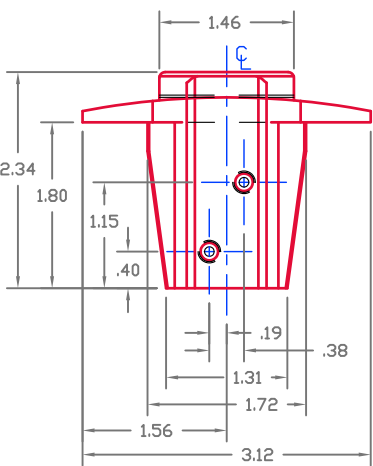


ALLOWABLE TRANSVERSE DESIGN WIND LOADS (PSF) FOR 22 GAUGE CURTAIN (TESTED SLAT GAUGE)

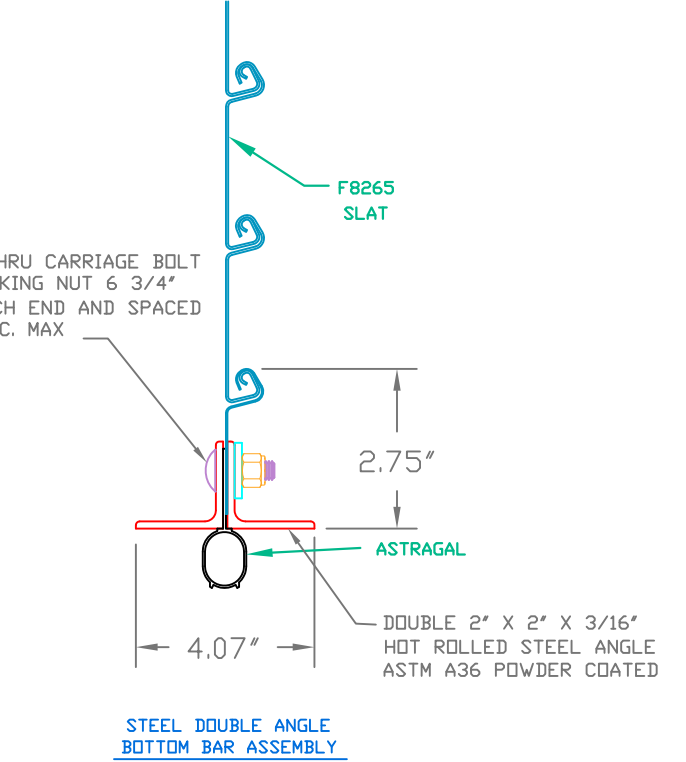
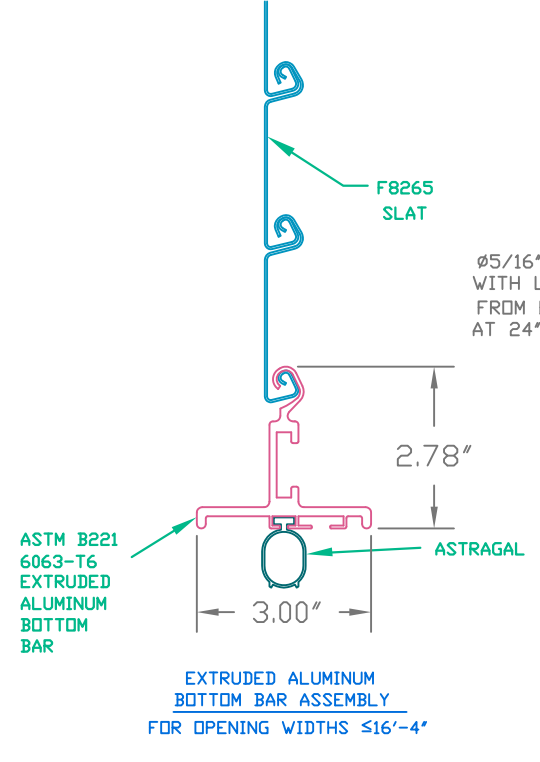
MAX DOOR WIDTH	MAX DOOR HEIGHT (FT)	DESIGN WIND LOADS (PSF)	MAX DOOR WIDTH	MAX DOOR HEIGHT (FT)	DESIGN WIND LOADS (PSF)
6'-4"	30	+/- 57.6	16'-4"	30	+/- 40
7'-4"	30	+/- 57.6	17'-4"	30	+/- 36.1
8'-4"	30	+/- 57.6	18'-4"	30	+/- 32.8
9'-4"	30	+/- 57.6	19'-4"	30	+/- 30.0
10'-4"	30	+/- 57.6	20'-4"	30	+/- 27.5
11'-4"	30	+/- 57.6	21'-4"	30	+/- 29.9
12'-4"	30	+/- 57.6	22'-4"	30	+/- 27.8
13'-4"	30	+/- 57.6	23'-4"	30	+/- 25.9
14'-4"	30	+/- 50.4	24'-4"	30	+/- 24.2
15'-4"	30	+/- 44.7			

ALLOWABLE TRANSVERSE DESIGN WIND LOADS (PSF) FOR 20 GAUGE CURTAIN

MAX DOOR WIDTH	MAX DOOR HEIGHT (FT)	DESIGN WIND LOADS (PSF)	MAX DOOR WIDTH	MAX DOOR HEIGHT (FT)	DESIGN WIND LOADS (PSF)
6'-4"	30	+/- 59.4	16'-4"	30	+/- 40.9
7'-4"	30	+/- 59.4	17'-4"	30	+/- 36.8
8'-4"	30	+/- 59.4	18'-4"	30	+/- 33.4
9'-4"	30	+/- 59.4	19'-4"	30	+/- 30.5
10'-4"	30	+/- 59.4	20'-4"	30	+/- 28.0
11'-4"	30	+/- 59.4	21'-4"	30	+/- 30.4
12'-4"	30	+/- 59.4	22'-4"	30	+/- 28.1
13'-4"	30	+/- 59.4	23'-4"	30	+/- 26.2
14'-4"	30	+/- 51.9	24'-4"	30	+/- 24.4
15'-4"	30	+/- 45.8			



ASTM A653 GR 40 ZINC COATED STEEL PRE-PAINTED WITH FULL COAT OF PRIMER AND BAKED SILICONIZED POLYESTER FINISH COAT



SEE SHEET 2 FOR NOTES

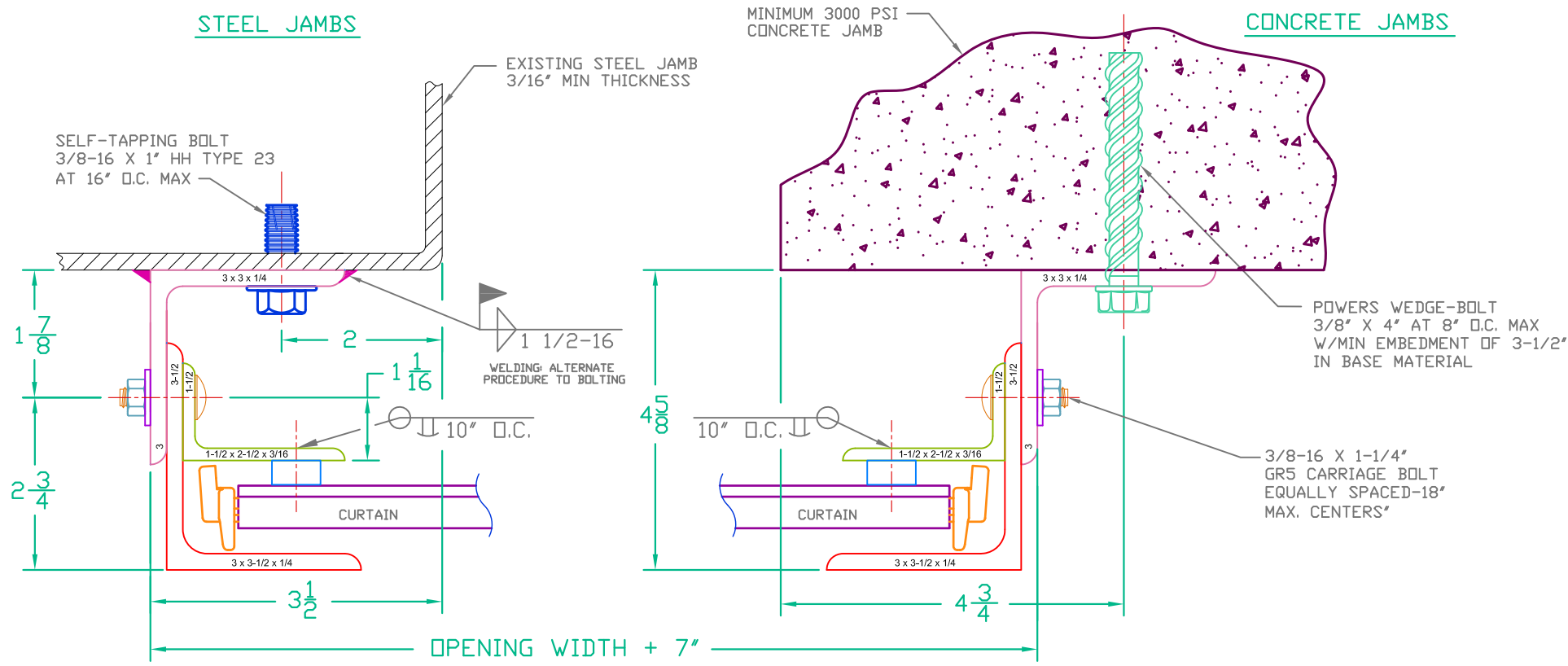
CERTIFIED WIND LOAD RATED
SERIES SD10 F8265 ANGLE GUIDES DOOR ASSEMBLY
MAX. SIZE 24'-4" X 30'-0"

JANUS INTERNATIONAL CORPORATION
134 Janus International Blvd. Temple, GA 30179
770-562-2850/Fax 770-562-1991
© 2009 Janus International Corporation All Rights Reserved

UNLESS OTHERWISE SPECIFIED, DIMENSIONS ARE IN INCHES AND TOLERANCES ARE:
ANGLES HOLE DIAMETER
± 0° 30' UNDER .251 +.004
DECIMAL UNDER .251 -.003
.XX ±.03 .251 TO .500 +.006
.XXX ±.005 OVER .500 -.003
FRACTIONS OVER .500 +.008
± 1/16 OVER .500 -.003

APPROVALS	DATE	APPROVALS	DATE	PART NUMBER	DRAWING NUMBER				
DRAWN BECKY NELSON	4-28-09	APPROVED CURT SCHROEDER	4-29-09	NA	RS9003				
CHECKED CURT SCHROEDER	4-29-09			MATERIAL NA	APPLIED FINISH NA				
THESE CONFIDENTIAL DOCUMENTS SUBMITTED BY JANUS CONTAIN INFORMATION OF A PROPRIETARY NATURE AND MAY NOT BE REPRODUCED OR USED TO MANUFACTURE ANYTHING IN PART OR IN WHOLE FOR ANY PURPOSE OTHER THAN THAT WHICH IS NECESSARY FOR PREPARATION OF BIDS OR ENGINEERING WITHOUT THE EXPRESS PERMISSION OF JANUS WHICH MAY RECALL DOCUMENTS AT ANY TIME.				UNIT OF MEASURE NA	SIZE B	SCALE NONE	SHEET 1	OF 2	REV —

REVISIONS			
REV	DESCRIPTION	DATE	APPROVAL



GENERAL NOTES

- THIS ROLLING DOOR SYSTEM IS DESIGNED IN ACCORDANCE WITH THE FLORIDA BUILDING CODE AND THE INTERNATIONAL BUILDING CODE. THE REQUIRED DESIGN WIND PRESSURES FOR A DOOR IN ANY PARTICULAR BUILDING SHALL BE DETERMINED IN ACCORDANCE WITH SECTION 1609 OF THE FBC. IN CODE JURISDICTIONS OUTSIDE OF FLORIDA, REQUIRED DESIGN WIND PRESSURES MAY BE DETERMINED IN ACCORDANCE WITH SECTION 1609 OF THE IBC OR WITH THE LOCAL BUILDING CODE IN EFFECT FOR THE SPECIFIC LOCATION.
- THIS ROLLING DOOR HAS BEEN TESTED IN ACCORDANCE WITH ASTM E-330 AND ANSI/DASMA 108 TO SAFELY RESIST A POSITIVE OR NEGATIVE WIND LOAD AS NOTED BELOW. A TEST LOAD OF 1.5 X DESIGN LOAD HAS BEEN USED.

DESIGN LOAD = +40 PSF
 -40
- WIND LOADS FOR BUILDING OPENINGS SHALL BE DETERMINED BY A PROFESSIONAL ENGINEER USING APPROPRIATE WIND SPEED AND DESIGN CRITERIA. THIS DOOR MAY BE USED WHERE THE DESIGN LOAD MEETS OR EXCEEDS THE DESIGN LOAD FOR THE BUILDING OPENING.
- SUPERIMPOSED LOADS ON THE JAMBS FROM THIS DOOR ARE DESIGNED AS Vx AND Vy HEREIN. CONTRACTORS SHALL HAVE BUILDING ENGINEER VERIFY ADEQUACY OF BUILDING STRUCTURE TO RESIST SUPERIMPOSED LOADS Vx, Vy
- ALL WELDING SHALL BE PERFORMED BY QUALIFIED WELDERS IN ACCORDANCE WITH A.W.S. SPECIFICATIONS, LATEST EDITION. ALL WELDING ELECTRODES SHALL CONFORM TO A.W.S. A5.1 GRADE E-70.
- DESIGN BASED ON CERTIFIED TESTING LABORATORIES, INC., TEST REPORT NO. CTLA1959W1 (STEEL BOTTOM BAR) DATED: MAY 6, 2009
NO. CTLA1959W (ALUMINUM BOTTOM BAR) DATED: MAY 6, 2009
- ANCHOR NOTES:
A. EMBEDMENT LENGTH DOES NOT INCLUDE STUCCO FINISH.
B. ANCHORS SHALL BE INSTALLED IN ACCORDANCE WITH MANUFACTURER'S SPECIFICATIONS.
- DOOR OPERATION TYPE TO BE PUSH-UP, HAND CHAIN, HAND CRANK OR ELECTRIC.
- GUIDE TO JAMB ATTACHMENT FASTENERS IN OPENING AREA BEGIN 4" MIN./6" MAX. FROM FLOOR AND END 4" BELOW TOP OF WALL OPENING.
- TEST DOOR WALL OPENING SIZE: 16'-4" x 10'-0".
- WINDLOCKS ATTACHED TO EVERY OTHER SLAT BEGINNING AT BOTTOM SLAT (ALTERNATING).

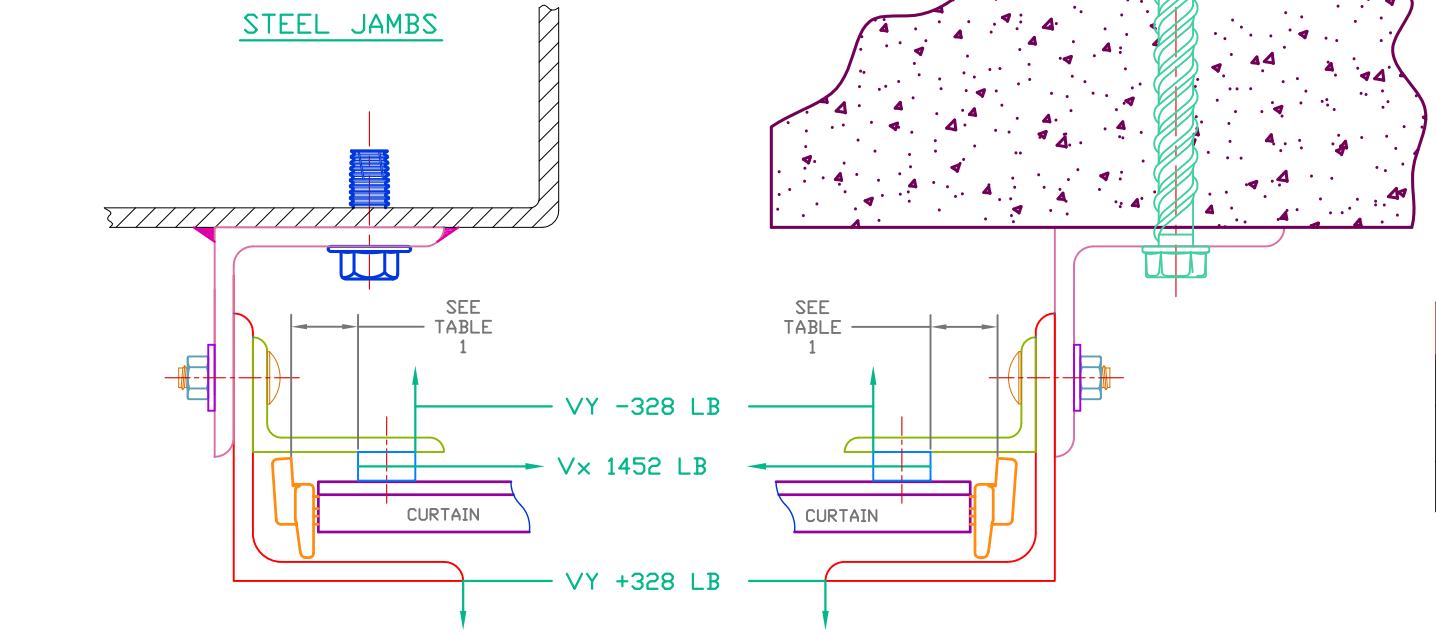


TABLE 1

OPENING WIDTHS	WINDLOCK SLIP
≤ 11'-4"	3/8"
>11'-4", ≤ 20'-4"	5/8"
>20'-4" ≤ 24'-4"	7/8"

CERTIFIED WIND LOAD RATED
SERIES SD10 F8265 ANGLE GUIDES DOOR ASSEMBLY
MAX. SIZE 24'-4" X 30'-0"

JANUS INTERNATIONAL CORPORATION
134 Janus International Blvd. Temple, GA 30179
770-562-2850/Fax 770-562-1991
© 2009 Janus International Corporation All Rights Reserved

UNLESS OTHERWISE SPECIFIED, DIMENSIONS ARE IN INCHES AND TOLERANCES ARE

ANGLES	HOLE DIAMETER
± 0° 30'	UNDER .251
DECIMAL	+.004
.XX ±.03	-.003
.XXX ±.005	.251 TO .500
FRACTIONS	+.006
OVER .500	-.003
± 1/16	+.008
	-.003

APPROVALS	DATE	APPROVALS	DATE
DRAWN BECKY NELSON	4-28-09	APPROVED CURT SCHROEDER	4-29-09
CHECKED CURT SCHROEDER	4-29-09		

THESE CONFIDENTIAL DOCUMENTS SUBMITTED BY JANUS CONTAIN INFORMATION OF A PROPRIETARY NATURE AND MAY NOT BE REPRODUCED OR USED TO MANUFACTURE ANYTHING IN PART OR IN WHOLE FOR ANY PURPOSE OTHER THAN THAT WHICH IS NECESSARY FOR PREPARATION OF BIDS OR ENGINEERING WITHOUT THE EXPRESS PERMISSION OF JANUS WHICH MAY RECALL DOCUMENTS AT ANY TIME.

PART NUMBER	NA	DRAWING NUMBER	RS9003
MATERIAL	NA	APPLIED FINISH	NA
UNIT OF MEASURE	NA	SCALE	NONE
SIZE	B	SHEET	2
		OF	2
		REV	—