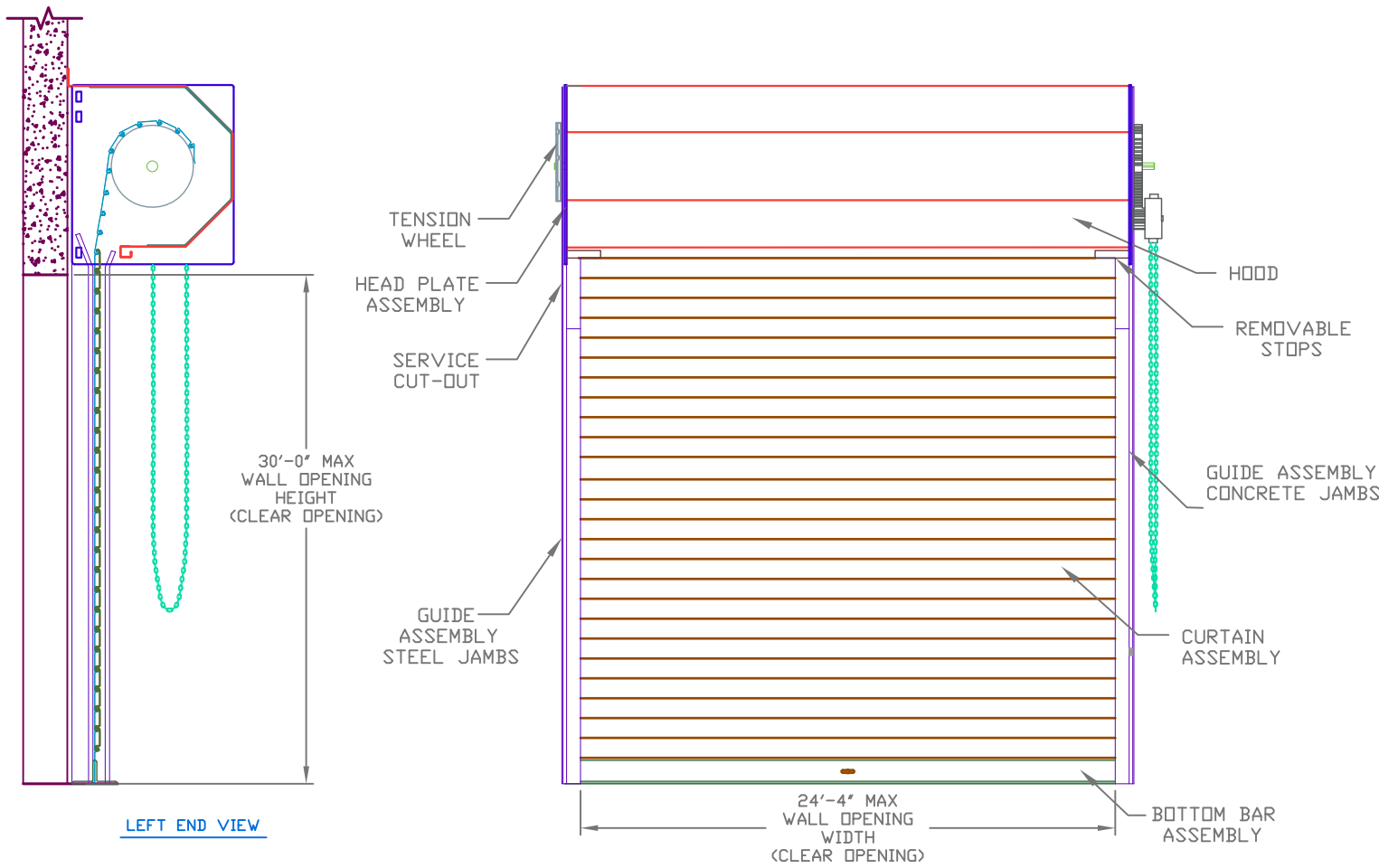


REVISIONS			
REV	DESCRIPTION	DATE	APPROVAL
—	DRAWING RELEASE	2-9-10	DM



ALLOWABLE TRANSVERSE DESIGN WIND LOADS (PSF)  
FOR 24 GAUGE SLAT/24 GAUGE BACK COVER (TESTED GAUGE)

MAX DOOR WIDTH	MAX DOOR HEIGHT (FT)	DESIGN WIND LOADS (PSF)	MAX DOOR WIDTH	MAX DOOR HEIGHT (FT)	DESIGN WIND LOADS (PSF)
6'-4"	30	+/- 72.1	16'-4"	30	+/- 50.0
7'-4"	30	+/- 72.1	17'-4"	30	+/- 45.1
8'-4"	30	+/- 72.1	18'-4"	30	+/- 41.0
9'-4"	30	+/- 72.1	19'-4"	30	+/- 37.4
10'-4"	30	+/- 72.1	20'-4"	30	+/- 34.4
11'-4"	30	+/- 72.1	21'-4"	30	+/- 37.4
12'-4"	30	+/- 72.1	22'-4"	30	+/- 34.7
13'-4"	30	+/- 72.1	23'-4"	30	+/- 32.3
14'-4"	30	+/- 63.1	24'-4"	30	+/- 30.2
15'-4"	30	+/- 55.9			

ALLOWABLE TRANSVERSE DESIGN WIND LOADS (PSF)  
FOR 22 GAUGE SLAT/24 GAUGE BACK COVER

MAX DOOR WIDTH	MAX DOOR HEIGHT (FT)	DESIGN WIND LOADS (PSF)	MAX DOOR WIDTH	MAX DOOR HEIGHT (FT)	DESIGN WIND LOADS (PSF)
6'-4"	30	+/- 74.9	16'-4"	30	+/- 51.4
7'-4"	30	+/- 74.9	17'-4"	30	+/- 46.3
8'-4"	30	+/- 74.9	18'-4"	30	+/- 41.9
9'-4"	30	+/- 74.9	19'-4"	30	+/- 38.2
10'-4"	30	+/- 74.9	20'-4"	30	+/- 35.1
11'-4"	30	+/- 74.9	21'-4"	30	+/- 38.0
12'-4"	30	+/- 74.9	22'-4"	30	+/- 35.2
13'-4"	30	+/- 74.9	23'-4"	30	+/- 32.8
14'-4"	30	+/- 65.3	24'-4"	30	+/- 30.6
15'-4"	30	+/- 57.6			

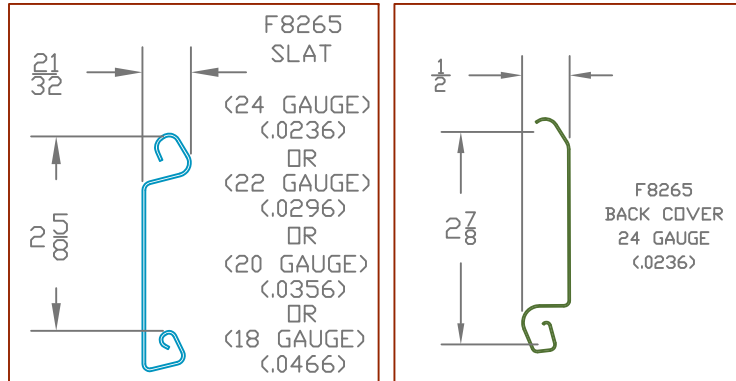
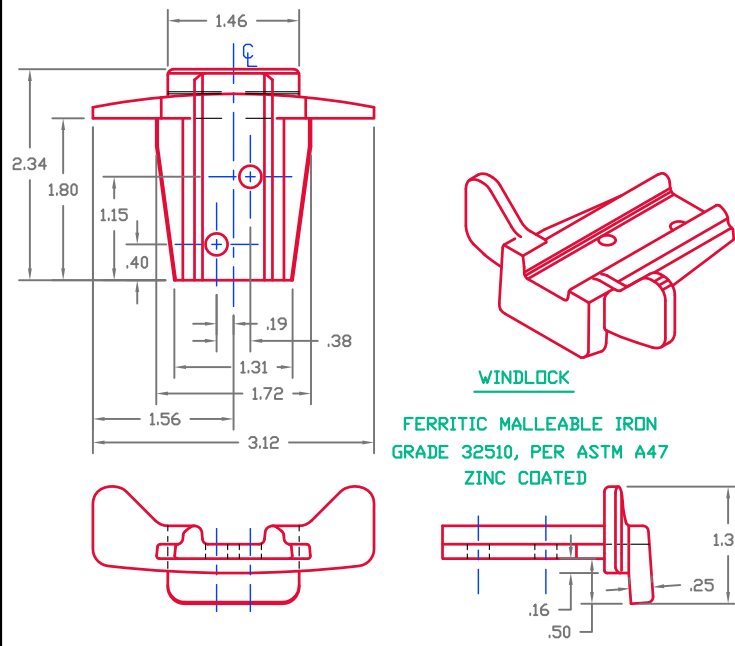
ALLOWABLE TRANSVERSE DESIGN WIND LOADS (PSF)  
FOR 20 GAUGE SLAT/24 GAUGE BACK COVER

MAX DOOR WIDTH	MAX DOOR HEIGHT (FT)	DESIGN WIND LOADS (PSF)	MAX DOOR WIDTH	MAX DOOR HEIGHT (FT)	DESIGN WIND LOADS (PSF)
6'-4"	30	+/- 76.9	16'-4"	30	+/- 52.4
7'-4"	30	+/- 76.9	17'-4"	30	+/- 47.1
8'-4"	30	+/- 76.9	18'-4"	30	+/- 42.6
9'-4"	30	+/- 76.9	19'-4"	30	+/- 38.8
10'-4"	30	+/- 76.9	20'-4"	30	+/- 35.5
11'-4"	30	+/- 76.9	21'-4"	30	+/- 38.5
12'-4"	30	+/- 76.9	22'-4"	30	+/- 35.6
13'-4"	30	+/- 76.9	23'-4"	30	+/- 33.1
14'-4"	30	+/- 66.9	24'-4"	30	+/- 30.9
15'-4"	30	+/- 58.9			

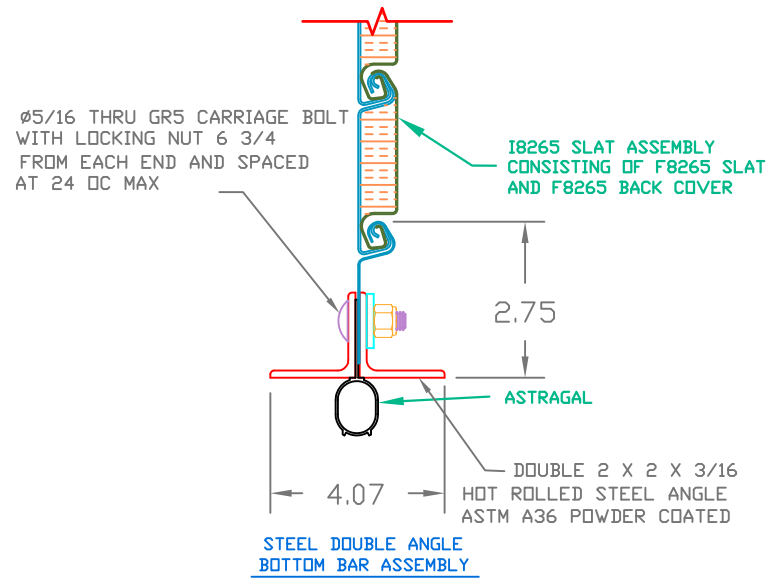
ALLOWABLE TRANSVERSE DESIGN WIND LOADS (PSF)  
FOR 18 GAUGE SLAT/24 GAUGE BACK COVER

MAX DOOR WIDTH	MAX DOOR HEIGHT (FT)	DESIGN WIND LOADS (PSF)	MAX DOOR WIDTH	MAX DOOR HEIGHT (FT)	DESIGN WIND LOADS (PSF)
6'-4"	30	+/- 79.7	16'-4"	30	+/- 53.8
7'-4"	30	+/- 79.7	17'-4"	30	+/- 48.2
8'-4"	30	+/- 79.7	18'-4"	30	+/- 43.5
9'-4"	30	+/- 79.7	19'-4"	30	+/- 39.6
10'-4"	30	+/- 79.7	20'-4"	30	+/- 36.2
11'-4"	30	+/- 79.7	21'-4"	30	+/- 39.2
12'-4"	30	+/- 79.7	22'-4"	30	+/- 36.2
13'-4"	30	+/- 79.7	23'-4"	30	+/- 33.6
14'-4"	30	+/- 69.1	24'-4"	30	+/- 31.3
15'-4"	30	+/- 60.6			

INSIDE ELEVATION  
RIGHT HAND OPERATION SHOWN - LEFT HAND OPPOSITE



I8265 SLAT ASSEMBLY  
ASTM A653 GR 40 ZINC COATED STEEL  
PRE-PAINTED WITH FULL COAT OF PRIMER  
AND BAKED SILICONIZED PLOYESTER FINISH COAT



SEE SHEET 2 FOR NOTES

CERTIFIED WIND LOAD RATED  
SERIES ID25 ANGLE GUIDES ROLL-UP DOOR ASSEMBLY  
I8265 INSULATED SLAT ASSEMBLY  
MAX. SIZE 24'-4" X 30'-0"

**JANUS INTERNATIONAL CORPORATION®**  
134 Janus International Blvd. Temple, GA 30179  
770-562-2850/Fax 770-562-1991  
© 2010 Janus International Corporation All Rights Reserved

APPROVALS		DATE	APPROVALS		DATE	PART NUMBER	DRAWING NUMBER
DRAWN	BECKY NELSON	1-22-10	APPROVED	DON MILLS	2-9-10	NA	RS9008
CHECKED	DON MILLS	2-9-10				NA	NA
THESE CONFIDENTIAL DOCUMENTS SUBMITTED BY JANUS CONTAIN INFORMATION OF A PROPRIETARY NATURE AND MAY NOT BE REPRODUCED OR USED TO MANUFACTURE ANYTHING IN PART OR IN WHOLE FOR ANY PURPOSE OTHER THAN THAT WHICH IS NECESSARY FOR PREPARATION OF BIDS OR ENGINEERING WITHOUT THE EXPRESS PERMISSION OF JANUS WHICH MAY RECALL DOCUMENTS AT ANY TIME.						UNIT OF MEASURE	SCALE
						NA	NONE
						SIZE	SHEET OF
						B	1 2
						SCALE	REV
						NONE	—

UNLESS OTHERWISE SPECIFIED, DIMENSIONS ARE IN INCHES AND TOLERANCES ARE:  
ANGLES: ± 0° 30'  
DECIMAL: UNDER .251 +.004 -0.003  
FRACTIONS: .251 TO .500 +.006 -0.003  
OVER .500 +.008 -0.003

