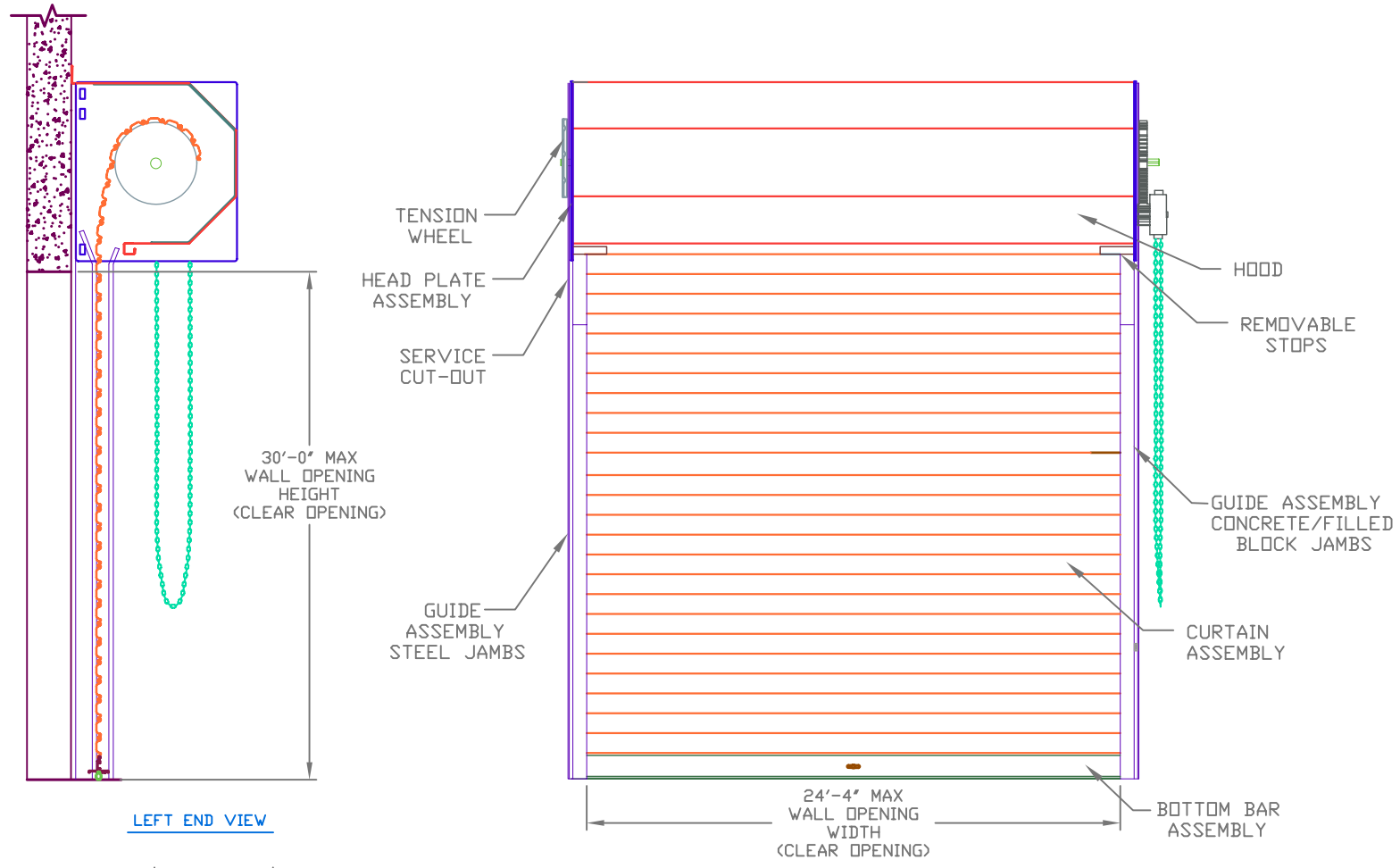


REVISIONS			
REV	DESCRIPTION	DATE	APPROVAL

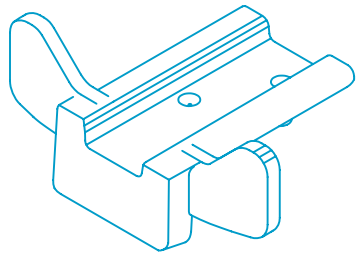
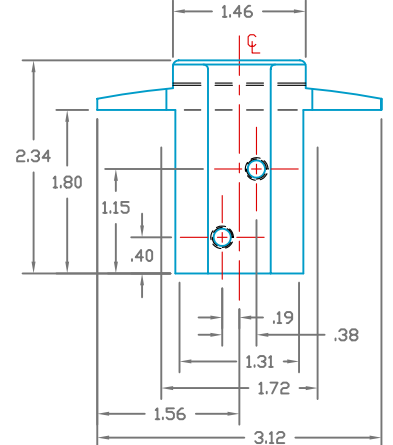


ALLOWABLE TRANSVERSE DESIGN WIND LOADS (PSF) FOR 22 GAUGE CURTAIN (TESTED SLAT GAUGE)

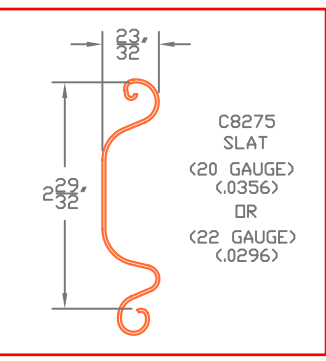
MAX DOOR WIDTH	MAX DOOR HEIGHT (FT)	DESIGN WIND LOADS (PSF)	MAX DOOR WIDTH	MAX DOOR HEIGHT (FT)	DESIGN WIND LOADS (PSF)
6'-4"	30	+/- 58.1	16'-4"	30	+/- 40.0
7'-4"	30	+/- 58.1	17'-4"	30	+/- 36.0
8'-4"	30	+/- 58.1	18'-4"	30	+/- 32.7
9'-4"	30	+/- 58.1	19'-4"	30	+/- 29.8
10'-4"	30	+/- 58.1	20'-4"	30	+/- 27.4
11'-4"	30	+/- 58.1	21'-4"	30	+/- 29.7
12'-4"	30	+/- 58.1	22'-4"	30	+/- 27.5
13'-4"	30	+/- 58.1	23'-4"	30	+/- 25.6
14'-4"	30	+/- 50.7	24'-4"	30	+/- 23.9
15'-4"	30	+/- 44.8			

ALLOWABLE TRANSVERSE DESIGN WIND LOADS (PSF) FOR 20 GAUGE CURTAIN

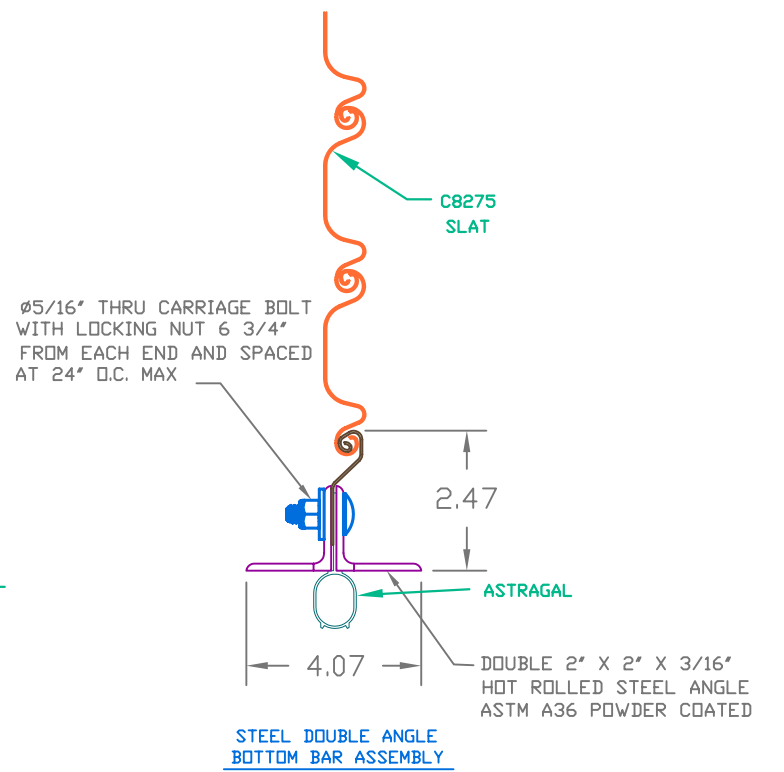
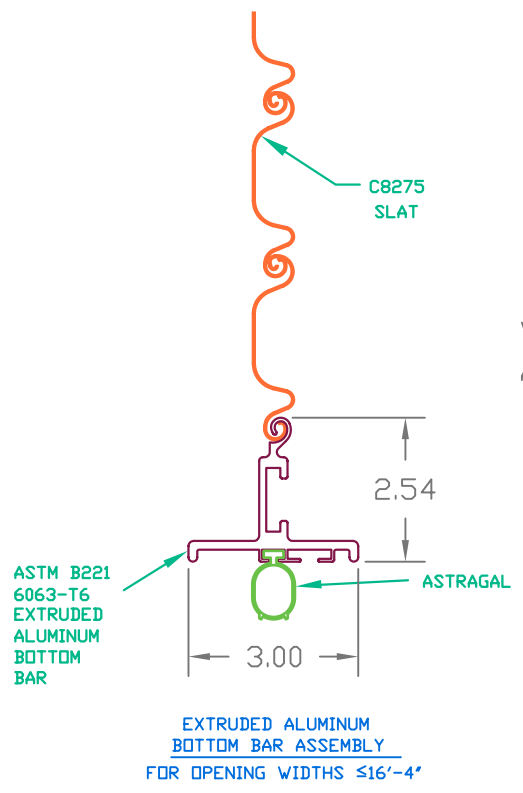
MAX DOOR WIDTH	MAX DOOR HEIGHT (FT)	DESIGN WIND LOADS (PSF)	MAX DOOR WIDTH	MAX DOOR HEIGHT (FT)	DESIGN WIND LOADS (PSF)
6'-4"	30	+/- 60.2	16'-4"	30	+/- 41.0
7'-4"	30	+/- 60.2	17'-4"	30	+/- 36.8
8'-4"	30	+/- 60.2	18'-4"	30	+/- 33.3
9'-4"	30	+/- 60.2	19'-4"	30	+/- 30.4
10'-4"	30	+/- 60.2	20'-4"	30	+/- 27.8
11'-4"	30	+/- 60.2	21'-4"	30	+/- 30.2
12'-4"	30	+/- 60.2	22'-4"	30	+/- 27.9
13'-4"	30	+/- 60.2	23'-4"	30	+/- 25.9
14'-4"	30	+/- 52.3	24'-4"	30	+/- 24.2
15'-4"	30	+/- 46.0			



WINDLOCK
FERRITIC MALLEABLE IRON
GRADE 32510, PER ASTM A47
ZINC COATED



ASTM A653 GR 40 ZINC COATED STEEL
PRE-PAINTED WITH FULL COAT OF PRIMER AND BAKED SILICONIZED POLYESTER FINISH COAT



SEE SHEET 2 FOR NOTES

CERTIFIED WIND LOAD RATED
SERIES SD10 C8275 ANGLE GUIDES DOOR ASSEMBLY
MAX. SIZE 24'-4" X 30'-0"

JANUS INTERNATIONAL CORPORATION®
134 Janus International Blvd. Temple, GA 30179
770-562-2850/Fax 770-562-1991
© 2009 Janus International Corporation All Rights Reserved

UNLESS OTHERWISE SPECIFIED, DIMENSIONS ARE IN INCHES AND TOLERANCES ARE

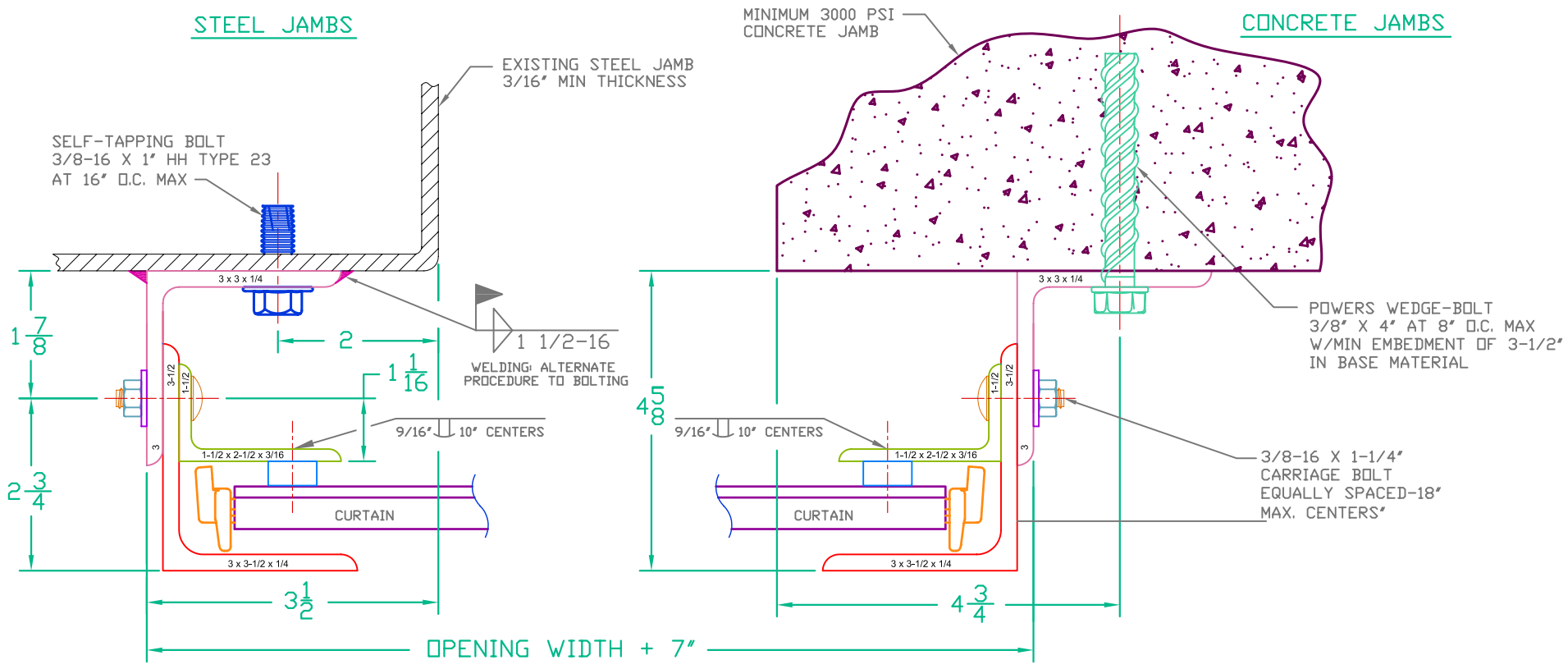
ANGLES	HOLE DIAMETERS	
± 0° 30' DECIMAL	UNDER .251	+0.04 -0.03
.XX ±.03 .XXX ±.005	.251 TO .500	+0.06 -0.03
FRACTIONS	OVER .500	+0.08 -0.03
± 1/16		

APPROVALS	DATE	APPROVALS	DATE
DRAWN BECKY NELSON	4-28-09	APPROVED CURT SCHROEDER	6-15-09
CHECKED CURT SCHROEDER	6-15-09		

THESE CONFIDENTIAL DOCUMENTS SUBMITTED BY JANUS CONTAIN INFORMATION OF A PROPRIETARY NATURE AND MAY NOT BE REPRODUCED OR USED TO MANUFACTURE ANYTHING IN PART OR IN WHOLE FOR ANY PURPOSE OTHER THAN THAT WHICH IS NECESSARY FOR PREPARATION OF BIDS OR ENGINEERING WITHOUT THE EXPRESS PERMISSION OF JANUS WHICH MAY RECALL DOCUMENTS AT ANY TIME.

PART NUMBER NA	DRAWING NUMBER RS9004
MATERIAL NA	APPLIED FINISH NA
UNIT OF MEASURE NA	SIZE B
	SCALE NONE
	SHEET OF 1 2
	REV —

REVISIONS			
REV	DESCRIPTION	DATE	APPROVAL



GENERAL NOTES

1. THIS ROLLING DOOR SYSTEM IS DESIGNED IN ACCORDANCE WITH THE FLORIDA BUILDING CODE AND THE INTERNATIONAL BUILDING CODE. THE REQUIRED DESIGN WIND PRESSURES FOR A DOOR IN ANY PARTICULAR BUILDING SHALL BE DETERMINED IN ACCORDANCE WITH SECTION 1609 OF THE FBC. IN CODE JURISDICTIONS OUTSIDE OF FLORIDA, REQUIRED DESIGN WIND PRESSURES MAY BE DETERMINED IN ACCORDANCE WITH SECTION 1609 OF THE IBC OR WITH THE LOCAL BUILDING CODE IN EFFECT FOR THE SPECIFIC LOCATION.
2. THIS ROLLING DOOR HAS BEEN TESTED IN ACCORDANCE WITH ASTM E-330 AND ANSI/DASMA 108 TO SAFELY RESIST A POSITIVE OR NEGATIVE WIND LOAD AS NOTED BELOW. A TEST LOAD OF 1.5 X DESIGN LOAD HAS BEEN USED.

DESIGN LOAD = $\begin{matrix} +40 \\ -40 \end{matrix}$ PSF 22 GA CURTAIN
3. WIND LOADS FOR BUILDING OPENINGS SHALL BE DETERMINED BY A PROFESSIONAL ENGINEER USING APPROPRIATE WIND SPEED AND DESIGN CRITERIA. THIS DOOR MAY BE USED WHERE THE DESIGN LOAD MEETS OR EXCEEDS THE DESIGN LOAD FOR THE BUILDING OPENING.
4. SUPERIMPOSED LOADS ON THE JAMBS FROM THIS DOOR ARE DESIGNED AS V_x AND V_y HEREIN. CONTRACTORS SHALL HAVE BUILDING ENGINEER VERIFY ADEQUACY OF BUILDING STRUCTURE TO RESIST SUPERIMPOSED LOADS V_x , V_y AND BRACKET LOADS SHOWN.
5. ALL WELDING SHALL BE PERFORMED BY QUALIFIED WELDERS IN ACCORDANCE WITH A.W.S. SPECIFICATIONS, LATEST EDITION. ALL WELDING ELECTRODES SHALL CONFORM TO A.W.S. A5.1 GRADE E-70.
6. ALL BOLTS AND WASHERS SHALL BE GALVANIZED OR STAINLESS STEEL WITH A MINIMUM TENSILE STRENGTH OF 60 KSI.
7. DESIGN BASED ON CERTIFIED TESTING LABORATORIES, INC., TEST REPORT NO. CTLA1959W-3 DATED: JUNE 5, 2009
8. ANCHOR NOTES:
A. EMBEDMENT LENGTH DOES NOT INCLUDE STUCCO FINISH.
B. ANCHORS SHALL BE INSTALLED IN ACCORDANCE WITH MANUFACTURER'S SPECIFICATIONS.
9. DOOR OPERATION TYPE TO BE PUSH-UP, HAND CHAIN, HAND CRANK OR ELECTRIC.
10. GUIDE TO JAMB ATTACHMENT FASTENERS IN OPENING AREA BEGIN 4' MIN./6' MAX. FROM FLOOR AND END 4' BELOW TOP OF WALL OPENING.
11. TEST DOOR WALL OPENING SIZE: 16'-4" X 10'-0".
12. WINDLOCKS ATTACHED TO EVERY OTHER SLAT BEGINNING AT BOTTOM SLAT (ALTERNATING). WINDLOCKS FASTENED TO SLATS UTILIZING 2 SWAGED MALLEABLE CAST STUDS, 0.24" BASE DIAMETER.

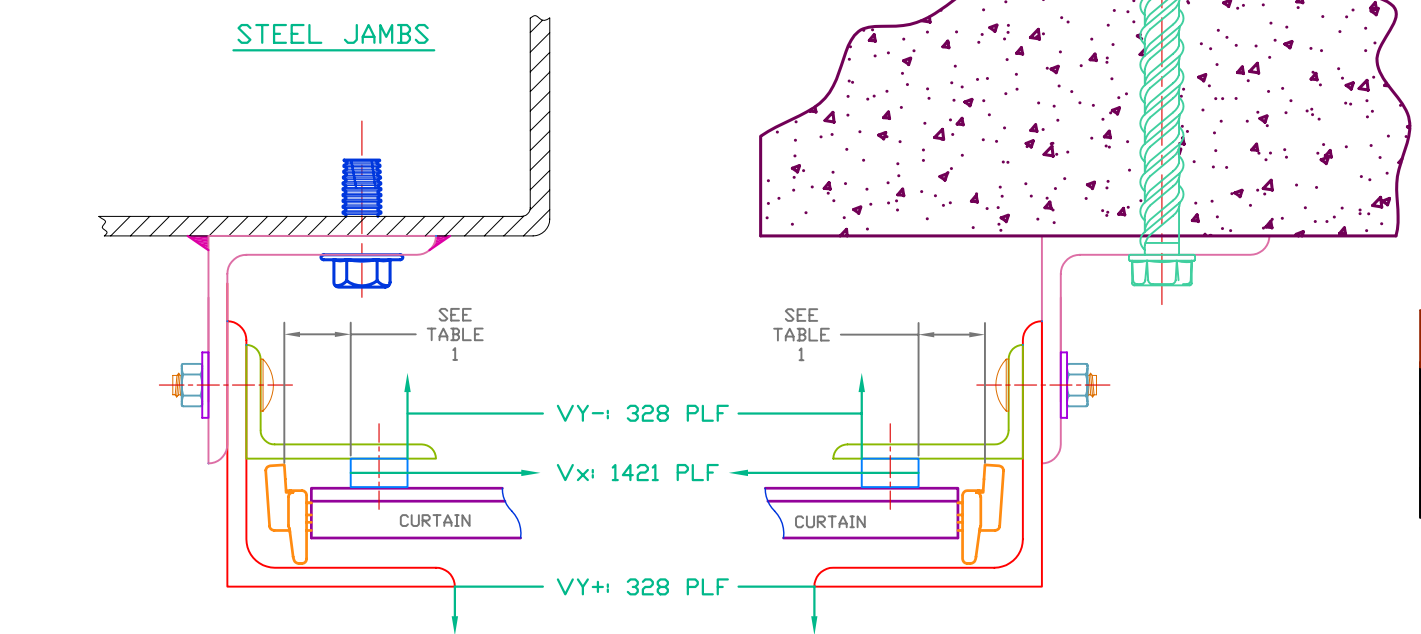


TABLE 1

OPENING WIDTHS	WINDLOCK SLIP
≤ 11'-4"	3/8"
>11'-4", ≤ 20'-4"	5/8"
>20'-4" ≤ 24'-4"	7/8"

SUPERIMPOSED LOAD DIAGRAM

CERTIFIED WIND LOAD RATED
 SERIES SD10 C8275 ANGLE GUIDES DOOR ASSEMBLY
 MAX. SIZE 24'-4" X 30'-0"

UNLESS OTHERWISE SPECIFIED, DIMENSIONS ARE IN INCHES AND TOLERANCES ARE

ANGLES	HOLE DIAMETERS
± 0° 30'	UNDER .251
DECIMAL	+ .004
.XX ± .03	- .003
.XXX ± .005	+ .006
FRACTIONS	.251 TO .500
± 1/16	- .003
	OVER .500
	+ .008
	- .003

APPROVALS	DATE	APPROVALS	DATE	PART NUMBER	DRAWING NUMBER
DRAWN BECKY NELSON	4-28-09	APPROVED CURT SCHROEDER	6-15-09	NA	RS9004
CHECKED CURT SCHROEDER	6-15-09			MATERIAL NA	APPLIED FINISH NA
THESE CONFIDENTIAL DOCUMENTS SUBMITTED BY JANUS CONTAIN INFORMATION OF A PROPRIETARY NATURE AND MAY NOT BE REPRODUCED OR USED TO MANUFACTURE ANYTHING IN PART OR IN WHOLE FOR ANY PURPOSE OTHER THAN THAT WHICH IS NECESSARY FOR PREPARATION OF BIDS OR ENGINEERING WITHOUT THE EXPRESS PERMISSION OF JANUS WHICH MAY RECALL DOCUMENTS AT ANY TIME.				UNIT OF MEASURE NA	SIZE B
		SCALE NONE	SHEET 2	OF 2	REV —



JANUS INTERNATIONAL CORPORATION®
 134 Janus International Blvd. Temple, GA 30179
 770-562-2850/Fax 770-562-1991
 © 2009 Janus International Corporation All Rights Reserved