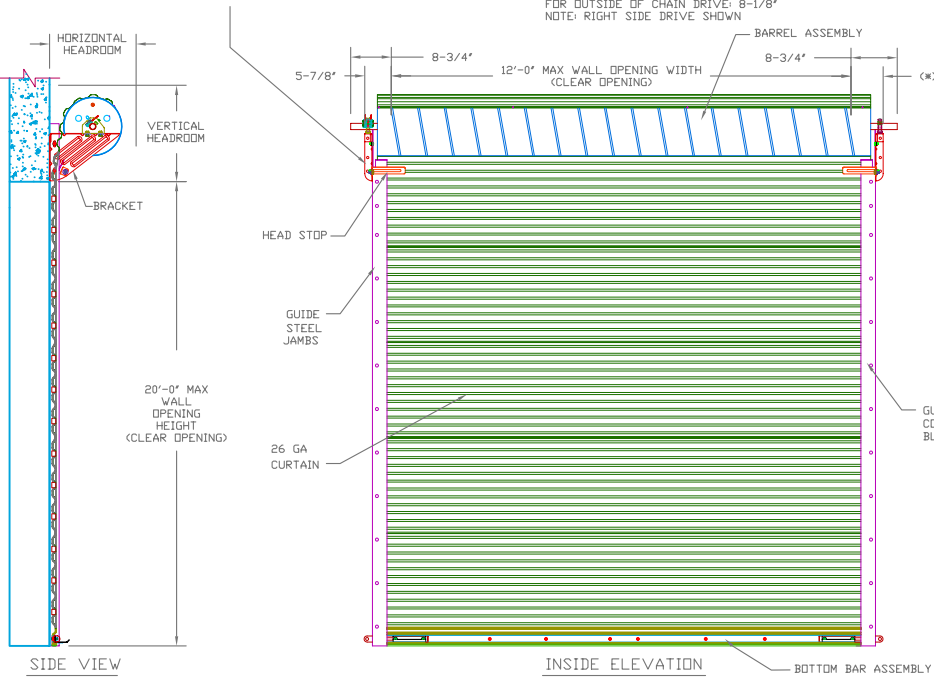


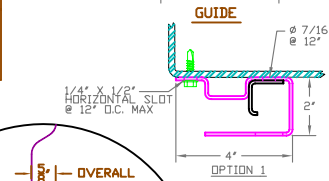
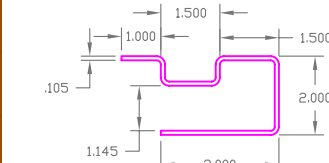
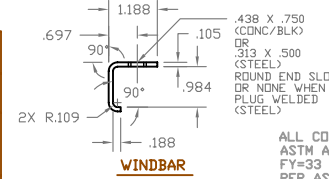
**BRACKET ATTACHMENT**  
 CONCRETE/FILLED BLOCK: POWERS WEDGE-BOLT, 3/8 X 1-3/4" LONG  
 STEEL: HEX BOLT, GR.5, 3/8-16 X 1-1/4" LONG

(\*) FOR PUSH-UP OPERATION: 5-7/8"  
 FOR HAND CHAIN OPERATION: 6-5/8"  
 FOR ELECTRIC OPERATION: 7-3/8"  
 FOR OUTSIDE OF CHAIN DRIVE: 8-1/8"  
 NOTE: RIGHT SIDE DRIVE SHOWN

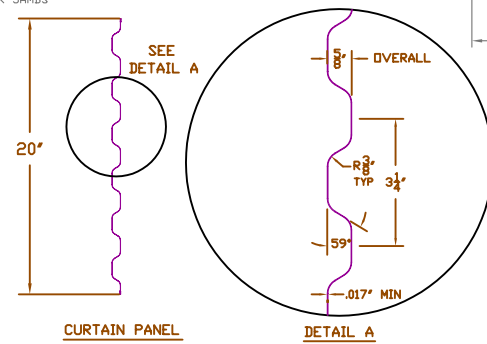
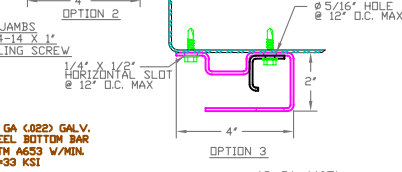
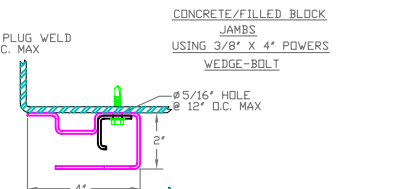
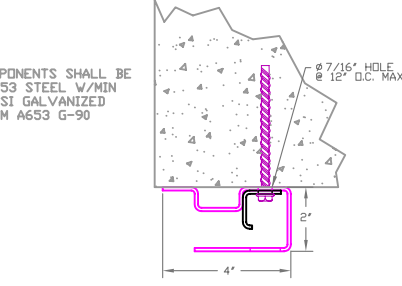


**HEADROOM REQUIRED**

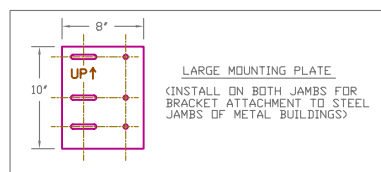
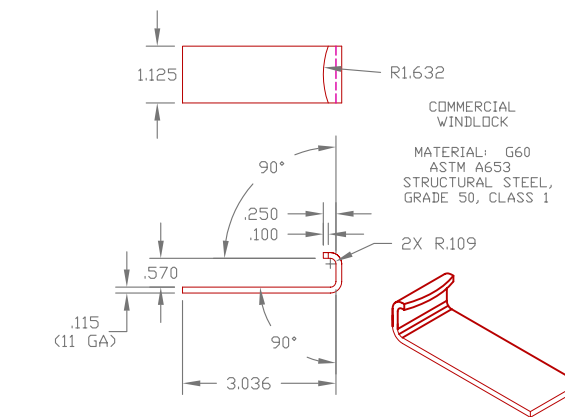
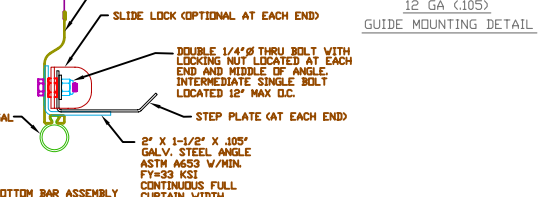
OPENING HEIGHT	VERTICAL HEADROOM	HORIZONTAL HEADROOM
THRU 8'-0"	17'	19'
OVER 8'-0" THRU 10'-0"	19'	21'
OVER 10'-0" THRU 14'-0"	20'	22'
OVER 14'-0" THRU 16'-0"	21'	23'
OVER 16'-0" THRU 18'-0"	22'	24'
OVER 18'-0" THRU 20'-0"	23'	25'



REVISIONS			
REV	DESCRIPTION	DATE	APPROVAL
—	DRAWING RELEASE	1-31-03	DM
A	GUIDE ATTACH AT TOE	11-13-03	DM
B	ADD GUIDE OPTION 3	4-13-04	DM



**ASTM A653 GR 80 ZINC COATED STEEL**  
 PRE-PAINTED WITH FULL COAT OF PRIMER AND BAKED SILICONIZED POLYESTER FINISH COAT  
**26 GA CURTAIN DETAIL**



THESE CONFIDENTIAL DOCUMENTS SUBMITTED BY JANUS CONTAIN INFORMATION OF A PROPRIETARY NATURE AND MAY NOT BE REPRODUCED OR USED TO MANUFACTURE ANYTHING IN PART OR IN WHOLE FOR ANY PURPOSE OTHER THAN THAT WHICH IS NECESSARY FOR PREPARATION OF BIDS OF ENGINEERING WITHOUT THE EXPRESS PERMISSION OF JANUS WHICH MAY RECALL DOCUMENTS AT ANY TIME.

UNLESS OTHERWISE SPECIFIED DIMENSIONS ARE IN INCHES AND TOLERANCES ARE:

DECIMAL	FRACTIONS	ANGLES	HOLE DIAMETERS
.XX ±.03	± 1/16	± 0° 30'	UNDER .251 +.004 -.003
.XXX ±.005			.251 to .500 +.006 -.003
			OVER .500 +.008 -.003

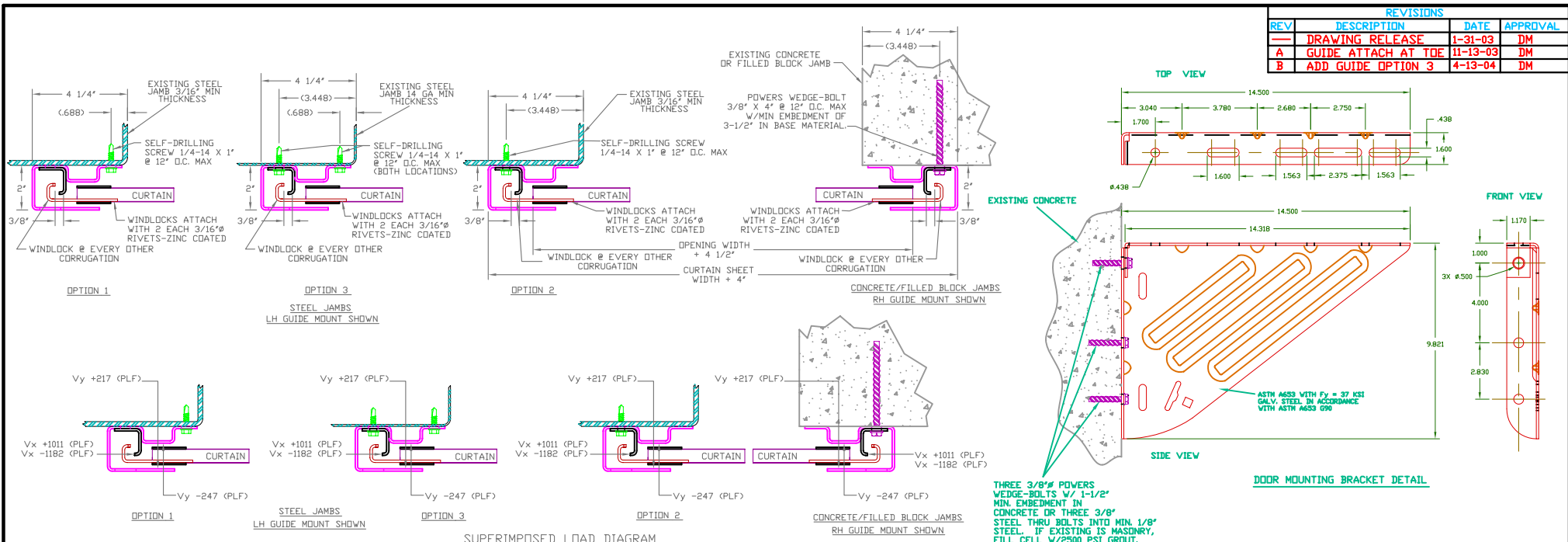
PART NUMBER:	
MATERIAL:	
APPLIED FINISH:	
UNIT OF MEASURE:	
APPROVALS:	DATE:
DRAWN: BECKY NELSON	1-31-03
CHECKED: DON MILLS	1-31-03
APPROVED: DON MILLS	1-31-03

**JANUS INTERNATIONAL CORPORATION**  
 134 EAST LUKE ROAD TEMPLE, GA 30179-4435  
 770-562-2850/Fax 770-562-2264  
 © 2005 Janus International Corporation All Rights Reserved

**CERTIFIED WIND LOAD RATED**  
**26 GA SERIES 3100 DOOR ASSEMBLY**  
 MAX. SIZE 12'-0" X 20'-0"

SIZE: **B** DRAWING NUMBER: **T1004** REV: **B**  
 SCALE: NONE SHEET: 1 OF 2

SEE SHEET 2 FOR NOTES



REVISIONS			
REV	DESCRIPTION	DATE	APPROVAL
—	DRAWING RELEASE	1-31-03	DM
A	GUIDE ATTACH AT TOE	11-13-03	DM
B	ADD GUIDE OPTION 3	4-13-04	DM

**GENERAL NOTES**

- THIS ROLL-UP DOOR SYSTEM IS DESIGNED IN ACCORDANCE WITH THE STANDARD BUILDING CODE 1999 EDITION, ASCE 7-98, FLORIDA BUILDING CODE 2004 AND INTERNATIONAL BUILDING CODE 2000.
- THIS ROLL-UP DOOR HAS BEEN TESTED IN ACCORDANCE WITH ASTM E-330 TO SAFELY RESIST A POSITIVE OR NEGATIVE WIND LOAD AS NOTED BELOW. A TEST LOAD OF 1.5 X DESIGN LOAD HAS BEEN USED.  
  
DESIGN LOAD = +36.0 PSF  
-41.0
- WIND LOADS FOR BUILDING OPENINGS SHALL BE DETERMINED BY A PROFESSIONAL ENGINEER USING APPROPRIATE WIND SPEED AND DESIGN CRITERIA. THIS DOOR MAY BE USED WHERE THE DESIGN LOAD MEETS OR EXCEEDS THE DESIGN LOAD FOR THE BUILDING OPENING.
- SUPERIMPOSED LOADS ON THE JAMBS FROM THIS DOOR ARE DESIGNED AS Vx AND Vy HEREIN. CONTRACTORS SHALL HAVE BUILDING ENGINEER VERIFY ADEQUACY OF BUILDING STRUCTURE TO RESIST SUPERIMPOSED LOADS Vx, Vy AND BRACKET LOADS SHOWN.
- ALL WELDING SHALL BE PERFORMED BY QUALIFIED WELDERS IN ACCORDANCE WITH A.W.S. SPECIFICATIONS, LATEST EDITION. ALL WELDING ELECTRODES SHALL CONFORM TO A.W.S. A51 GRADE E-70.
- DOORS SHALL BE PROVIDED WITH LOCK MECHANISMS AT THE OPTION OF THE OWNER.
- ALL BOLTS AND WASHERS SHALL BE GALVANIZED OR STAINLESS STEEL WITH A MINIMUM TENSILE STRENGTH OF 60 KSI.

**SUPERIMPOSED LOAD DIAGRAM**

- DESIGN BASED ON CERTIFIED TESTING LABORATORIES, INC., TEST REPORTS NO. CTLA-1024W FOR THROUGH GUIDE ATTACHMENT TO JAMB AND NO. CTLA-1194W FOR TOE OF GUIDE ATTACHMENT TO JAMB.
- ANCHOR NOTES:  
A. EMBEDMENT LENGTH DOES NOT INCLUDE STUCCO FINISH.  
B. FOR HOLLOW MASONRY, FILL ALL CELLS @ ANCHOR WITH 2500 PSI GROUT.  
C. ANCHORS SHALL BE INSTALLED IN ACCORDANCE WITH MANUFACTURER'S SPECIFICATIONS.
- DOOR OPERATION TYPE TO BE PUSH-UP, HAND CHAIN OR ELECTRIC.

THREE 3/8" POWERS WEDGE-BOLTS W/ 1-1/2" MIN. EMBEDMENT IN CONCRETE OR THREE 3/8" STEEL THRU BOLTS INTO MIN. 1/8" STEEL. IF EXISTING IS MASONRY, FILL CELL W/2500 PSI GROUT.

THESE CONFIDENTIAL DOCUMENTS SUBMITTED BY JANUS CONTAIN INFORMATION OF A PROPRIETARY NATURE AND MAY NOT BE REPRODUCED OR USED TO MANUFACTURE ANYTHING IN PART OR IN WHOLE FOR ANY PURPOSE OTHER THAN THAT WHICH IS NECESSARY FOR PREPARATION OF BIDS OF ENGINEERING WITHOUT THE EXPRESS PERMISSION OF JANUS WHICH MAY RECALL DOCUMENTS AT ANY TIME.

UNLESS OTHERWISE SPECIFIED DIMENSIONS ARE IN INCHES AND TOLERANCES ARE:

DECIMAL	FRACTIONS	ANGLES	HOLE DIAMETERS
.XX ±.03	± 1/16	± 0° 30'	UNDER .251 +.004 -.003
.XXX ±.005			.251 to .500 +.006 -.003
			OVER .500 +.008 -.003

PART NUMBER:	
MATERIAL:	
APPLIED FINISH:	
UNIT OF MEASURE:	
APPROVALS	DATE
DRAWN: BECKY NELSON	1-31-03
CHECKED: DON MILLS	1-31-03
APPROVED: DON MILLS	1-31-03

**JANUS INTERNATIONAL CORPORATION**  
 134 EAST LUKE ROAD TEMPLE, GA 30179-4435  
 770-562-2850/Fax 770-562-2264  
 © 2005 Janus International Corporation All Rights Reserved

**CERTIFIED WIND LOAD RATED**  
 26 GA SERIES 3100 DOOR ASSEMBLY  
 MAX. SIZE 12'-0" X 20'-0"

SIZE: <b>B</b>	DRAWING NUMBER: <b>T1004</b>	REV: <b>B</b>
SCALE: NONE	SHEET: 2	OF: 2