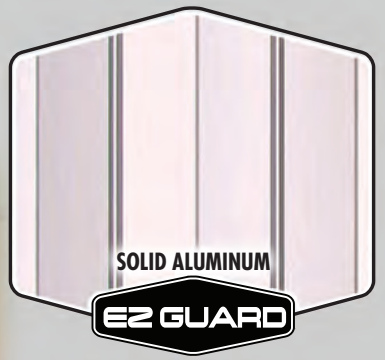


# EZ CLOSURE

# Storefront Security is EZ



**EZ VENT**



SOLID ALUMINUM  
**EZ GUARD**



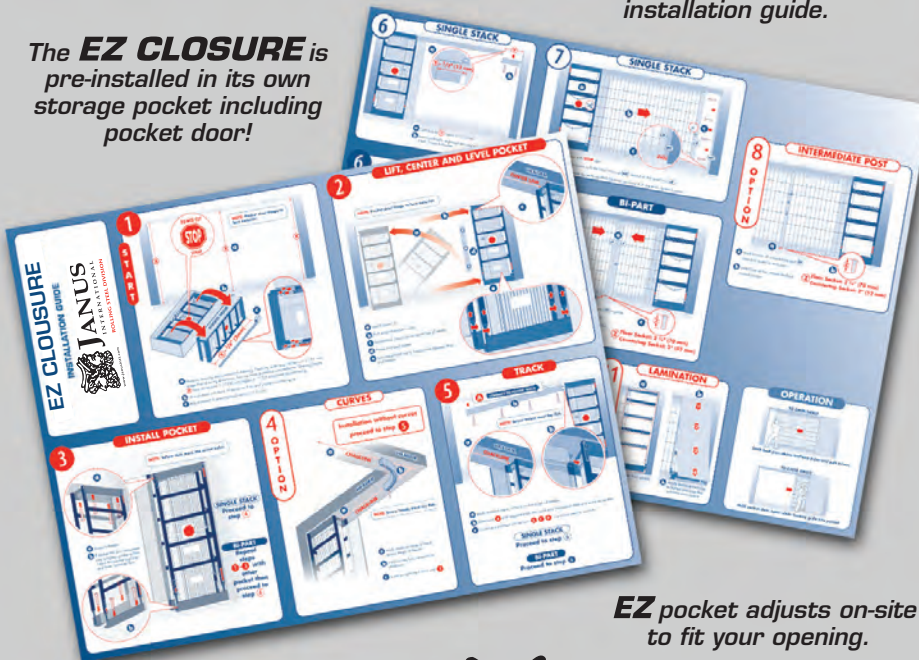
OPEN-AIR  
**EZ GILLE**



PERFORATED ALUMINUM  
**EZ VENT**

The **EZ CLOSURE** is labeled with instructions and comes with an **EZ** to follow installation guide.

The **EZ CLOSURE** is pre-installed in its own storage pocket including pocket door!



Installs within footprint of six inch stud wall - no additional pocket space required!

So simple to install, anyone can do it in an hour!

Two year Limited Warranty!

**EZ** pocket adjusts on-site to fit your opening.



**JANUS**

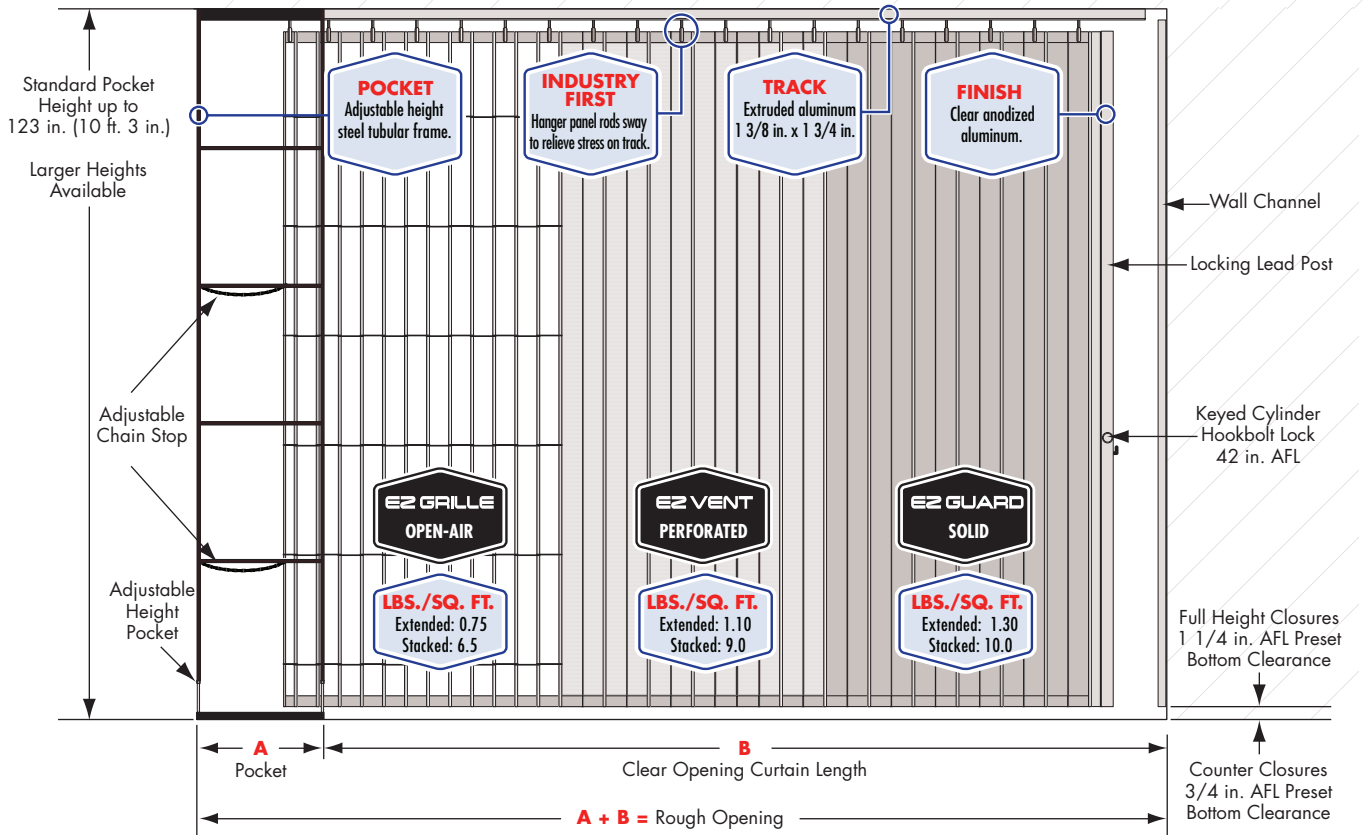
INTERNATIONAL

ROLLING STEEL DIVISION

www.janusintl.com

# EZ CLOSURE

## STANDARD FEATURES



## STANDARD STRAIGHT LAYOUT POCKET DIMENSIONS

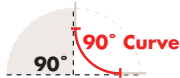
| Rough Opening Width |                              |
|---------------------|------------------------------|
| A                   | B                            |
| Pocket              | Clear Opening Curtain Length |
| 11 in.              | up to 60 in. (5 ft. 0 in.)   |
| 15 1/2 in.          | up to 102 in. (8 ft. 6 in.)  |
| 20 in.              | up to 120 in. (10 ft. 0 in.) |
| 25 in.              | up to 162 in. (13 ft. 6 in.) |
| 31 in.              | up to 222 in. (18 ft. 6 in.) |
| 36 in.              | up to 240 in. (20 ft. 6 in.) |
| 42 in.              | up to 294 in. (24 ft. 6 in.) |
| 48 in.              | up to 354 in. (29 ft. 6 in.) |

Consult factory for layouts with curves.  
Larger widths accommodated with custom pockets.

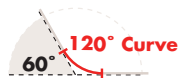
## OPTIONAL FEATURES

- Interior thumb turn in lieu of keyed cylinder. Protection panels required on EZ Grille.
- Top and bottom locking lead post.
- Bi-parting closure (dual pockets).
- Factory supplied laminate pocket covering.
- Standard curves and custom radius curves available.

14 in./10 in. Radius



10 in. Radius



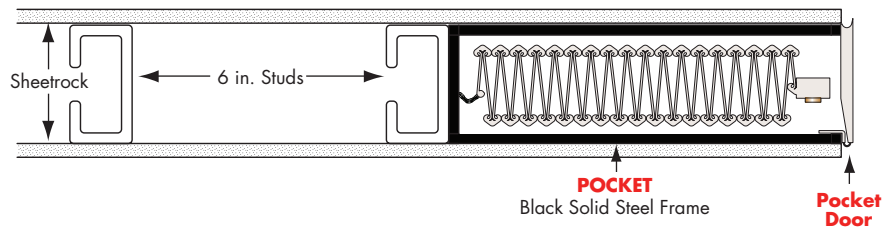
10 in. Radius



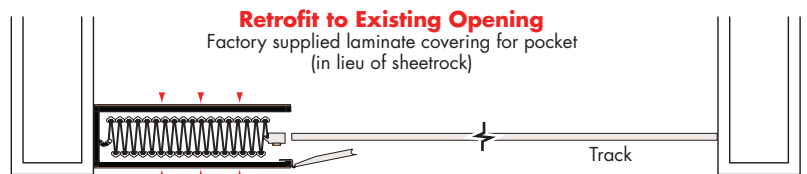
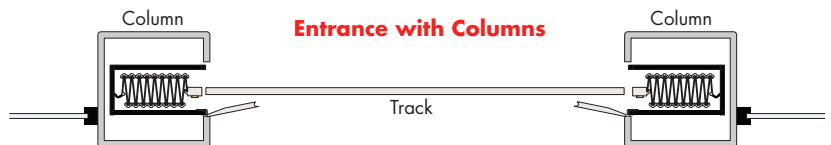
10 in. Radius



## POCKET DETAIL IN 6 INCH STUD WALL



## TYPICAL LAYOUTS



**JANUS**  
INTERNATIONAL

ROLLING STEEL DIVISION