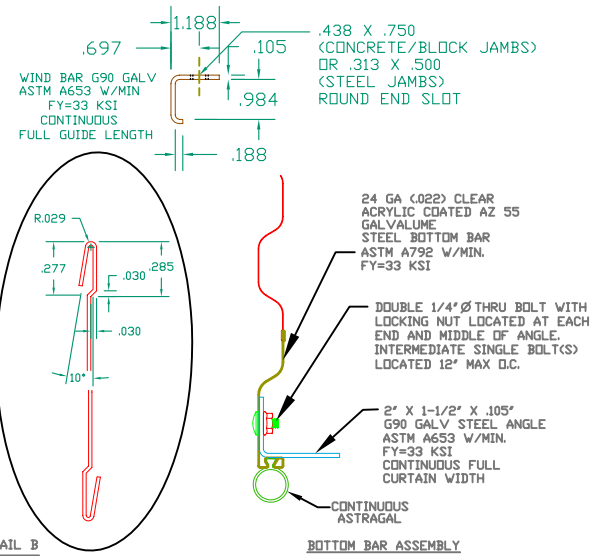
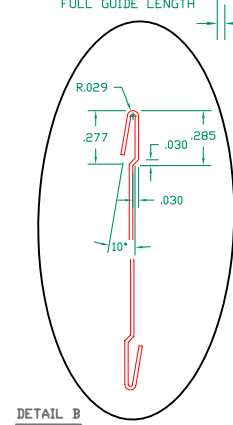
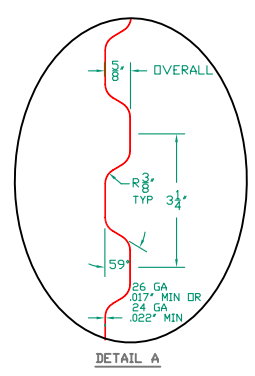
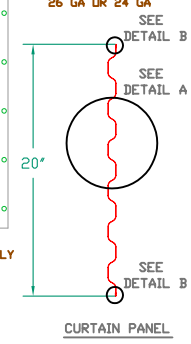
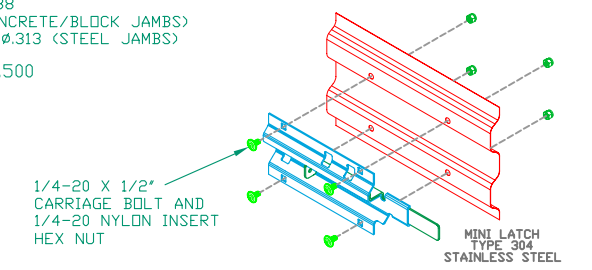
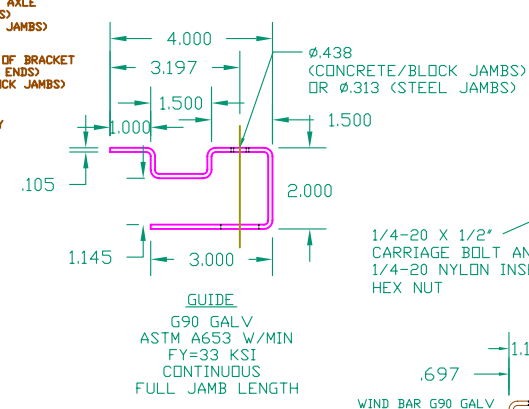
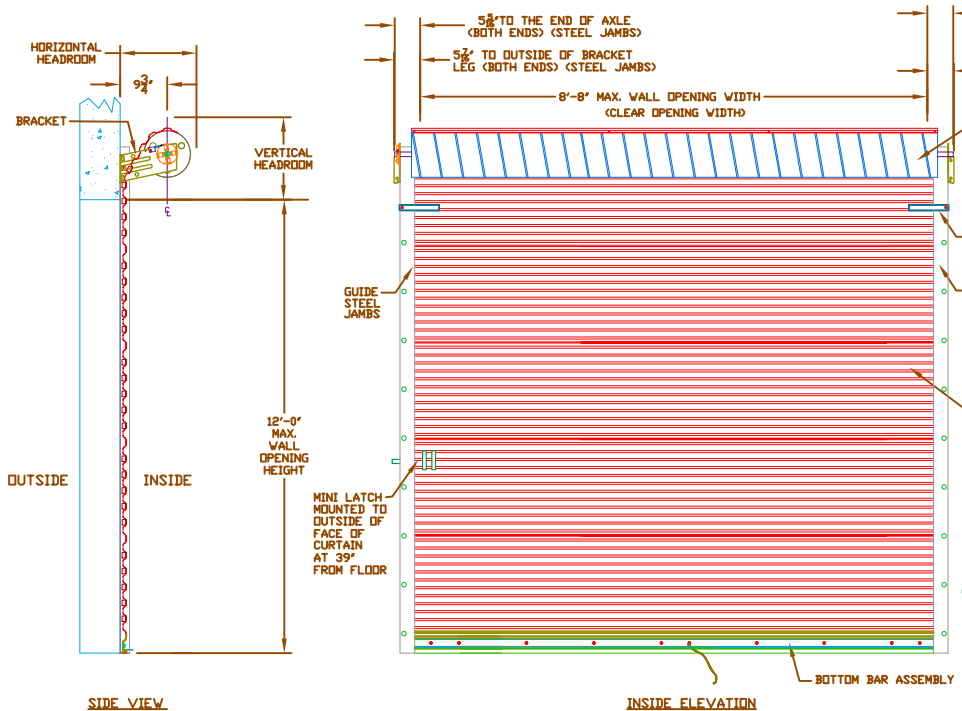


REVISIONS			
REV	DESCRIPTION	DATE	APPROVAL
1	DRAWING RELEASE	9-15-03	DM
A	GENERAL CHANGES	1-16-04	DM



HEADROOM REQUIRED

OPENING HEIGHT	VERTICAL HEADROOM	HORIZONTAL HEADROOM
THRU 7'-4"	15'-1/2"	17'-1/2"
OVER 7'-4" THRU 8'-8"	16'	18'
OVER 8'-8" THRU 10'-0"	17'	18'-1/4"

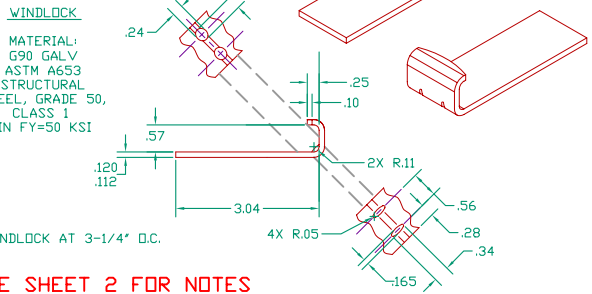
ASTM A653 GR 80 MIN FY=80 KSI. G90 GALVANIZED STEEL DR G60 GALVANIZED STEEL WITH PRE-PAINTED SILICONE POLYESTER PAINT ON BOTH SIDES OF CURTAIN.

CURTAIN PANELS LOCK SEALED TOGETHER. CURTAIN DETAIL

STRUCTURAL ENGINEER: JOSEPH H. DIXON, JR. P.E. FL #7768

UNLESS OTHERWISE SPECIFIED DIMENSIONS ARE IN INCHES AND TOLERANCES ARE:

DECIMAL	FRACTIONS	ANGLES	HOLE DIAMETERS
.XX ±.03	± 1/16	± 0° 30'	UNDER .251 +.004 -.003
.XXX ±.005			.251 to .500 +.006 -.003
			OVER .500 +.008 -.003



SEE SHEET 2 FOR NOTES

**JANUS INTERNATIONAL CORPORATION**  
 134 EAST LUKE ROAD TEMPLE, GA 30179-4435  
 770-562-2850/Fax 770-562-2264  
 © 2005 Janus International Corporation All Rights Reserved

**FLORIDA STATE MINI DOOR SERIES 850-S**  
 MAX. SIZE 8'-8" X 12'-0"

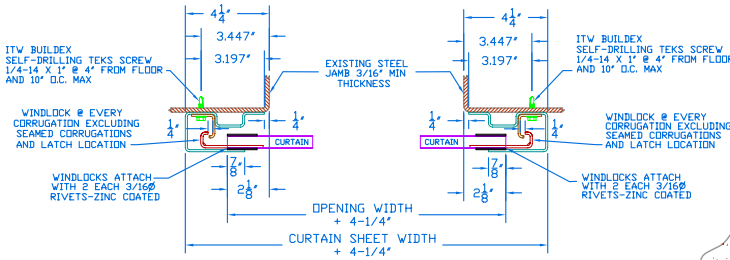
DRAWN: BECKY NELSON 7-25-03  
 CHECKED: DON MILLS 9-15-03  
 APPROVED: DON MILLS 9-15-03

SIZE: B DRAWING NUMBER: T1006-S REV: A  
 SCALE: NONE SHEET: 1 OF: 2

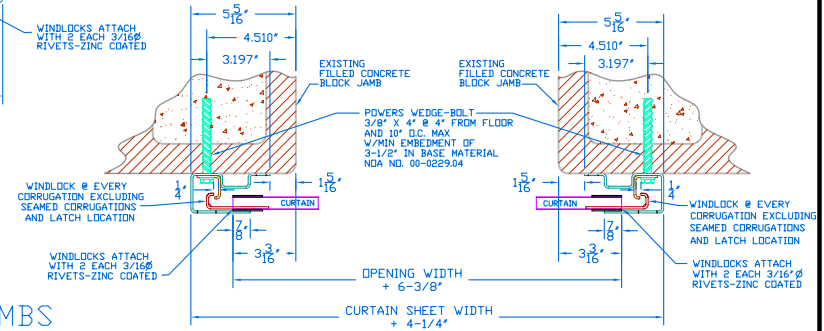
GENERAL NOTES

- THIS ROLL-UP DOOR SYSTEM HAS BEEN SUCCESSFULLY TESTED ACCORDING TO THE UNIFORM STATIC AIR PRESSURE TEST PER TAS 202-94, THE LARGE MISSILE IMPACT TEST PER TAS 201-94 AND THE CYCLIC WIND PRESSURE LOADING TEST PER TAS 203-94, IN AN INDEPENDENT TESTING LAB CONFORMING TO TAS 301-94. CURTAIN MATERIAL THICKNESS OF .017" (26 GA) AND .022" (24 GA) WERE BOTH QUALIFIED BY THE TEST PROCEDURE.
- THE DOOR IS DESIGNED TO COMPLY WITH THE REQUIREMENTS OF THE FLORIDA BUILDING CODE, 2004, INCLUDING THE APPLICABLE PROVISIONS FOR HIGH VELOCITY HURRICANE ZONES (HVHZ).
- DESIGN LOAD RATING = +46.0 PSF POSITIVE WIND LOAD  
-54.0 PSF NEGATIVE WIND LOAD
- WIND LOADS FOR BUILDING OPENINGS SHALL BE DETERMINED BY A PROFESSIONAL ENGINEER USING APPROPRIATE WIND SPEED AND DESIGN CRITERIA. THIS DOOR MAY BE USED WHERE ITS DESIGN LOAD MEETS OR EXCEEDS THE DESIGN LOAD REQUIRED FOR THE BUILDING OPENING.
- THE BUILDING ENGINEER SHALL VERIFY THE ADEQUACY OF THE BUILDING STRUCTURE TO WITHSTAND SUPERIMPOSED LOADS P<sub>xpf</sub>, P<sub>ypf</sub> + R<sub>ypf</sub>, P<sub>xnf</sub> and P<sub>ynf</sub> + R<sub>ynf</sub>
- ALL WELDING SHALL BE PERFORMED BY QUALIFIED WELDERS IN ACCORDANCE WITH THE LATEST EDITION OF AWS SPECIFICATIONS. ALL WELDING ELECTRODES SHALL CONFORM TO AWS A51, GRADE E-70.
- ALL BOLTS AND WASHERS SHALL BE GALVANIZED STEEL OR STAINLESS STEEL WITH A MINIMUM TENSILE STRENGTH OF 60 KSI.
- DOORS SHALL BE PROVIDED WITH A SINGLE CURTAIN MOUNTED SLIDE LOCK LATCH THAT ENGAGES THE DOOR GUIDE WHEN DOOR IS FULLY CLOSED.
- DOOR ASSEMBLY DESIGN BASED ON CERTIFIED TESTING LABORATORIES, INC. TEST REPORT NO. CTLA-1115W.
- ANCHOR NOTES:  
A. EMBEDMENT LENGTH DOES NOT INCLUDE STUCCO FINISH.  
B. FOR HOLLOW MASONRY BLOCK, FILL ALL CELLS AT ANCHOR LOCATIONS WITH MINIMUM 2000 PSI GROUT.  
C. CONCRETE JAMBS TO BE MINIMUM 2000 PSI.  
D. ANCHORS SHALL BE INSTALLED IN ACCORDANCE WITH MANUFACTURER'S SPECIFICATIONS.
- GUIDE TO JAMB ATTACHMENT FASTENERS BEGIN 4" FROM FLOOR AND END 3/8" BELOW TOP OF WALL OPENING.
- TEST DOOR WALL OPENING SIZE: 8'-8" X 8'-0".

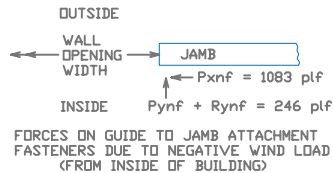
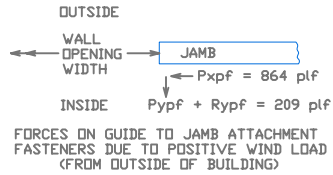
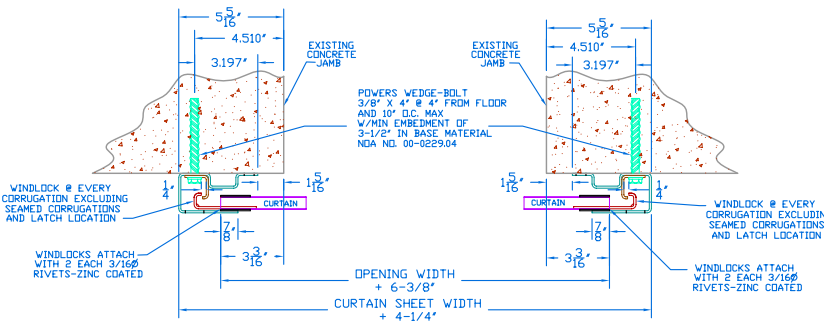
STEEL JAMBS



FILLED BLOCK JAMBS



CONCRETE JAMBS



STRUCTURAL ENGINEER: JOSEPH H. DIXON, JR. P.E. FL #7768

UNLESS OTHERWISE SPECIFIED DIMENSIONS ARE IN INCHES AND TOLERANCES ARE:

	DECIMAL	FRACTIONS	ANGLES	HOLE DIAMETERS	
.XX	±.03	± 1/16	± 0° 30'	UNDER .251	+ .004 - .003
.XXX	±.005			.251 to .500	+ .006 - .003
				OVER .500	+ .008 - .003

PART NUMBER		NA
MATERIAL		NA
APPLIED FINISH		NA
UNIT OF MEASURE		NA
APPROVALS	DATE	
DRAWN	DATE	
BECKY NELSON	7-25-03	
CHECKED	DATE	
DDN MILLS	9-15-03	
APPROVED	DATE	
DDN MILLS	9-15-03	

<b>JANUS INTERNATIONAL CORPORATION</b>			
134 EAST LUKE ROAD TEMPLE, GA 30179-4435			
770-562-2850/Fax 770-562-2264			
© 2005 Janus International Corporation All Rights Reserved			
FLORIDA STATE MINI DOOR SERIES 850-S			
MAX. SIZE 8'-8" X 12'-0"			
SIZE	DRAWING NUMBER	REVISION	
B	T1006-S	A	
SCALE	NONE	SHEET	2 OF 2