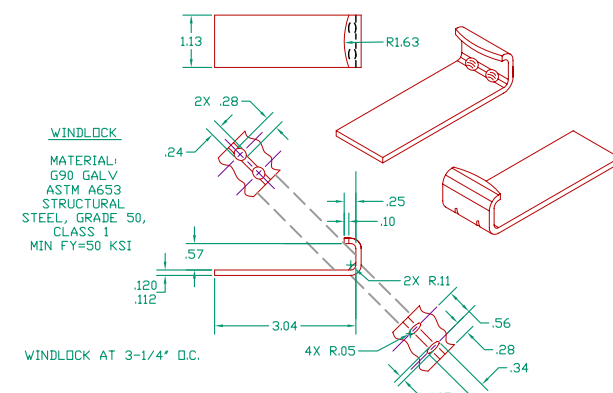
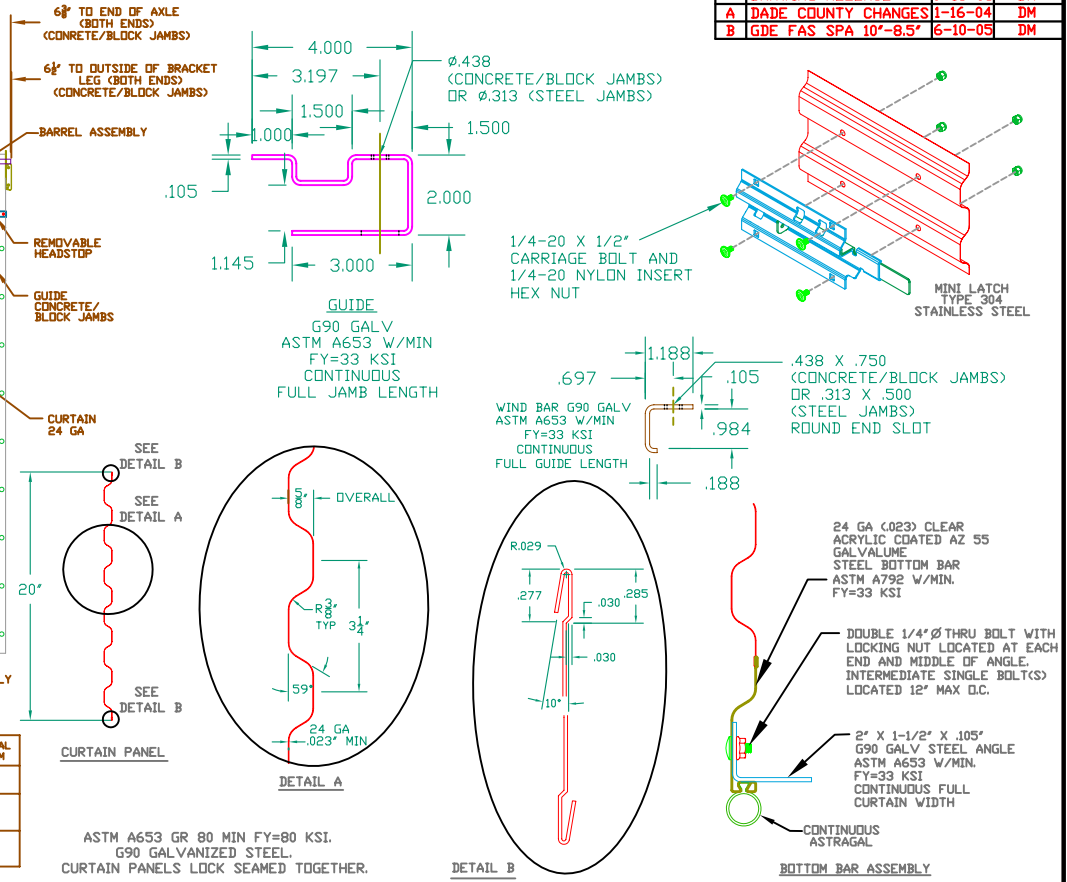
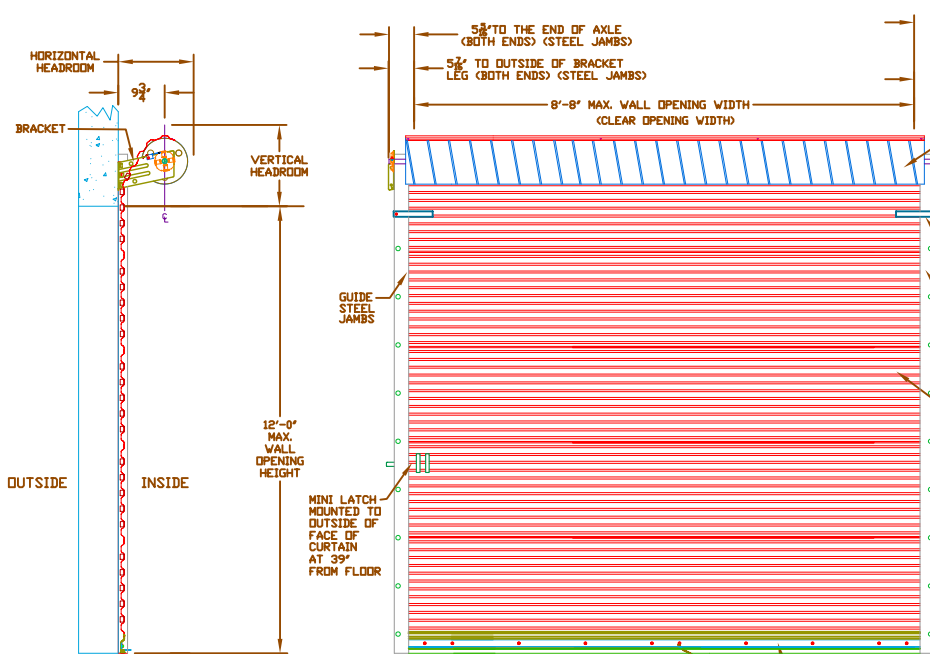


| REVISIONS | | | |
|-----------|----------------------|---------|----------|
| REV | DESCRIPTION | DATE | APPROVAL |
| — | DRAWING RELEASE | 9-15-03 | DM |
| A | DADE COUNTY CHANGES | 1-16-04 | DM |
| B | GDE FAS SPA 10'-8.5" | 6-10-05 | DM |



STRUCTURAL ENGINEER: JOSEPH H. DIXON, JR. P.E. FL #7768

UNLESS OTHERWISE SPECIFIED DIMENSIONS ARE IN INCHES AND TOLERANCES ARE:

| DECIMAL | FRACTIONS | ANGLES | HOLE DIAMETERS |
|------------|-----------|----------|-----------------------------|
| .XX ±.03 | ± 1/16 | ± 0° 30' | UNDER .251 +.004 -.003 |
| .XXX ±.005 | | | .251 to .500 +.006 -.003 |
| | | | OVER .500 +.008 -.003 |

| | |
|----------------------|---------|
| PART NUMBER: NA | |
| MATERIAL: NA | |
| APPLIED FINISH: NA | |
| UNIT OF MEASURE: NA | |
| APPROVALS | DATE |
| BR/AVN: BECKY NELSON | 7-25-03 |
| CHECKED: DDN MILLS | 9-15-03 |
| APPROVED: DDN MILLS | 9-15-03 |

JANUS INTERNATIONAL CORPORATION
134 EAST LUKE ROAD TEMPLE, GA 30179-4435
770-562-2850/Fax 770-562-2264
© 2005 Janus International Corporation All Rights Reserved

DADE COUNTY MINI DOOR SERIES 850
MAX. SIZE 8'-8" X 12'-0"

SIZE: **B** DRAWING NUMBER: **T1006** REV: **B**

SCALE: NONE SHEET: 1 OF 2

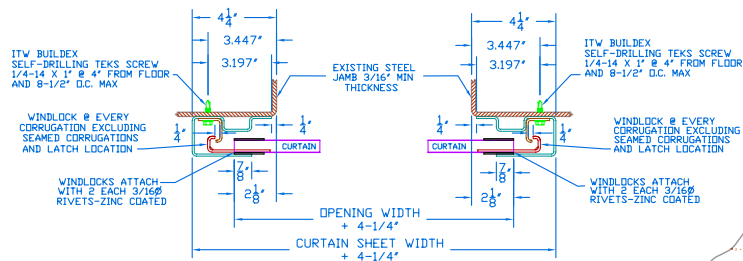
SEE SHEET 2 FOR NOTES

GENERAL NOTES

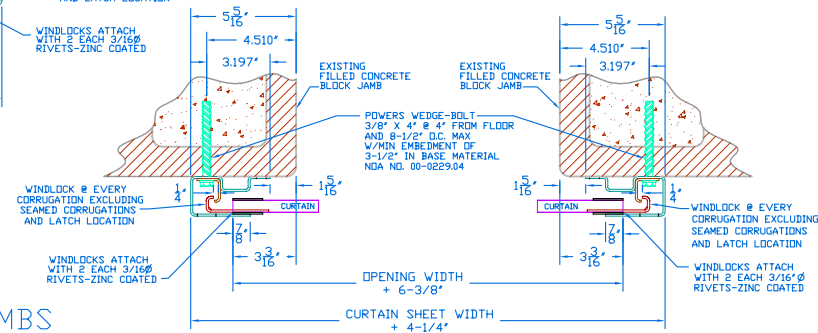
- THIS ROLL-UP DOOR SYSTEM HAS BEEN SUCCESSFULLY TESTED ACCORDING TO THE UNIFORM STATIC AIR PRESSURE TEST PER TAS 202-94, THE LARGE MISSILE IMPACT TEST PER TAS 201-94 AND THE CYCLIC WIND PRESSURE LOADING TEST PER TAS 203-94, IN AN INDEPENDENT TESTING LAB CONFORMING TO TAS 301-94.
- THE DOOR IS DESIGNED TO COMPLY WITH THE MIAMI-DADE COUNTY PRODUCT CONTROL DIVISION FOR THE HIGH VELOCITY HURRICANE ZONE (HVHZ) OF THE FLORIDA BUILDING CODE.
- DESIGN LOAD RATING = +46.0 PSF POSITIVE WIND LOAD
-54.0 PSF NEGATIVE WIND LOAD
- WIND LOADS FOR BUILDING OPENINGS SHALL BE DETERMINED BY A PROFESSIONAL ENGINEER USING APPROPRIATE WIND SPEED AND DESIGN CRITERIA. THIS DOOR MAY BE USED WHERE ITS DESIGN LOAD MEETS OR EXCEEDS THE DESIGN LOAD REQUIRED FOR THE BUILDING OPENING.
- THE BUILDING ENGINEER SHALL VERIFY THE ADEQUACY OF THE BUILDING STRUCTURE TO WITHSTAND SUPERIMPOSED LOADS P_{xpf}, P_{ypf} + R_{ypf}, P_{xnf} and P_{ynf} + R_{ynf}.
- EACH MIAMI-DADE COUNTY DOOR ASSEMBLY SHALL BE LABELED AS FOLLOWS:

JANUS INTERNATIONAL CORPORATION
TEMPLE, GA
MIAMI-DADE COUNTY PRODUCT CONTROL APPROVED
- ALL WELDING SHALL BE PERFORMED BY QUALIFIED WELDERS IN ACCORDANCE WITH THE LATEST EDITION OF AWS SPECIFICATIONS. ALL WELDING ELECTRODES SHALL CONFORM TO AWS A5.1, GRADE E-70.
- ALL BOLTS AND WASHERS SHALL BE GALVANIZED STEEL OR STAINLESS STEEL WITH A MINIMUM TENSILE STRENGTH OF 60 KSI.
- DOORS SHALL BE PROVIDED WITH A SINGLE CURTAIN MOUNTED SLIDE LATCH THAT ENGAGES THE DOOR GUIDE WHEN DOOR IS FULLY CLOSED.
- DOOR ASSEMBLY DESIGN BASED ON CERTIFIED TESTING LABORATORIES, INC., TEST REPORT NO. CTLA-1115W.
- ANCHOR NOTES:
A. EMBEDMENT LENGTH DOES NOT INCLUDE STUCCO FINISH.
B. FOR HOLLOW MASONRY BLOCK, FILL ALL CELLS AT ANCHOR LOCATIONS WITH MINIMUM 2000 PSI GROUT.
C. CONCRETE JAMBS TO BE MINIMUM 2000 PSI.
D. ANCHORS SHALL BE INSTALLED IN ACCORDANCE WITH MANUFACTURER'S SPECIFICATIONS.
- GUIDE TO JAMB ATTACHMENT FASTENERS BEGIN 4" FROM FLOOR AND END 3/8" BELOW TOP OF WALL OPENING.
- TEST DOOR WALL OPENING SIZE: 8'-8" X 8'-0".

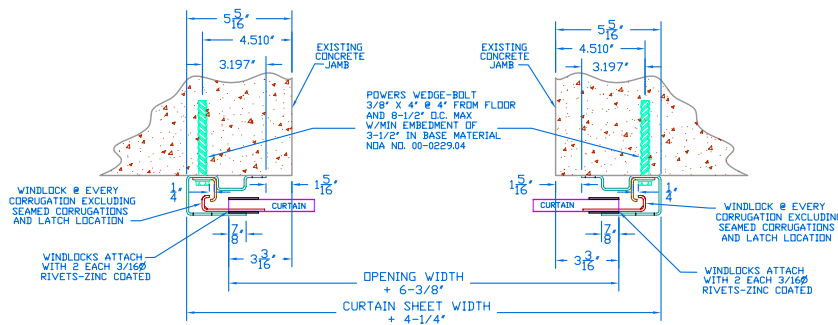
STEEL JAMBS



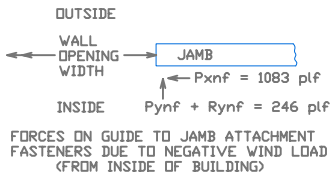
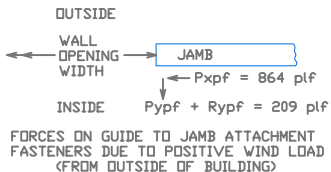
FILLED BLOCK JAMBS



CONCRETE JAMBS



| REVISIONS | | | |
|-----------|----------------------|---------|----------|
| REV | DESCRIPTION | DATE | APPROVAL |
| — | DRAWING RELEASE | 9-15-03 | DM |
| A | DADE COUNTY CHANGES | 1-16-04 | DM |
| B | GDE FAS SPA 10'-8.5" | 6-10-05 | DM |



STRUCTURAL ENGINEER: JOSEPH H. DIXON, JR. P.E. FL #7768

UNLESS OTHERWISE SPECIFIED DIMENSIONS ARE IN INCHES AND TOLERANCES ARE:

| DECIMAL | FRACTIONS | ANGLES | HOLE DIAMETERS |
|------------|-----------|----------|-----------------------------|
| .XX ±.03 | ± 1/16 | ± 0° 30' | UNDER .251 +.004 -.003 |
| .XXX ±.005 | | | .251 to .500 +.006 -.003 |
| | | | OVER .500 +.008 -.003 |

| | | |
|-----------------|--------------|---------|
| PART NUMBER | | NA |
| MATERIAL | | NA |
| APPLIED FINISH | | NA |
| UNIT OF MEASURE | | NA |
| APPROVALS | DATE | |
| DRAWN | BECKY NELSON | 7-25-03 |
| CHECKED | DN MILLS | 9-15-03 |
| APPROVED | DN MILLS | 9-15-03 |

JANUS INTERNATIONAL CORPORATION
 134 EAST LUKE ROAD TEMPLE, GA 30179-4435
 770-562-2850/Fax 770-562-2264
 © 2005 Janus International Corporation All Rights Reserved

DADE COUNTY MINI DOOR SERIES 850
 MAX. SIZE 8'-8" X 12'-0"

| | | | | | |
|-------|------|----------------|-------|-----|---|
| SIZE | B | DRAWING NUMBER | T1006 | REV | B |
| SCALE | NONE | SHEET | 2 | OF | 2 |