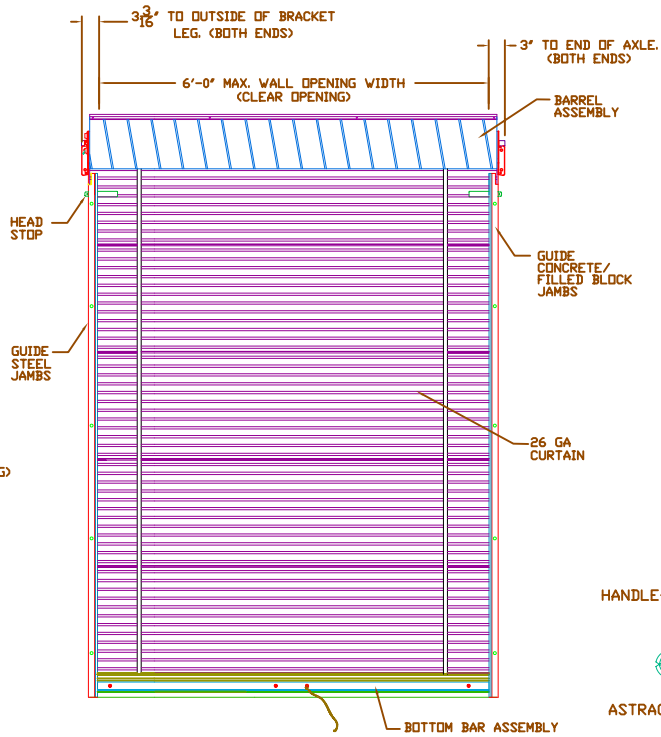
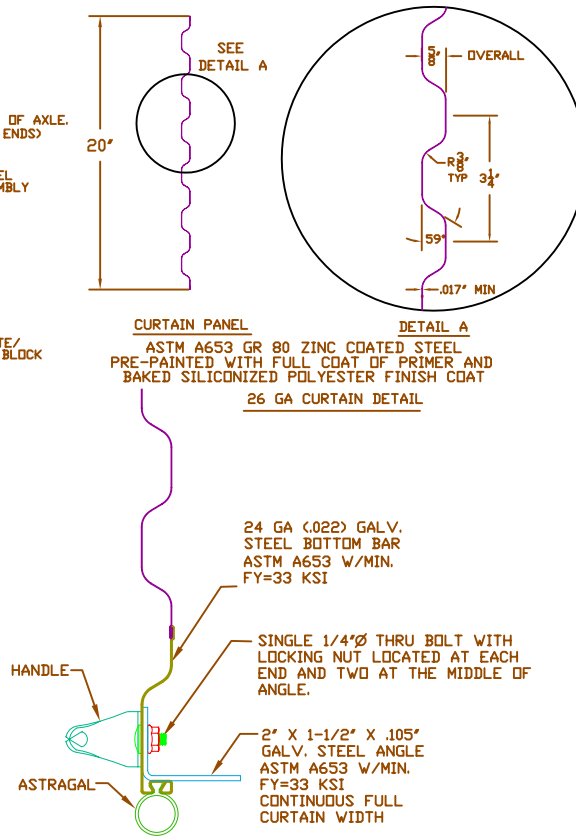


SIDE VIEW

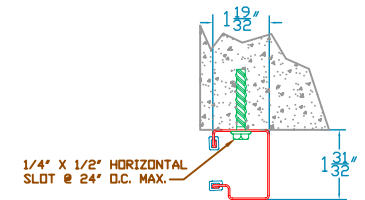


INSIDE ELEVATION

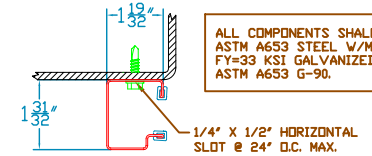


BOTTOM BAR ASSEMBLY

REVISIONS			
REV	DESCRIPTION	DATE	APPROVAL
—	DRAWING RELEASE	11-14-02	DM
A	NOTE REVISIONS	4-16-04	DM



CONCRETE/FILLED BLOCK JAMBS USING 1/4" X 1-3/4" POWERS WEDGE-BOLT



STEEL JAMBS USING 1/4-14 X 1" TEKS
18 GA (.046) GUIDE MOUNTING DETAIL

ALL COMPONENTS SHALL BE ASTM A653 STEEL W/MIN FY=33 KSI GALVANIZED PER ASTM A653 G-90.

HEADROOM REQUIRED

OPENING HEIGHT	VERTICAL HEADROOM	HORIZONTAL HEADROOM
THRU 7'-4"	15-1/2"	17-1/2"
OVER 7'-4" THRU 8'-8"	16"	18"
OVER 8'-8" THRU 10'-0"	17"	18-1/4"

SEE SHEET 2 FOR NOTES

THESE CONFIDENTIAL DOCUMENTS SUBMITTED BY JANUS CONTAIN INFORMATION OF A PROPRIETARY NATURE AND MAY NOT BE REPRODUCED OR USED TO MANUFACTURE ANYTHING IN PART OR IN WHOLE FOR ANY PURPOSE OTHER THAN THAT WHICH IS NECESSARY FOR PREPARATION OF BIDS OF ENGINEERING WITHOUT THE EXPRESS PERMISSION OF JANUS WHICH MAY RECALL DOCUMENTS AT ANY TIME.

UNLESS OTHERWISE SPECIFIED DIMENSIONS ARE IN INCHES AND TOLERANCES ARE:

DECIMAL	FRACTIONS	ANGLES	HOLE DIAMETERS
.XX ±.03	± 1/16	± 0° 30'	UNDER .251 +.004 -.003
.XXX ±.005			.251 to .500 +.006 -.003
			OVER .500 +.008 -.003

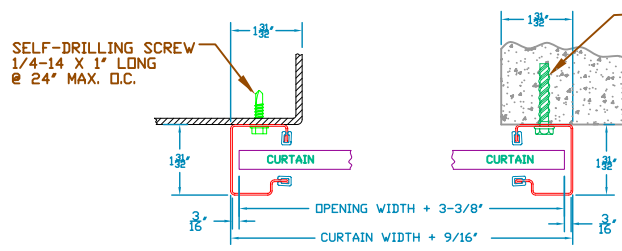
PART NUMBER:	
MATERIAL:	
APPLIED FINISH:	
UNIT OF MEASURE:	
APPROVALS	DATE
DRAWN: BECKY NELSON	11-14-02
CHECKED: DON MILLS	11-14-02
APPROVED: DON MILLS	11-14-02

JANUS INTERNATIONAL CORPORATION
 134 EAST LUKE ROAD TEMPLE, GA 30179-4435
 770-562-2850/Fax 770-562-2264
 © 2005 Janus International Corporation All Rights Reserved

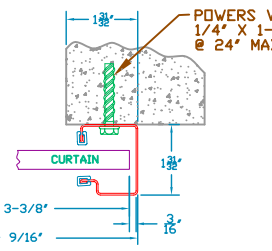
CERTIFIED WIND LOAD RATED
26 GA SERIES 750 DOOR ASSEMBLY
MAX. SIZE 6'-0" X 12'-0"

SIZE: B	DRAWING NUMBER: T1001	REV: A
SCALE: NONE	SHEET: 1 OF 2	

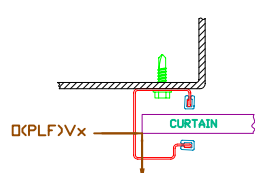
REVISIONS			
REV	DESCRIPTION	DATE	APPROVAL
A	DRAWING RELEASE	11-14-02	DM
A	NOTE REVISIONS	4-16-04	DM



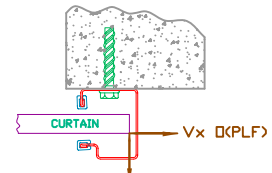
STEEL JAMBS
LH GUIDE MOUNT SHOWN



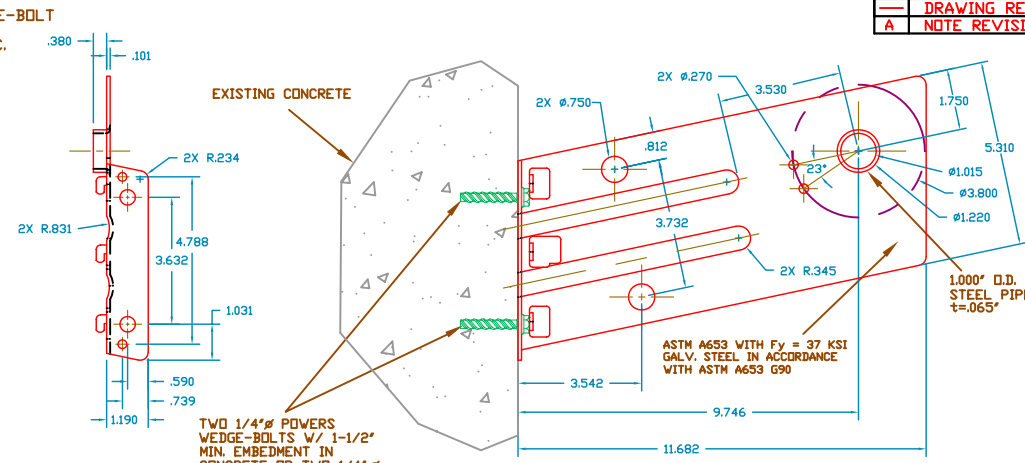
CONCRETE/FILLED BLOCK JAMBS
RH GUIDE MOUNT SHOWN



STEEL JAMBS
LH GUIDE MOUNT SHOWN



CONCRETE/FILLED BLOCK JAMBS
RH GUIDE MOUNT SHOWN



DOOR MOUNTING BRACKET DETAIL

Comparative forces by calculation to determine maximum design pressure based on maximum moment and shear developed by test, 6' x 8' door

	Design Windload		Positive Wind Design		Negative Wind Design	
	Pos psf	Neg psf	Moment In-lb/ft	Shear lb/ft	Moment In-lb/ft	Shear lb/ft
Test Door 6' x 8'	19.9	24.4				
Calibration calculations for test door			1089.6	601	1336.0	73.7
Max Door Size (Width x Height)						
3'-4" x 12"	35.6	43.7	608.7	601	746.3	73.7
3'-6" x 12"	33.9	41.6	638.7	601	783.2	73.7
3'-8" x 12"	32.4	39.8	668.8	601	820.0	73.7
4'-0" x 12"	29.7	36.5	728.9	601	893.7	73.7
5'-0" x 12"	23.8	29.2	909.2	601	114.8	73.7
5'-6" x 12"	21.7	26.6	999.4	601	1225.4	73.7
6'-0" x 12"	19.9	24.4	1089.6	601	1336.0	73.7

Design wind forces are calculated to produce moment and shear equal to or less than those developed in the test door. This indicates that the curtain, guides, and jamb anchorages will all be stressed to approximately the same or less than those in the test door, provided that the door is constructed the same for all opening widths.

GENERAL NOTES

- THIS ROLL-UP DOOR SYSTEM IS DESIGNED IN ACCORDANCE WITH THE STANDARD BUILDING CODE 1999 EDITION, ASCE 7-98, FLORIDA BUILDING CODE 2004 AND INTERNATIONAL BUILDING CODE 2000.
- THIS ROLL-UP DOOR HAS BEEN TESTED IN ACCORDANCE WITH ASTM E-330 TO SAFELY RESIST A POSITIVE OR NEGATIVE WIND LOAD AS NOTED BELOW. A TEST LOAD OF 1.5 X DESIGN LOAD HAS BEEN USED.

DESIGN LOAD = +19.9 PSF
-24.4
- WIND LOADS FOR BUILDING OPENINGS SHALL BE DETERMINED BY A PROFESSIONAL ENGINEER USING APPROPRIATE WIND SPEED AND DESIGN CRITERIA. THIS DOOR MAY BE USED WHERE THE DESIGN LOAD MEETS OR EXCEEDS THE DESIGN LOAD FOR THE BUILDING OPENING.
- SUPERIMPOSED LOADS ON THE JAMBS FROM THIS DOOR ARE DESIGNED AS Vx AND Vy HEREIN. CONTRACTORS SHALL HAVE BUILDING ENGINEER VERIFY ADEQUACY OF BUILDING STRUCTURE TO RESIST SUPERIMPOSED LOADS Vx, Vy AND BRACKET LOADS SHOWN.
- ALL WELDING SHALL BE PERFORMED BY QUALIFIED WELDERS IN ACCORDANCE WITH A.W.S. SPECIFICATIONS, LATEST EDITION. ALL WELDING ELECTRODES SHALL CONFORM TO A.W.S. A51 GRADE E-70.
- DOORS SHALL BE PROVIDED WITH LOCK MECHANISMS AT THE OPTION OF THE OWNER.
- ALL BOLTS AND WASHERS SHALL BE GALVANIZED OR STAINLESS STEEL WITH A MINIMUM TENSILE STRENGTH OF 60 KSI.
- DESIGN BASED ON CERTIFIED TESTING LABORATORIES, INC., TEST REPORT NO. CTLA-983W-1

SUPERIMPOSED LOAD DIAGRAM

- ANCHOR NOTES:
A. EMBEDMENT LENGTH DOES NOT INCLUDE STUCCO FINISH.
B. FOR HOLLOW MASONRY, FILL ALL CELLS @ ANCHOR WITH 2500 PSI GROUT.
C. ANCHORS SHALL BE INSTALLED IN ACCORDANCE WITH MANUFACTURER'S SPECIFICATIONS.
- DOOR OPERATION TYPE TO BE PUSH-UP.
- GUIDE TO JAMB ATTACHMENT FASTENERS BEGIN 4" FROM FLOOR AND END 3-1/2" BELOW TOP OF WALL OPENING.
- TEST DOOR WALL OPENING SIZE: 6'-0" x 8'-0".

THESE CONFIDENTIAL DOCUMENTS SUBMITTED BY JANUS CONTAIN INFORMATION OF A PROPRIETARY NATURE AND MAY NOT BE REPRODUCED OR USED TO MANUFACTURE ANYTHING IN PART OR IN WHOLE FOR ANY PURPOSE OTHER THAN THAT WHICH IS NECESSARY FOR PREPARATION OF BIDS OF ENGINEERING WITHOUT THE EXPRESS PERMISSION OF JANUS WHICH MAY RECALL DOCUMENTS AT ANY TIME.

UNLESS OTHERWISE SPECIFIED DIMENSIONS ARE IN INCHES AND TOLERANCES ARE:

DECIMAL	FRACTIONS	ANGLES	HOLE DIAMETERS
.XX ±.03	± 1/16	± 0° 30'	UNDER .251 +.004 -.003
.XXX ±.005			.251 to .500 +.006 -.003
			OVER .500 +.008 -.003

PART NUMBER:

MATERIAL:

APPLIED FINISH:

UNIT OF MEASURE:

APPROVALS DATE:

DRAWN: BECKY NELSON 11-14-02

CHECKED: DON MILLS 11-14-02

APPROVED: DON MILLS 11-14-02

JANUS INTERNATIONAL CORPORATION
134 EAST LUKE ROAD TEMPLE, GA 30179-4435
770-562-2850/Fax 770-562-2264
© 2005 Janus International Corporation All Rights Reserved

CERTIFIED WIND LOAD RATED
26 GA SERIES 750 DOOR ASSEMBLY
MAX. SIZE 6'-0" X 12'-0"

SIZE: B DRAWING NUMBER: T1001 REV: —

SCALE: NONE SHEET: 2 OF: 2