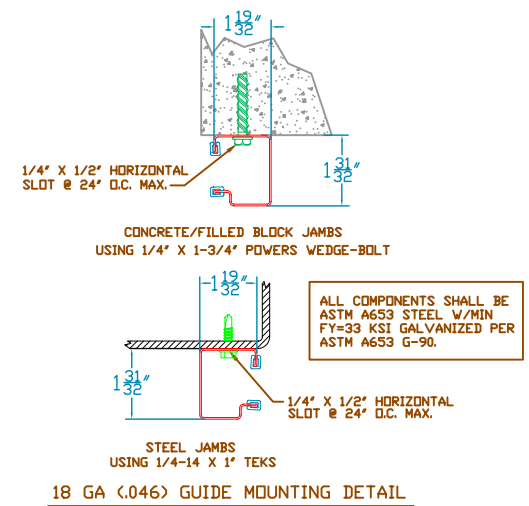


REVISIONS			
REV	DESCRIPTION	DATE	APPROVAL
—	DRAWING RELEASE	11-14-02	DM
A	NOTE REVISIONS	4-16-04	DM



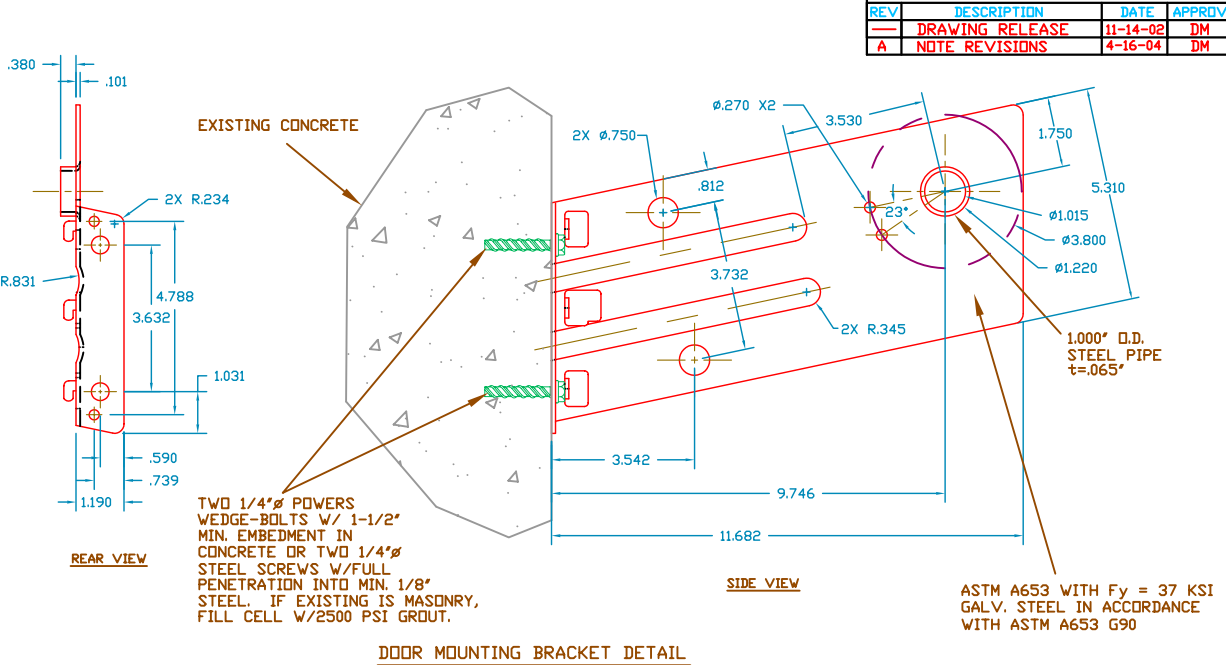
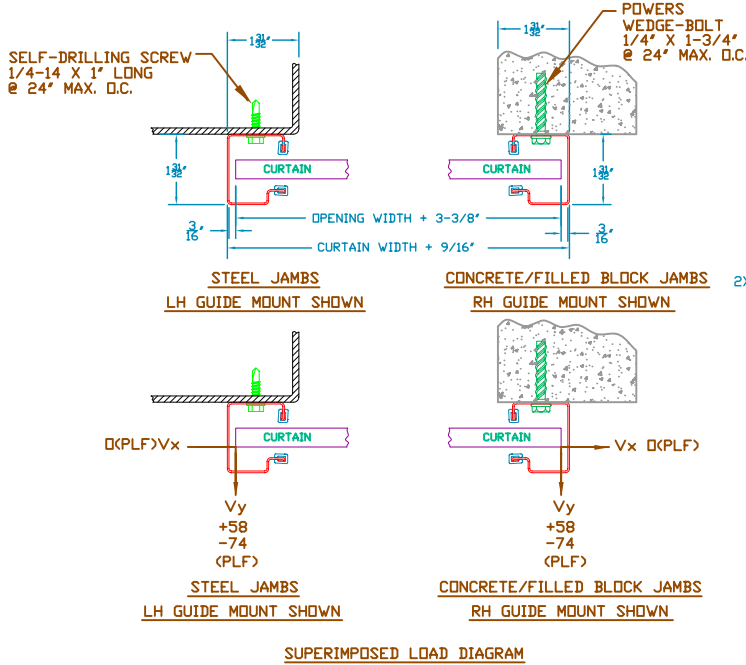
HEADROOM REQUIRED

OPENING HEIGHT	VERTICAL HEADROOM	HORIZONTAL HEADROOM
THRU 7'-4"	15-1/2"	17-1/2"
OVER 7'-4" THRU 8'-8"	16"	18"
OVER 8'-8" THRU 10'-0"	17"	18-1/4"

SEE SHEET 2 FOR NOTES

THESE CONFIDENTIAL DOCUMENTS SUBMITTED BY JANUS CONTAIN INFORMATION OF A PROPRIETARY NATURE AND MAY NOT BE REPRODUCED OR USED TO MANUFACTURE ANYTHING IN PART OR IN WHOLE FOR ANY PURPOSE OTHER THAN THAT WHICH IS NECESSARY FOR PREPARATION OF BIDS OF ENGINEERING WITHOUT THE EXPRESS PERMISSION OF JANUS WHICH MAY RECALL DOCUMENTS AT ANY TIME.		PART NUMBER: MATERIAL: APPLIED FINISH: UNIT OF MEASURE:		JANUS INTERNATIONAL CORPORATION 134 EAST LUKE ROAD TEMPLE, GA 30179-4435 770-562-2850/Fax 770-562-2264 © 2005 Janus International Corporation All Rights Reserved																																								
UNLESS OTHERWISE SPECIFIED DIMENSIONS ARE IN INCHES AND TOLERANCES ARE:		APPROVALS		CERTIFIED WIND LOAD RATED 26 GA SERIES 750 DOOR ASSEMBLY MAX. SIZE 3'-0" X 12'-0"																																								
<table border="1"> <thead> <tr> <th>DECIMAL</th> <th>FRACTIONS</th> <th>ANGLES</th> <th>HOLE DIAMETERS</th> </tr> </thead> <tbody> <tr> <td>.XX ±.03</td> <td>± 1/16</td> <td>± 0° 30'</td> <td>UNDER .251 +.004 -.003</td> </tr> <tr> <td>.XXX ±.005</td> <td></td> <td></td> <td>.251 to .500 +.006 -.003</td> </tr> <tr> <td></td> <td></td> <td></td> <td>OVER .500 +.008 -.003</td> </tr> </tbody> </table>	DECIMAL	FRACTIONS	ANGLES	HOLE DIAMETERS	.XX ±.03	± 1/16	± 0° 30'	UNDER .251 +.004 -.003	.XXX ±.005			.251 to .500 +.006 -.003				OVER .500 +.008 -.003	<table border="1"> <thead> <tr> <th>DATE</th> <th>APPROVALS</th> </tr> </thead> <tbody> <tr> <td>11-14-02</td> <td>BECKY NELSON</td> </tr> <tr> <td>11-14-02</td> <td>DON MILLS</td> </tr> <tr> <td>11-14-02</td> <td>DON MILLS</td> </tr> </tbody> </table>	DATE	APPROVALS	11-14-02	BECKY NELSON	11-14-02	DON MILLS	11-14-02	DON MILLS	<table border="1"> <thead> <tr> <th>DATE</th> <th>APPROVALS</th> </tr> </thead> <tbody> <tr> <td>11-14-02</td> <td>DON MILLS</td> </tr> </tbody> </table>	DATE	APPROVALS	11-14-02	DON MILLS	<table border="1"> <thead> <tr> <th>SIZE</th> <th>DRAWING NUMBER</th> <th>REV</th> </tr> </thead> <tbody> <tr> <td>B</td> <td>T1000</td> <td>A</td> </tr> </tbody> </table>	SIZE	DRAWING NUMBER	REV	B	T1000	A	<table border="1"> <thead> <tr> <th>SCALE</th> <th>SHEET</th> <th>OF</th> </tr> </thead> <tbody> <tr> <td>NONE</td> <td>1</td> <td>2</td> </tr> </tbody> </table>	SCALE	SHEET	OF	NONE	1	2
DECIMAL	FRACTIONS	ANGLES	HOLE DIAMETERS																																									
.XX ±.03	± 1/16	± 0° 30'	UNDER .251 +.004 -.003																																									
.XXX ±.005			.251 to .500 +.006 -.003																																									
			OVER .500 +.008 -.003																																									
DATE	APPROVALS																																											
11-14-02	BECKY NELSON																																											
11-14-02	DON MILLS																																											
11-14-02	DON MILLS																																											
DATE	APPROVALS																																											
11-14-02	DON MILLS																																											
SIZE	DRAWING NUMBER	REV																																										
B	T1000	A																																										
SCALE	SHEET	OF																																										
NONE	1	2																																										

REVISIONS			
REV	DESCRIPTION	DATE	APPROVAL
-	DRAWING RELEASE	11-14-02	DM
A	NOTE REVISIONS	4-16-04	DM



GENERAL NOTES

- THIS ROLL-UP DOOR SYSTEM IS DESIGNED IN ACCORDANCE WITH THE STANDARD BUILDING CODE 1999 EDITION, ASCE 7-98, FLORIDA BUILDING CODE 2004 AND INTERNATIONAL BUILDING CODE 2000.
- THIS ROLL-UP DOOR HAS BEEN TESTED IN ACCORDANCE WITH ASTM E-330 TO SAFELY RESIST A POSITIVE OR NEGATIVE WIND LOAD AS NOTED BELOW. A TEST LOAD OF 1.5 X DESIGN LOAD HAS BEEN USED.

DESIGN LOAD = $\frac{+35}{-45}$ PSF
- WIND LOADS FOR BUILDING OPENINGS SHALL BE DETERMINED BY A PROFESSIONAL ENGINEER USING APPROPRIATE WIND SPEED AND DESIGN CRITERIA. THIS DOOR MAY BE USED WHERE THE DESIGN LOAD MEETS OR EXCEEDS THE DESIGN LOAD FOR THE BUILDING OPENING.
- SUPERIMPOSED LOADS ON THE JAMBS FROM THIS DOOR ARE DESIGNED AS Vx AND Vy HEREIN. CONTRACTORS SHALL HAVE BUILDING ENGINEER VERIFY ADEQUACY OF BUILDING STRUCTURE TO RESIST SUPERIMPOSED LOADS Vx, Vy AND BRACKET LOADS SHOWN.
- ALL WELDING SHALL BE PERFORMED BY QUALIFIED WELDERS IN ACCORDANCE WITH A.W.S. SPECIFICATIONS, LATEST EDITION. ALL WELDING ELECTRODES SHALL CONFORM TO A.W.S. A5.1 GRADE E-70.
- DOORS SHALL BE PROVIDED WITH LOCK MECHANISMS AT THE OPTION OF THE OWNER.
- ALL BOLTS AND WASHERS SHALL BE GALVANIZED OR STAINLESS STEEL WITH A MINIMUM TENSILE STRENGTH OF 60 KSI.

- DESIGN BASED ON CERTIFIED TESTING LABORATORIES, INC., TEST REPORT NO. CTLA-983W
- ANCHOR NOTES:
A. EMBEDMENT LENGTH DOES NOT INCLUDE STUCCO FINISH.
B. FOR HOLLOW MASONRY, FILL ALL CELLS @ ANCHOR WITH 2500 PSI GROUT.
C. ANCHORS SHALL BE INSTALLED IN ACCORDANCE WITH MANUFACTURER'S SPECIFICATIONS.
- DOOR OPERATION TYPE TO BE PUSH-UP.

- GUIDE TO JAMB ATTACHMENT FASTENERS BEGIN 4" FROM FLOOR AND END 3-1/2" BELOW TOP OF WALL OPENING.
- TEST DOOR WALL OPENING SIZE: 3'-0" X 8'-0".

THESE CONFIDENTIAL DOCUMENTS SUBMITTED BY JANUS CONTAIN INFORMATION OF A PROPRIETARY NATURE AND MAY NOT BE REPRODUCED OR USED TO MANUFACTURE ANYTHING IN PART OR IN WHOLE FOR ANY PURPOSE OTHER THAN THAT WHICH IS NECESSARY FOR PREPARATION OF BIDS OF ENGINEERING WITHOUT THE EXPRESS PERMISSION OF JANUS WHICH MAY RECALL DOCUMENTS AT ANY TIME.

UNLESS OTHERWISE SPECIFIED DIMENSIONS ARE IN INCHES AND TOLERANCES ARE:

DECIMAL	FRACTIONS	ANGLES	HOLE DIAMETERS
.XX ±.03	± 1/16	± 0° 30'	UNDER .251 +.004 -.003
.XXX ±.005			.251 to .500 +.006 -.003
			OVER .500 +.008 -.003

PART NUMBER:	
MATERIAL:	
APPLIED FINISH:	
UNIT OF MEASURE:	
APPROVALS	DATE
DRAWN: BECKY NELSON	11-14-02
CHECKED: DON MILLS	11-14-02
APPROVED: DON MILLS	11-14-02

JANUS INTERNATIONAL CORPORATION
134 EAST LUKE ROAD TEMPLE, GA 30179-4435
770-562-2850/Fax 770-562-2264
© 2005 Janus International Corporation All Rights Reserved

CERTIFIED WIND LOAD RATED
26 GA SERIES 750 DOOR ASSEMBLY
MAX. SIZE 3'-0" X 12'-0"

SIZE: B	DRAWING NUMBER: T1000	REV: A
SCALE: NONE	SHEET: 2	OF: 2