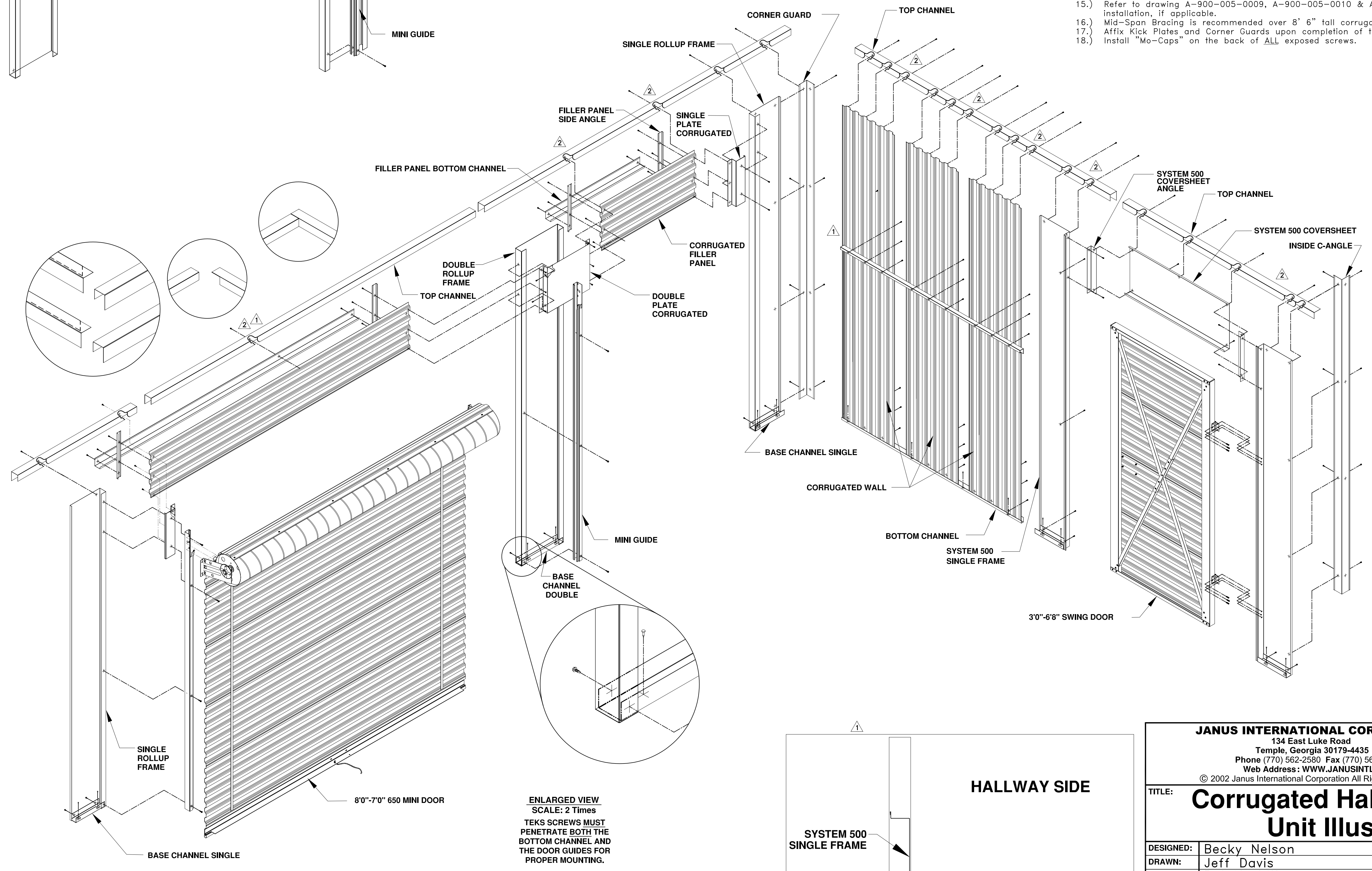


INSTALLATION NOTES:

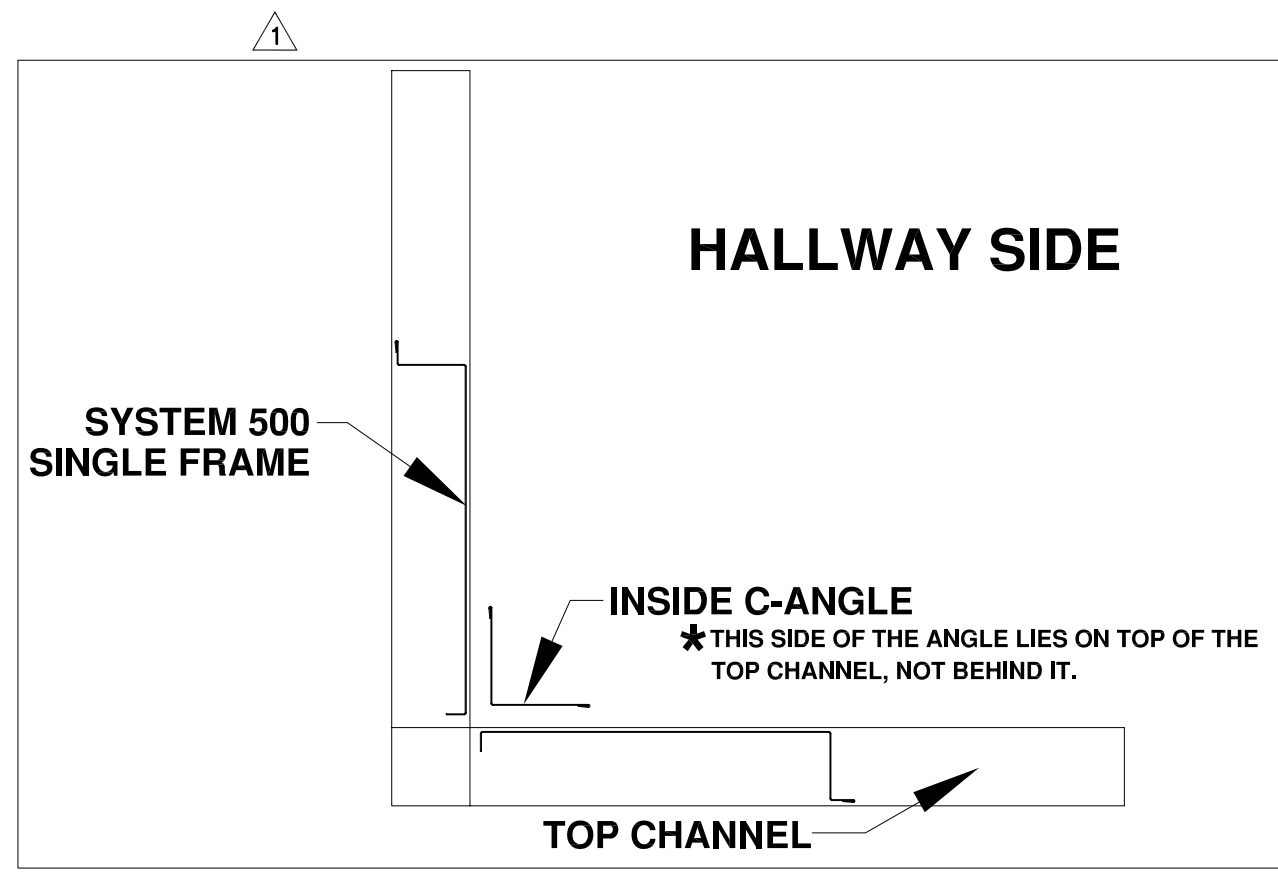
- 1.) These door and hallway system instructions are intended for a professional installer such as a steel erector or door installer. Individuals without sufficient knowledge of the doors, hallways or steel components can pose a threat for potential injury or harm. Failure to follow instructions can result in personal injury and/or material damages. Please review ALL drawings and instructions prior to installation and layout.
- 2.) Upon receiving material, check quantities and items against the packing list to confirm all materials were received. Arrange material in locations near their final position, out of the way of other trades. Stage in a dry area to minimize material movement and potential damage.
- 3.) Reference site drawing to review layout and unit mix before commencing installation. Note that the finished hallway dimension will be 4-1/2" less than the rough hallway width due to the 2-1/4" bottom floor channel secured on each side of the hallway.
- 4.) Using a chalk line, mark the dimensions for the hallway 2-1/4" from a steel structure starting point. Affix the hallway bottom channel between the steel structure and the edge of the chalk line.
- 5.) Anchor with supplied shot & pin every 24" on center. Continue in the same manner with the unit partition Bottom Channel measuring the units dimension from the back of channel (already anchored to the front of the channel being laid out. As plans indicate, affix the roll up frame Base Channels accordingly with 2 shot and pin fasteners per base channel.
- 6.) Attach starter angle to floor bottom channel. Temporarily brace with 2"x2" angle, to reinforce and minimize flexibility. Make sure the starter angle is plumb for easy top channel installation. A starter angle is required between each individual unit.
- 7.) Attach flush or corrugated Back Plate to Rollup Frame with (4) #8 Tek screws—2 per side. Height of the plate is determined by the height of the hallway system and door size. The top edge of the Back Plate should also be flush with the top edge of the Rollup Frame. Install the Rollup Frames relative to door opening size. Stand up the Rollup Frame with the Back Plate and fasten the assembly to the rollup frame base channel. Insure that the frame is plumb for easy Top

Revisions			
Rev.	Description	Date	APRVD.
0	Released for distribution.	7/16/03	M.H.
1	Corrected and updated notes.	11/11/03	M.H.
2	ADDED SCREWS & CHNGD. INSET DRAWING.	1/20/04	M.H.

- 8.) Securely affix the Top Channel to existing steel structures, Starter Angles and/or Rollup Frames so that the top of the channel is 1/2" higher than the specified hallway system height. Ensure that the channel remains level, to avoid ill-fitting corrugated or flush wall panels.
- 9.) Install wall panels vertically into Floor Channel and Top Channel as recommended. Level before
 - a. For corrugated panel, secure with 3 screws at the top and bottom—total fasteners being 6 per sheet. (See drawing A-900-005-0006 for detailed instructions and illustrations of Channel installation.
 - b. For flush panels, secure with 2 screws at the top and bottom—total fasteners being 4 per sheet. (See drawing A-900-005-0006 for detailed instructions & illustration of
- 10.) Refer to drawing A-900-005-0003 for Filler Panel installation if applicable.
- 11.) Refer to drawing A-900-005-0013 for Flush Header installation if applicable.
- 12.) Refer to drawing A-900-005-0002 for Rollup Door installation.
- 13.) Refer to drawing A-900-005-0004 for Swing Door installation.
- 14.) Refer to drawing A-900-005-0012 for Locker Floor and Locker Door installation.
- 15.) Refer to drawing A-900-005-0009, A-900-005-0010 & A-900-005-0011 for Soffit installation, if applicable.
- 16.) Mid-Span Bracing is recommended over 8' 6" tall corrugated walls only.
- 17.) Affix Kick Plates and Corner Guards upon completion of the Hallway System.
- 18.) Install "Mo-Caps" on the back of ALL exposed screws.



ENLARGED VIEW
SCALE: 2 Times
TEKS SCREWS MUST PENETRATE BOTH THE BOTTOM CHANNEL AND THE DOOR GUIDES FOR PROPER MOUNTING.



Corrugated Hallway System

JANUS INTERNATIONAL CORPORATION 134 East Luke Road Temple, Georgia 30179-4435 Phone (770) 562-2580 Fax (770) 562-2264 Web Address: WWW.JANUSINTL.COM <small>© 2002 Janus International Corporation All Rights Reserved</small>				
TITLE: Corrugated Hallway System Unit Illustration				
DESIGNED: Becky Nelson	DATE: May 20, 2002			
DRAWN: Jeff Davis	DATE: July 16, 2003			
CHECKED: Pat Nesbitt	DATE: July 16, 2003			
APPROVED: Morgan Hodges	DATE: July 16, 2003			
SIZE: A	DRAWING NUMBER: -900-005-0008	REV: 2		
SCALE: NONE	SHEET: 1	OF: 1		