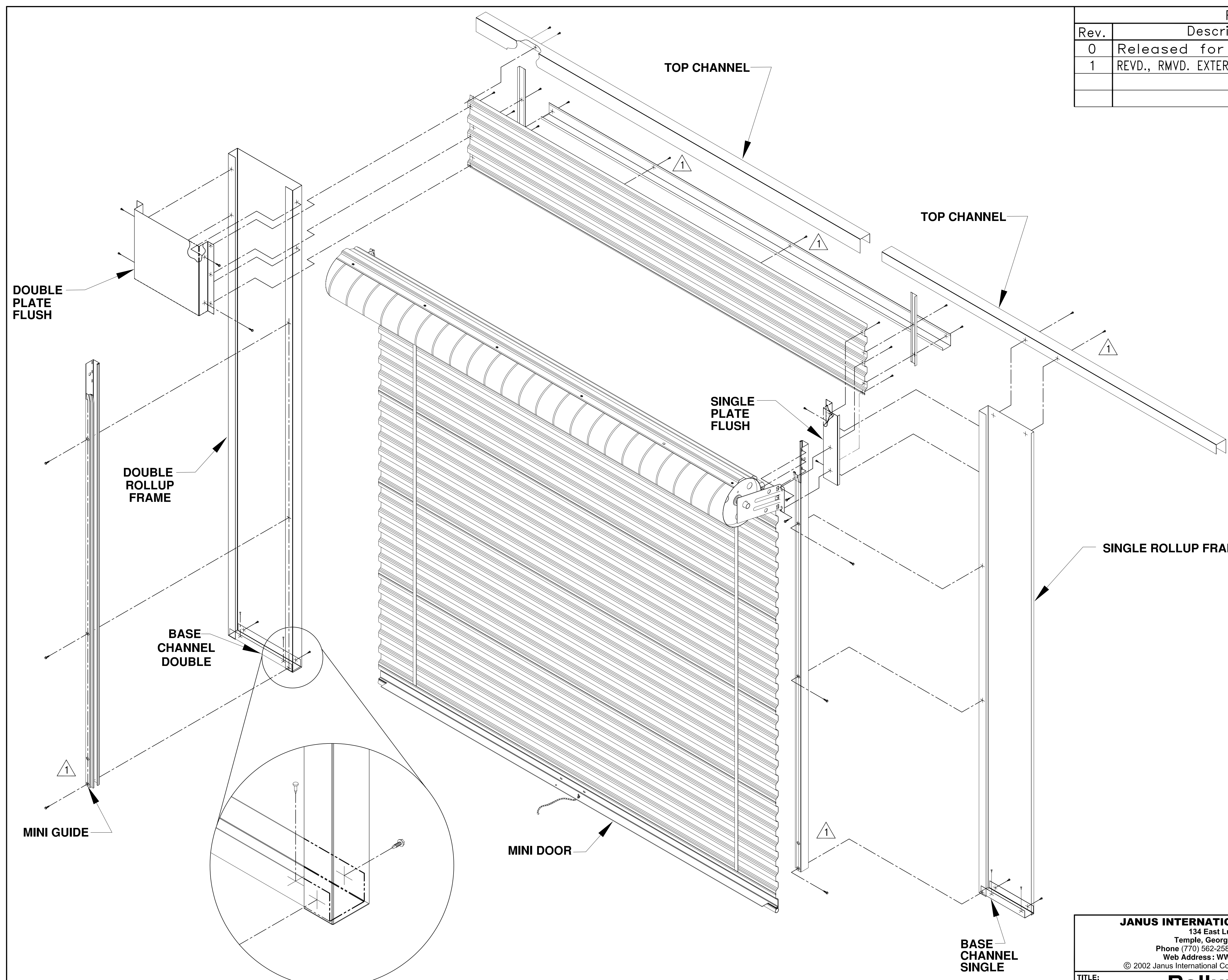
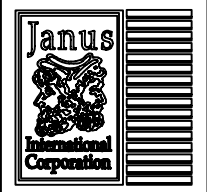


| Revisions | | | |
|-----------|------------------------------------|---------|--------|
| Rev. | Description | Date | APRVD. |
| 0 | Released for distribution. | 7/15/03 | B.B. |
| 1 | REVD., RMVD. EXTERIOR TEKS SCREWS. | 1/13/04 | M.H. |
| | | | |



Rollup Door/Filler Panel Unit

| | | |
|--|--------------------------------------|---|
| JANUS INTERNATIONAL CORPORATION 134 East Luke Road Temple, Georgia 30179-4435 Phone (770) 562-2580 Fax (770) 562-2264 Web Address: WWW.JANUSINTL.COM <small>© 2002 Janus International Corporation All Rights Reserved</small> | |  |
| TITLE: Rollup Door with a Filler Panel Unit Illustration | | |
| DESIGNED: Bert Brown | DATE: July 14, 2003 | |
| DRAWN: Jeff Davis | DATE: July 14, 2003 | |
| CHECKED: Morgan Hodges | DATE: July 15, 2003 | |
| APPROVED: Bert Brown | DATE: July 15, 2003 | |
| SIZE: A | DRAWING NUMBER: -900-005-0003 | REV: 1 |
| SCALE: 1:? | SHEET: 1 | OF: 1 |