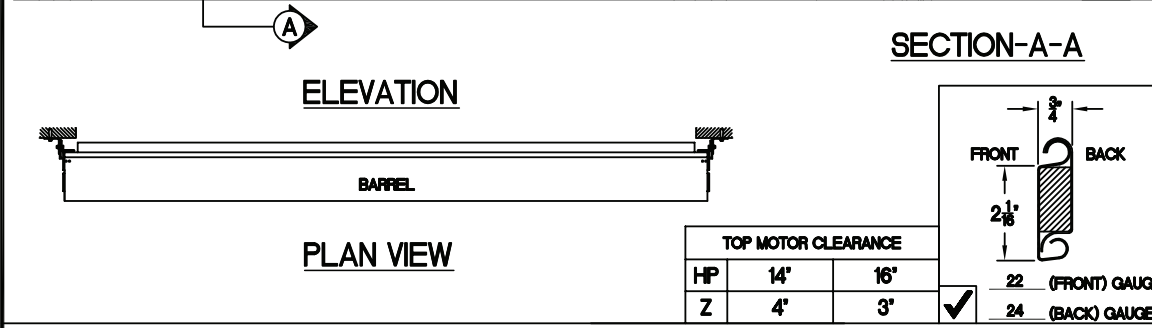


**GUIDE DIMENSIONS**

| GUIDE TYPE | A      | B      | C      | D      | E        | F      | G      |
|------------|--------|--------|--------|--------|----------|--------|--------|
| 2          | 2 5/8" | 3 7/8" | 5 1/8" | 1 1/4" | 2 13/16" | 4"     | 1 1/4" |
| 3          | 2 5/8" | 4 3/4" | 5 5/8" | 1 1/4" | 2 13/16" | 4 3/8" | 1 1/4" |
| 4          | 2 5/8" | 4 3/4" | 5 5/8" | 1 1/4" | 2 7/8"   | 4 3/4" | 1 1/4" |
| 2(W/L)     | 3"     | 4 1/4" | 5 1/2" | 1 5/8" | 3 3/16"  | 4"     | 1 1/2" |
| 3(W/L)     | 3"     | 5 1/8" | 6"     | 1 5/8" | 3 3/16"  | 4 3/8" | 1 1/2" |
| 4(W/L)     | 3"     | 5 1/8" | 6"     | 1 5/8" | 3 1/4"   | 4 3/4" | 1 1/2" |
| 5(W/L)     | 3"     | 5 1/8" | 6"     | 1 5/8" | 3 1/4"   | 4 3/4" | 1 1/2" |
| 6(W/L)     | 5 1/4" | 6 1/2" | 7 3/4" | 1 5/8" | 4 7/8"   | 7 1/4" | 1 1/2" |

- GENERAL NOTES**
- SLATS/HOOD:** SELECT FINISH OPTION BELOW (HOOD INCLUDES WEATHER BAFFLE)
- GRAY POLYESTER TOP COAT
  - WHITE POLYESTER TOP COAT
- OTHER SURFACES:**
- SHOP COAT BLACK PRIMER
- OPERATION:**
- RIGHT HAND SHOWN, LEFT HAND OPPOSITE
- GUIDES:**
- STRUCTURAL STEEL ANGLES OF 3/16" MINIMUM THICKNESS
  - WITH PVC WEATHER SEAL
- BOTTOM BAR:**
- TWO 2"x2"x1/8" STEEL ANGLES WITH PVC BULB ASTRAGAL



**NOTE: ADD 'Z' TO 'X' TO ACHIEVE OVERALL HEADROOM REQUIREMENTS**

| MPK. | QTY. | OPENING SIZE |            | OPERATION | R.H. | CLEARANCES |        | OPTION |
|------|------|--------------|------------|-----------|------|------------|--------|--------|
|      |      | WIDTH 'W'    | HEIGHT 'H' |           |      | L.H.       | 'X'+2' |        |
|      |      |              |            |           |      |            |        |        |
|      |      |              |            |           |      |            |        |        |
|      |      |              |            |           |      |            |        |        |
|      |      |              |            |           |      |            |        |        |

**PROJECT:** \_\_\_\_\_

**ARCHITECT:** \_\_\_\_\_

**CONTRACTOR:** \_\_\_\_\_

**DISTRIBUTOR:** \_\_\_\_\_

**DATE:** \_\_\_\_\_ **SHEET:** \_\_\_\_\_ **OF:** \_\_\_\_\_ **BY:** \_\_\_\_\_ **REF.#:** \_\_\_\_\_

**Model 622-INSULATED-FACE OF WALL (H MOTOR)**

Janus International Group is not responsible for the use of improper installation procedures, structural supports as well as field inspection prior to manufacturing and installation.

**APPROVAL SIGNATURE:** \_\_\_\_\_ **DATE:** \_\_\_\_\_

